

Spanners



STAHLWILLE spanners

Strong, extremely tough and durable.

Conventional spanners

- When force is applied to a spanner, the greatest force acts on the joint between the jaw and the shaft. Standard-quality open-jaw spanners do not take this fact into consideration. In the context of normal hard work, this can lead to the tool breaking, causing considerable personal injury.

STAHLWILLE spanners

- To reduce the danger of breakage, we add more material where the greatest loads are to be found and take it away from the places that are not under such stress. In this way, we are able to manufacture extremely sturdy, slim and light tools which also facilitate working in confined spaces due to their compact designs.

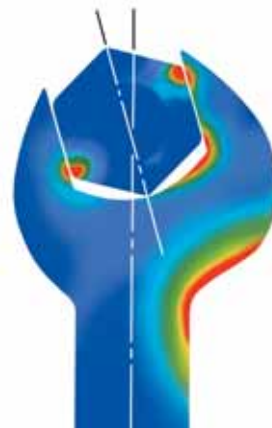
Extremely hard-wearing. Unusually durable.

- High-grade special steels, whose constitution has been carefully matched to the intended application, are drop forged.
- In a continuous furnace they are then hardened in a way that prevents scale build-up and skin decarburisation. This prevents the damaging softened skin effect and ensures the tool retains its full strength.

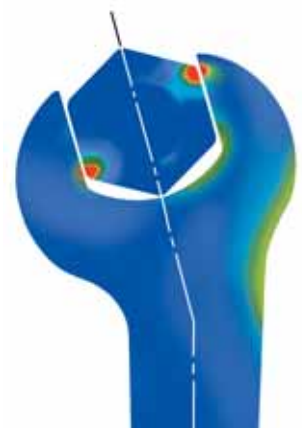


Open-jaw spanners in oil

- Quenching is in oil. This prevents stresses and deformation. The positive effect is that the tolerances in the vicinity of the jaws are very close, efficiently preventing the spanner slipping off the head or jamming in daily use.
- STAHLWILLE's Quality Assurance System applies defined checks to guarantee reliable, uniform levels of quality in spanners.



Load zones in standard-quality spanners



Load zones in spanners by STAHLWILLE

Concentrated force

- STAHLWILLE spanners have been designed in such a way that they can be subjected to greater loads than the screws you tighten or loosen with them.
- Intelligent material distribution puts the steel in places most subject to loads and this, in conjunction with higher grades of steel, makes it possible to produce far thinner rings than usual. As a result, the enduser can take full advantage of STAHLWILLE quality spanners even in awkward spaces.

- The reduction in material used in the central section leads to a noticeable weight-saving. At the same time, the large contact surfaces ensure the best possible grip.
- STAHLWILLE's rounded finish gives the smooth finishing touches to the tool surface making it skin-friendly and easy to hold. Endusers cannot injure themselves on any sharp edges or corners.

Light but easy to handle

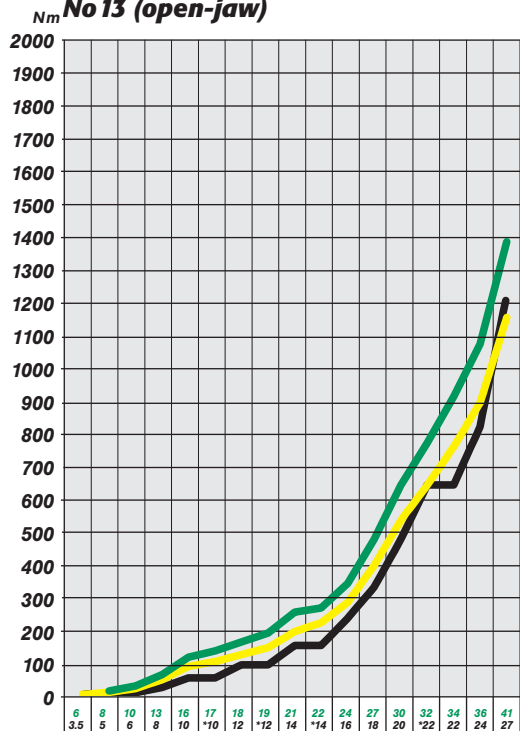
- The double-T profile typical of STAHLWILLE spanners considerably increases the shafts' resistance to bending.



Absolutely resistant to bending thanks to the double-T profile



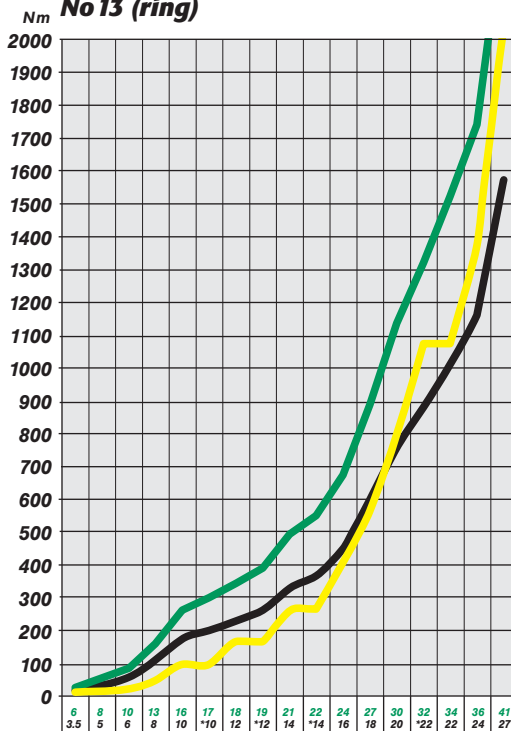
**Guaranteed test results
STAHLWILLE combination spanners
No 13 (open-jaw)**



Size/thread (M) * Reference to older screw thread standards

- Test results for STAHLWILLE
- Test results to DIN 899 or ISO 1711
- Clamping torque for 8.8 screws at 100% tensile yield strength ($\mu = 0.14$)

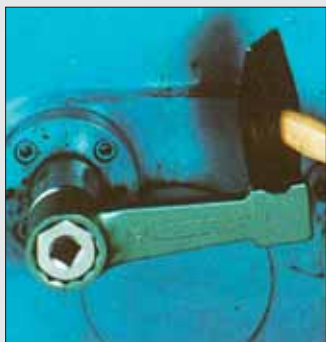
**Guaranteed test results
STAHLWILLE combination spanners
No 13 (ring)**



- Test results for STAHLWILLE
- Test results to DIN 899 or ISO 1711
- Clamping torque for 12.9 screws at 100% tensile yield strength ($\mu = 0.14$)



This one - and the next one: tailored to fit
STAHLWILLE spanners are continuously tested for accurate sizing.



STAHLWILLE No 8 striking face double hex box-spanners are tougher, thinner and higher.

Key benefits when tightening and loosening screws.

- Tougher than any screw thanks to the forged double hex.
- Thinner than conventional rings - facilitating work in confined spaces.
- Higher than standard nuts - prevents the spanner jamming on the nut.

Quality assured

Strictly defined test procedures at every production stage ensure that the prescribed quality standards are achieved.

STAHLWILLE's Quality Assurance System was awarded an internationally recognised certificate in accordance with DIN ISO 9001 by the DQS (German Association for the Certification of Quality Assurance Systems).

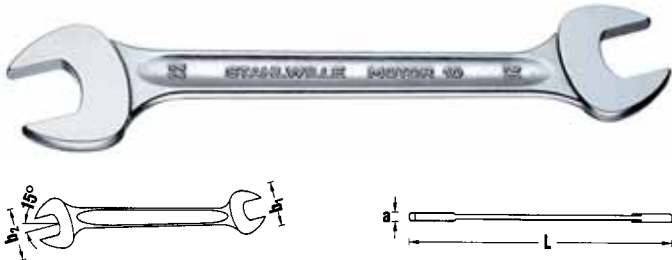
This one - and the next one: perfect chrome plating

After being correctly pre-treated, the tool is nickel plated and chrome plated. No chance of the coatings peeling off here even under tough conditions.



10 Double open ended spanners

DIN 3110, ISO 10102 (metric sizes), Chrome Alloy Steel, chrome plated.



Code	mm	L mm	b ₁ mm	b ₂ mm	a mm	ΔΔ g	
40030405	4 x 5	100	12.5	14	3.4	11	10
40035507	5.5 x 7	120	14.8	17	3.7	19	10
40030607	6 x 7	120	15.5	17	3.7	17	10
40030708	7 x 8	140	17	18	4.0	25	10
40030809	8 x 9	140	18	21	4.0	21	10
40030810	8 x 10	140	18	23	4.5	33	10
40031011	10 x 11	155	23	26	4.8	40	10
40031012	10 x 12	170	23	28	5.3	51	10
40031013	10 x 13	170	23	30	5.3	57	10
40031113	11 x 13	170	26	30	5.3	55	10
40031213	12 x 13	170	28	30	5.3	64	10
40031214	12 x 14	170	28	32	5.3	63	10
40031314	13 x 14	190	30	32	5.3	70	10
40031315	13 x 15	190	30	35	5.3	73	10
40031317	13 x 17	205	30	38	5.8	92	10
40031415	14 x 15	190	32	35	5.3	81	10
40031417	14 x 17	205	32	38	5.8	99	10
40031617	16 x 17	205	36	38	5.8	100	10
40031618	16 x 18	220	36	40	6.7	125	10
40031719	17 x 19	220	38	42	6.7	131	10
40031819	18 x 19	220	40	42.5	6.7	147	10
40031821	18 x 21	235	40	47	7.3	170	10
40031922	19 x 22	235	42	49	7.3	179	10
40032022	20 x 22	235	45	49	7.3	185	10
40032123	21 x 23	250	47	51	7.8	225	5
40032124	21 x 24	250	47	53	7.8	215	5
40032224	22 x 24	250	49	53	7.8	232	5
40032426	24 x 26	270	53	57.5	8.3	293	5
40032427	24 x 27	280	53	60	8.3	299	5
40032528	25 x 28	285	55	62	8.3	309	5
40032730	27 x 30	300	60	66	9.4	412	5
40032732	27 x 32	300	60	70	9.4	418	5
40033032	30 x 32	300	66	70	9.4	451	5
40033034	30 x 34	300	66	75	9.4	480	5
40033236	32 x 36	325	70	80	10	546	5
40033436	34 x 36	325	75	80	10	619	1
40033641	36 x 41	375	80	88	11	800	1
40034146	41 x 46	425	88	94.5	12	1030	1



10a Double open ended spanners

Code	mm	L mm	b ₁ mm	b ₂ mm	a mm	ΔΔ g	
40431620	1/4 x 5/16	140	16	18	4	21	10
40432024	5/16 x 3/8	140	18	23	4.5	34	10
40432428	3/8 x 7/16	155	23	26	4.8	48	10
40432832	7/16 x 1/2	170	26	30	5.3	58	10
40433234	1/2 x 9/16	190	30	32	5.3	73	10
40433436	9/16 x 5/8	205	32	36	5.8	96	10
40433538	19/32 x 11/16	205	35	40	5.8	105	10
40433638	5/8 x 11/16	205	36	40	5.8	101	10
40433640	5/8 x 3/4	220	36	42	6.7	135	10
40433840	11/16 x 3/4	220	40	42	6.7	135	10
40433842	11/16 x 13/16	235	40	47	7.3	167	10
40434044	3/4 x 7/8	235	42	49	7.3	177	10
40434142	25/32 x 13/16	235	45	47	7.3	190	10
40434446	7/8 x 15/16	250	49	53	7.8	235	10
40434648	15/16 x 1	270	53	55	8.3	303	5
40435258	1 1/8 x 1 5/16	300	64	75	9.4	502	5



Sets: Double open ended spanners

Code	No	Content mm/"	ΔΔ g
96400305	10/8	6 x 7; 8 x 9; 10 x 11; 12 x 13; 14 x 15; 16 x 17; 18 x 19; 20 x 22	745
96400314	10/9	6 x 7; 8 x 9; 10 x 11; 12 x 13; 14 x 15; 16 x 17; 18 x 19; 20 x 22; 21 x 24	945
96400307	10/10	6 x 7; 8 x 9; 10 x 11; 12 x 13; 14 x 15; 16 x 17; 18 x 19; 20 x 22; 24 x 27; 30 x 32	1540
96400313	10/11 ¹⁾	6 x 7; 8 x 9; 10 x 11; 12 x 13; 14 x 15; 16 x 17; 18 x 21; 19 x 22; 24 x 27; 30 x 32; 34 x 36	2149
96400306	10/12	6 x 7; 8 x 9; 10 x 11; 12 x 13; 14 x 15; 16 x 17; 18 x 19; 20 x 22; 21 x 23; 24 x 27; 25 x 28; 30 x 32	2125
96404306	10a/7	1/4 x 5/16; 3/8 x 7/16; 1/2 x 9/16; 5/8 x 3/4; 11/16 x 13/16; 7/8 x 15/16; 1 1/8 x 1 5/16	1242
96404307	10a/11	1/4 x 5/16; 3/8 x 7/16; 1/2 x 9/16; 5/8 x 3/4; 19/32 x 11/16; 5/8 x 3/4; 11/16 x 13/16; 3/4 x 7/8; 25/32 x 13/16; 7/8 x 15/16; 1 1/8 x 1 5/16	1870

Standard packing: clear view wallet.

¹⁾ in convenient clip holder

TCS 10a/9



175 x 350 x 70 mm, 9 pieces

Code ΔΔ
g

96838779 1555



No 10a

sizes 1/4 x 5/16; 3/8 x 7/16; 1/2 x 9/16;
19/32 x 11/16; 5/8 x 3/4; 3/4 x 7/8; 25/32 x 13/16;
15/16 x 1; 1 1/8 x 1 5/16"

Plastic-wallets for sets of spanners

Code	wallet No	for set No	ΔΔ
			g
83400306	010/12	10/12*, 10a/11*	276
83404601	012/10	12/10 Pc	41
83400601	012/15	12/15 Pc, 12a/13 Pc	68
83410704	023/8	23/8*	123

* Plastic-wallets must be ordered separately!

Clip holder for sets of spanners



Code	Clip holder No	for set No	ΔΔ	
			g	
83400311	010/11KH*	10/11	99	1
83400806	013/6KH*	13/6	40	1

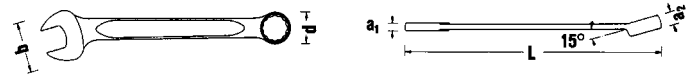
* to be discontinued

13

Combination spanners OPEN-BOX

AS-drive

DIN 3113 form A/ISO 7738 form A (metric sizes),
Chrome Alloy Steel, chrome plated.



Code	mm	L mm	b mm	d mm	a ₁ mm	a ₂ mm	ΔΔ	
							g	
40085500	5.5	100	14.8	9.2	3.5	5.8	13	10
40080606	6	105	15.5	9.9	3.6	6	15	10
40080707	7	110	17	11.3	3.9	6	20	10
40080808	8	115	18	12.4	4.2	7	21	10
40080909	9	120	21	13.4	4.5	7	27	10
40081010	10	125	23	14.8	4.8	7	35	10
40081111	11	135	26	16.4	4.8	8	43	10
40081212	12	140	28	17.8	5.3	8.5	46	10
40081313	13	160	30	19.1	5.3	8.5	57	10
40081414	14	165	32	20.6	5.3	8.5	68	10
40081515	15	170	35	21.9	5.3	8.5	73	10
40081616	16	180	36	23.2	5.8	10	89	10
40081717	17	190	38	24.6	5.8	10	99	10
40081818	18	200	40	26	6.7	11.5	126	10
40081919	19	230	42	27.5	6.7	11.5	142	10
40082020	20	230	45	29	7	13	176	10
40082121	21	260	47	30.3	7.3	13	216	10
40082222	22	260	49	31.8	7.3	13	220	10
40082323	23	280	53	33.5	7.8	14	251	5
40082424	24	280	53	34.9	7.8	14	254	5
40082525	25	300	55	36.3	8.4	14.5	281	5
40082626	26	300	57.5	37.8	8.4	14.5	315	5
40082727	27	300	60	39.2	8.4	14.5	345	5
40082828	28	320	62	40.6	8.4	14.5	368	5
40082929	29	330	64	41.9	8.9	16	420	5
40083030	30	330	66	43.2	8.9	16	404	5
40083232	32	360	70	45.8	9.4	16.5	484	5
40083434	34	450	80	48	9.4	17	683	1
40083636	36	460	88	50.8	10	18	787	1
40083838	38	480	87	53.6	11	19	915	1
40084141	41	480	88	57.8	11	19	1055	1
40084646	46	500	94.5	65.2	13	20	1352	1
40085050	50	530	103	73	14	21	1700	1
40085555	55	560	114	81	15	22	2193	1
40086060	60	590	125	89.8	16	24	2925	1

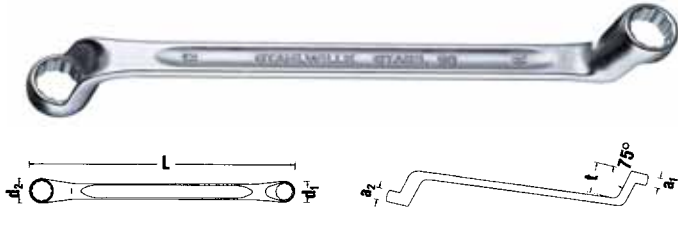


20 Double ended ring spanners

AS-drive

StahlwilleSTABIL®

offset, DIN 838/ISO 10104 (metric sizes),
Chrome Alloy Steel, chrome plated.



Code	Size mm	L mm	d ₁ mm	d ₂ mm	a ₁ mm	a ₂ mm	t mm	Weight g	Box
41040607	6 x 7	165	10.5	11.8	6	7	18	46	10
41040809	8 x 9	180	13.1	14.5	7	8	20	62	10
41040810	8 x 10	180	13.1	15.8	7	9	21	61	10
41041011	10 x 11	200	15.8	17.2	9	9	23	93	10
41041013	10 x 13	220	15.8	20	9	10	25	122	10
41041213	12 x 13	220	18.6	20	9	10	25	126	10
41041317	13 x 17	245	20	25.3	10	12	27	169	10
41041415	14 x 15	245	21.3	22.6	10	12	27	163	10
41041617	16 x 17	255	23.9	25.3	11	12	27	181	10
41041719	17 x 19	270	25.3	28	12	13	29	220	10
41041819	18 x 19	275	26.6	28	12	13	29	228	10
41041821	18 x 21	300	26.6	30.7	12	13	31	279	10
41041922	19 x 22	300	28	32.1	13	14	31	315	10
41042022	20 x 22	300	29.4	32.1	13	14	31	317	5
41042123	21 x 23	315	30.7	33.4	13	14	31	312	5
41042124	21 x 24	330	30.7	34.7	13	14	34	384	5
41042224	22 x 24	330	32.1	34.7	14	14	34	368	5
41042426	24 x 26	330	34.7	37.3	14	15	34	427	5
41042427	24 x 27	330	34.7	38.6	14	15	34	447	5
41042528	25 x 28	350	36	40	14	15	34	414	5
41042730	27 x 30	360	38.3	42.6	15	15	37	595	5
41042732	27 x 32	360	39.3	42.2	15	16	37	596	5
41043032	30 x 32	365	42.6	45.4	15	16	37	603	5
41043034	30 x 34	365	42.6	48	15	16	37	670	1
41043641	36 x 41	440	53	60	17	18	40	1063	1
41044650	46 x 50	535	65.2	73	19	20	45	1709	1

20a Double ended ring spanners

Code	Size "	L mm	d ₁ mm	d ₂ mm	a ₁ mm	a ₂ mm	t mm	Weight g	Box
41441620	1/4 x 5/16	180	11.8	13.1	7	7	20	61	10
41442428	3/8 x 7/16	200	15.8	17.2	9	9	23	88	10
41443234	1/2 x 9/16	220	20	21.3	9	10	25	131	10
41443436	5/16 x 5/8	245	21.3	25.3	10	12	27	168	10
41443538	19/32 x 11/16	255	23.9	25.3	11	12	27	177	10
41443640	5/8 x 3/4	270	23.9	28	12	13	29	235	10
41443842	11/16 x 13/16	300	25.3	30.7	12	13	31	280	5
41444044	3/4 x 7/8	300	28	32.1	13	14	31	299	5
41444142	25/32 x 13/16	300	29.4	32.1	13	14	31	333	5
41444446	7/8 x 15/16	330	32.1	34.7	14	14	34	363	5
41444648	15/16 x 1	330	34.7	37.3	14	15	34	419	5
41445258	1 1/8 x 1 5/16	365	42.6	45.4	15	16	37	581	1



Sets: Double ended ring spanners

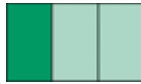
StahlwilleSTABIL®

offset.

Code	No	Content mm/"	Weight g
96410408	20/7N	6 x 7; 8 x 9; 10 x 11; 12 x 13; 14 x 15; 16 x 17; 18 x 19	930
96410405	20/8	6 x 7; 8 x 9; 10 x 11; 12 x 13; 14 x 15; 16 x 17; 18 x 19; 20 x 22	1291
96410409	20/9	6 x 7; 8 x 9; 10 x 11; 12 x 13; 14 x 15; 16 x 17; 18 x 19; 20 x 22; 21 x 24	1650
96410407	20/10	6 x 7; 8 x 9; 10 x 11; 12 x 13; 14 x 15; 16 x 17; 18 x 19; 20 x 22; 24 x 27; 30 x 32	2331
96410406	20/12	6 x 7; 8 x 9; 10 x 11; 12 x 13; 14 x 15; 16 x 17; 18 x 19; 20 x 22; 21 x 23; 24 x 27; 25 x 28; 30 x 32	3137
96414402	20a/6	1/4 x 5/16; 3/8 x 7/16; 1/2 x 9/16; 5/8 x 3/4; 11/16 x 13/16; 7/8 x 15/16	1244
96414405	20a/10	1/4 x 5/16; 3/8 x 7/16; 1/2 x 9/16; 5/8 x 3/4; 11/16 x 13/16; 7/8 x 15/16; 1 1/8 x 1 5/16	2260

Standard packing: carton. (Coloured plastic-wallets: page 68)

ES 20/8, 6x7-19x22 mm



175 x 350 x 30 mm, 8 pieces

Code	Weight g
96838167	1266
No 20	sizes 6 x 7; 8 x 9; 10 x 11; 12 x 13; 14 x 15; 16 x 17; 18 x 21; 19 x 22 mm
83812083	Empty tray 103

ES 20/10, 6x7-30x32 mm



530 x 350 x 44 mm, 10 pieces

Code	Weight g
96838107	2620
No 20	sizes 6 x 7; 8 x 9; 10 x 11; 12 x 13; 14 x 15; 16 x 17; 18 x 19; 20 x 22; 24 x 27; 30 x 32 mm
83812044	Empty tray 309

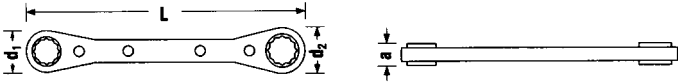
STAHLOWILLE

Official partner of
BMW Motorrad Motorsport

25 Ratchet ring spanners

AS-drive

with bi-hexagon, straight, chrome plated.



Code	Size mm	L mm	d ₁ mm	d ₂ mm	a mm	ΔΔ g	
41 13 07 08	7 x 8	109	15	17	9	55	1
41 13 09 10	9 x 10	139	20	23	9	80	1
41 13 10 11	10 x 11	170	26	30	12	144	1
41 13 12 13	12 x 13	170	26	30	12	135	1
41 13 14 15	14 x 15	170	26	30	12	126	1
41 13 16 18	16 x 18	205	33	36	12	196	1
41 13 17 19	17 x 19	205	33	36	12	188	1

25aN Ratchet ring spanners

as No 25, but made of solid steel, Fed. Spec. GGG-W-001405.



Code	Size "	L mm	d ₁ mm	d ₂ mm	a mm	ΔΔ g	
41 56 16 20	1/4 x 5/16	109	15	17	9	65	1
41 56 20 22	5/16 x 11/32	109	15	17	9	60	1
41 56 24 28	3/8 x 7/16	139	20	23	9	90	1
41 56 32 34	1/2 x 9/16	174	26	30	12	164	1
41 56 36 38	5/8 x 11/16	205	33	36	12	257	1
41 56 40 44	3/4 x 7/8	235	36	40	13	296	1
41 56 42 46	13/16 x 15/16	235	36	40	12	281	1

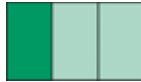


Sets: Ratchet ring spanners

Code	No	Content mm/"	ΔΔ g
96 41 13 02	25/4	9 x 10; 12 x 13; 14 x 15; 17 x 19	556
96 41 13 01	25/7Pc	7 x 8; 9 x 10; 10 x 11; 12 x 13; 14 x 15; 16 x 18; 17 x 19	1049
96 41 56 02	25a/4N	3/8 x 7/16; 1/2 x 9/16; 5/8 x 11/16; 3/4 x 7/8	1000
96 41 56 01	25a/7PcN	1/4 x 5/16; 5/16 x 11/32; 3/8 x 7/16; 1/2 x 9/16; 5/8 x 11/16; 3/4 x 7/8; 13/16 x 15/16	1271

Standard packing: clear view wallet.
Pc: in green plastic-wallet.

ES 25/7, 7x8–17x19 mm



175 x 350 x 30 mm, 7 pieces

Code	ΔΔ g
96 83 81 08	1040
No 25	sizes 7 x 8; 9 x 10; 10 x 11; 12 x 13; 14 x 15; 16 x 18; 17 x 19 mm
83 81 20 38	Empty tray 111

TCS 25/7

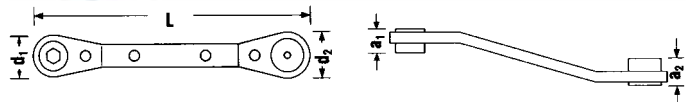


175 x 350 x 30 mm, 7 pieces

Code	ΔΔ g
96 83 87 51	984
No 25	sizes 7 x 8; 9 x 10; 10 x 11; 12 x 13; 14 x 15; 16 x 18; 17 x 19 mm

25B Ratcheting bit holder

for hexagon bits, magnetic location, reversible heads angled, chrome plated.

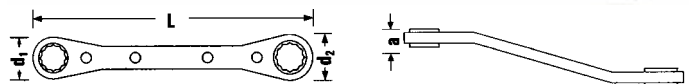


Code	inside "	L mm	d ₁ mm	d ₂ mm	a ₁ mm	a ₂ mm	ΔΔ g	
41 54 16 20	1/4 x 5/16	138	20	23	15	17	105	1

26a Ratchet ring spanners

AS-drive

reversible, with bi-hexagon, angled, chrome plated.



Code	Size "	L mm	d ₁ mm	d ₂ mm	a mm	ΔΔ g	
41 55 16 20	1/4 x 5/16	109	15	17	9	55	1
41 55 24 28	3/8 x 7/16	139	20	23	9	80	1
41 55 32 34	1/2 x 9/16	170	26	30	12	126	1

And certified to DIN EN ISO 9001

After STAHLWILLE was certified,
as one of the very first companies back in 1990,
to DIN EN ISO 9002, our Quality Assurance System
was also certified to DIN EN ISO 9001 in 1992.

