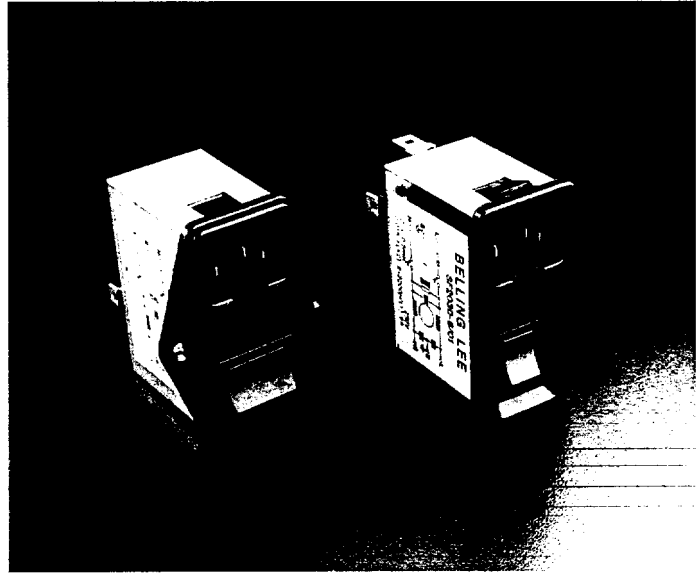
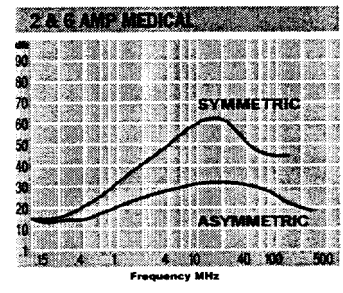
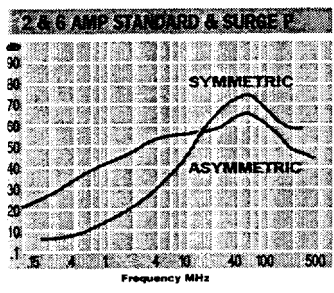


-557-638/640

**Belling Lee**

**SF 2030**  
**SF 2032**

IEC INLET WITH INTEGRAL DOUBLE POLE SWITCH AND SINGLE OR DOUBLE FUSEHOLDER STANDARD, MEDICAL & SURGE PROTECTED VERSIONS AVAILABLE



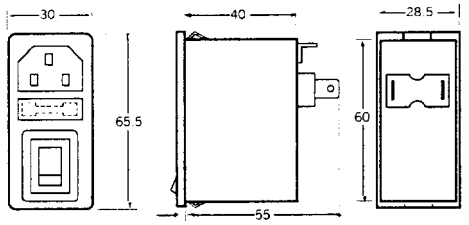
SF 2030 SF 2032	Rated Current A	Leakage Current @ 250V 50Hz	Inductance mH	Connections Input Output	Resistor Value	Number of Fuses	Mounting	Approvals UL IEC SF
<b>Standard Version</b>								
SF 2030-2/01	2	0.2mA	2.0	IEC 320 6.3 x 0.8 Faston	1MΩ	1	Snap-in	<input type="checkbox"/> <input type="checkbox"/> <input type="checkbox"/>
SF 2032-2/01	2	0.2mA	2.0	IEC 320 6.3 x 0.8 Faston	1MΩ	2	Screw Mount	<input type="checkbox"/> <input type="checkbox"/> <input type="checkbox"/>
SF 2030-6/01	6	0.2mA	0.5	IEC 320 6.3 x 0.8 Faston	1MΩ	1	Snap-in	<input type="checkbox"/> <input type="checkbox"/> <input type="checkbox"/>
SF 2032-6/01	6	0.2mA	0.5	IEC 320 6.3 x 0.8 Faston	1MΩ	2	Screw Mount	<input type="checkbox"/> <input type="checkbox"/> <input type="checkbox"/>
<b>Medical Version</b>								
SF 2030M-2/01	2	5μA	2.0	IEC 320 6.3 x 0.8 Faston	1MΩ	1	Snap-in	<input type="checkbox"/> <input type="checkbox"/> <input type="checkbox"/>
SF 2032M-2/01	2	5μA	2.0	IEC 320 6.3 x 0.8 Faston	1MΩ	2	Screw Mount	<input type="checkbox"/> <input type="checkbox"/> <input type="checkbox"/>
SF 2030M-6/01	6	5μA	0.5	IEC 320 6.3 x 0.8 Faston	1MΩ	1	Snap-in	<input type="checkbox"/> <input type="checkbox"/> <input type="checkbox"/>
SF 2032M-6/01	6	5μA	0.5	IEC 320 6.3 x 0.8 Faston	1MΩ	2	Screw Mount	<input type="checkbox"/> <input type="checkbox"/> <input type="checkbox"/>
<b>Surge Protected Version</b>								
SF 2030Z-2/01	2	0.2mA	2.0	IEC 320 6.3 x 0.8 Faston	1MΩ	1	Snap-in	<input type="checkbox"/> <input type="checkbox"/> <input type="checkbox"/>
SF 2032Z-2/01	2	0.2mA	2.0	IEC 320 6.3 x 0.8 Faston	1MΩ	2	Screw Mount	<input type="checkbox"/> <input type="checkbox"/> <input type="checkbox"/>
SF 2030Z-6/01	6	0.2mA	0.5	IEC 320 6.3 x 0.8 Faston	1MΩ	1	Snap-in	<input type="checkbox"/> <input type="checkbox"/> <input type="checkbox"/>
SF 2032Z-6/01	6	0.2mA	0.5	IEC 320 6.3 x 0.8 Faston	1MΩ	2	Screw Mount	<input type="checkbox"/> <input type="checkbox"/> <input type="checkbox"/>

Temperature Range: -25°C to +85°C      Test Voltage: L+N to ground, 2700Vdc, 2 seconds       Approved  
 Operating Voltage: 250Vac      Operating Frequency: 0 to 400Hz       Submitted for Approval

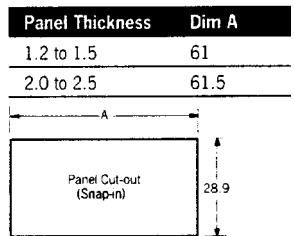
**DIMENSIONS**

All dimensions are nominal and in mm

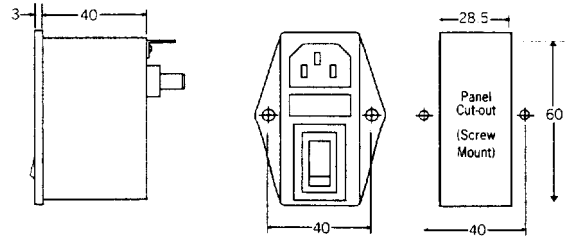
**SF 2030 (Single Fuseholder Snap-in)**



**Panel Cut-out Details**

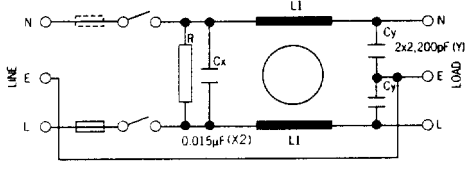


**SF 2032 (Double Fuseholder Screw Mount)**

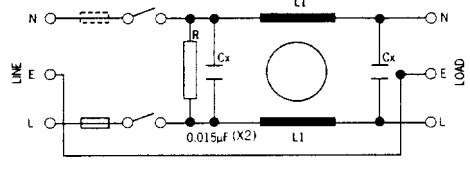


**CIRCUIT DIAGRAMS**

**Standard Version**



**Medical Version (Suffix 'M')**



**Surge Protected Version (Suffix 'Z')**

