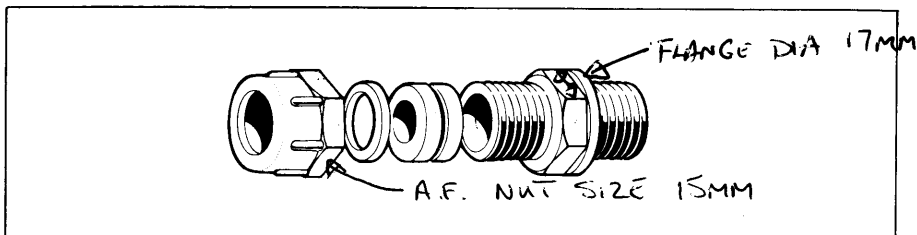


NYLON CABLE GLANDS

elkay

Miniature Range

Each gland consists of the nylon base with standard or long thread, nitrile rubber compression bush, nylon skid washer and nylon female clamping bush. The optional locknuts are nylon and the sealing washers are black vulcanised fibre.

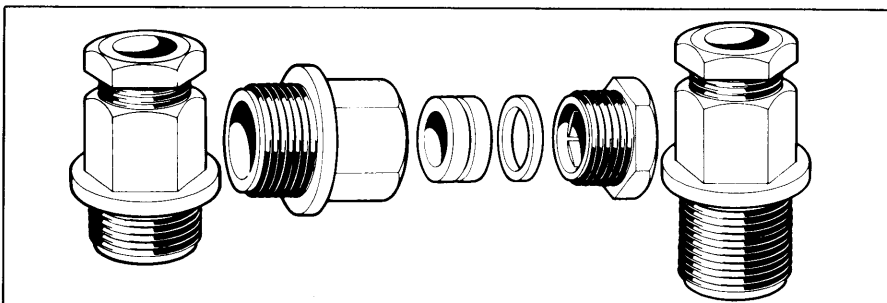


Available in **BLACK** or **WHITE**

Catalogue No.		Thread Sizes			To accommodate Cable Diameters	On Request	
Standard Thread	Long Thread	Male	Standard Length	Long Length		Locknut Cat. No.	Sealing Washer Cat. No.
238	244	M10 X 1	8.0	20.0	2.0 - 5.0	78	68
239	245	M13 X 1				79	69
240	246	M10 X 1			5.0 - 7.0	78	68
241	247	M13 X 1				79	69

Standard Range

These comprise nylon base with standard or long thread, nitrile rubber compression bush, nylon skid washer and nylon clamping bush. The optional locknuts are nylon and sealing washers are soft nylon.



Available in **BLACK** or **GREY**

Catalogue No.		Thread Sizes				To accommodate Cable Diameters	On Request		
Standard Thread	Long Thread	Male	Female	Standard Length	Long Length		Locknut Cat. No.	Sealing Washer Cat. No.	
248	256	M16	M16	10.0	20.0	4.0 - 7.0	92	96	
249	257	M20	M16	11.0			7.0 - 10.5	93	97
264	266	M25	M16	12.0				94	98
250	258	M16	M16	10.0		8.0 - 13.0		92	96
251	259	M20	M16	11.0			93	97	
265	267	M25	M16	12.0			94	98	
252	260	M20	M20	11.0		12.0 - 18.0	93	97	
253	261	M25	M20	12.0			94	98	
254	262	M25	M25	12.0			94	98	
255	263	M32	M32	13.0		18.0 - 24.5	95	99	

Available in **BLACK** only

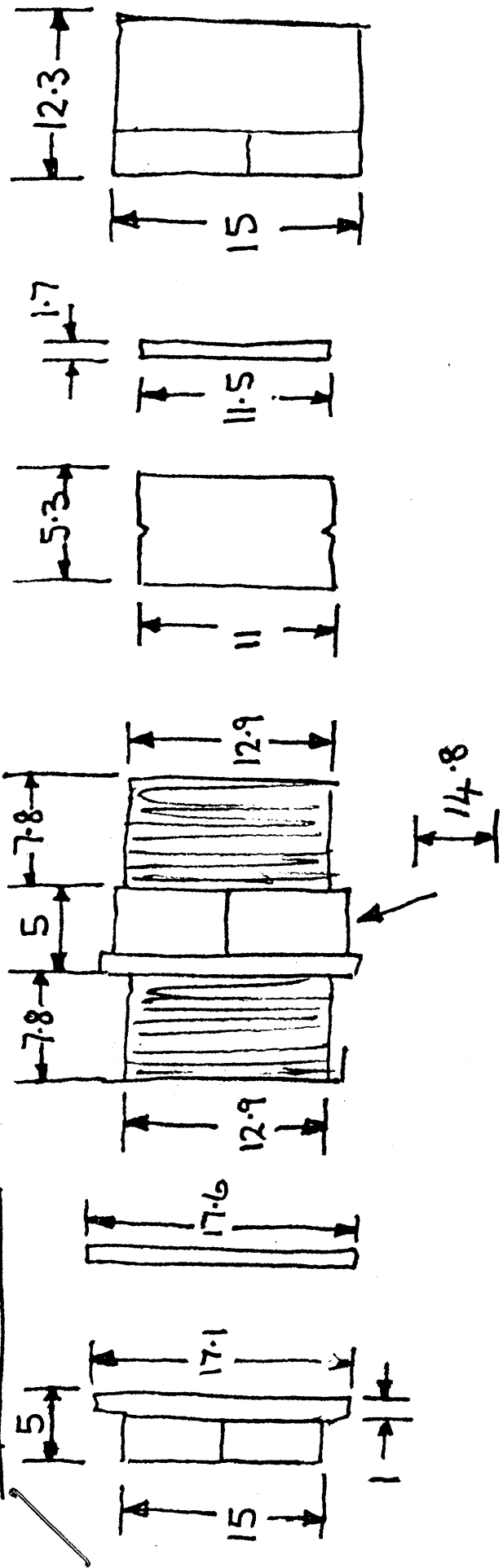
Catalogue No.	Thread	Male	Female	Standard Length	Long Length	To accommodate Cable Diameters	Locknut Cat. No.	Sealing Washer Cat. No.
280	M40	M40	M42	20.5	Not Applicable	22 - 27	111	121
281	M40	M40	M42	20.5		27 - 30	111	121
282	M50	M50	M55	24.0		28 - 32	112	122
283	M50	M50	M55	24.0		31 - 35	112	122
284	M50	M50	M55	24.0		35 - 38	112	122
285	M50	M50	M55	24.0		38 - 41	112	122
286	M63	M63	M68	27.0		39 - 43	113	123
287	M63	M63	M68	27.0		43 - 47	113	123
288	M63	M63	M68	27.0		46 - 50	113	123
289	M63	M63	M68	27.0		50 - 53	113	123

PG Range

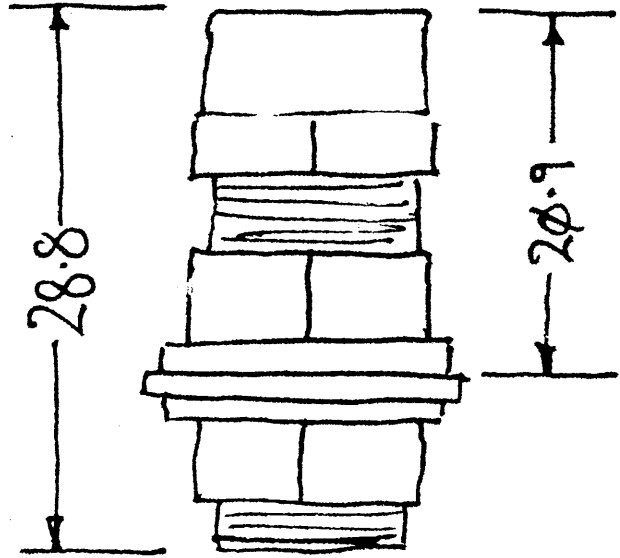
Available in **BLACK** only

Catalogue No.	Thread	Male	Female	Standard Length	Long Length	To accommodate Cable Diameters	Locknut Cat. No.	Sealing Washer Cat. No.
1587	PG11	3/8" BSP	8.0	Not Applicable	4.0 - 7.0	316	These optional locknuts are moulded in GREY high impact polystyrene	
1588	PG11	3/8" BSP	8.0		7.0 - 10.5	316		
1589	PG13.5	3/8" BSP	8.0		4.0 - 7.0	317		
1590	PG13.5	3/8" BSP	8.0		7.0 - 10.5	317		
1591	PG13.5	3/8" BSP	7.5		10.0 - 13.5	317		
1592	PG16	1/2" BSP	6.5		4.0 - 7.0	318		
1593	PG16	1/2" BSP	6.5		7.0 - 10.5	318		
1594	PG16	1/2" BSP	6.5		10.0 - 13.5	318		

143-607



UNCOMPRESSED



COMPRESSED WITH 7 mm CABLE

