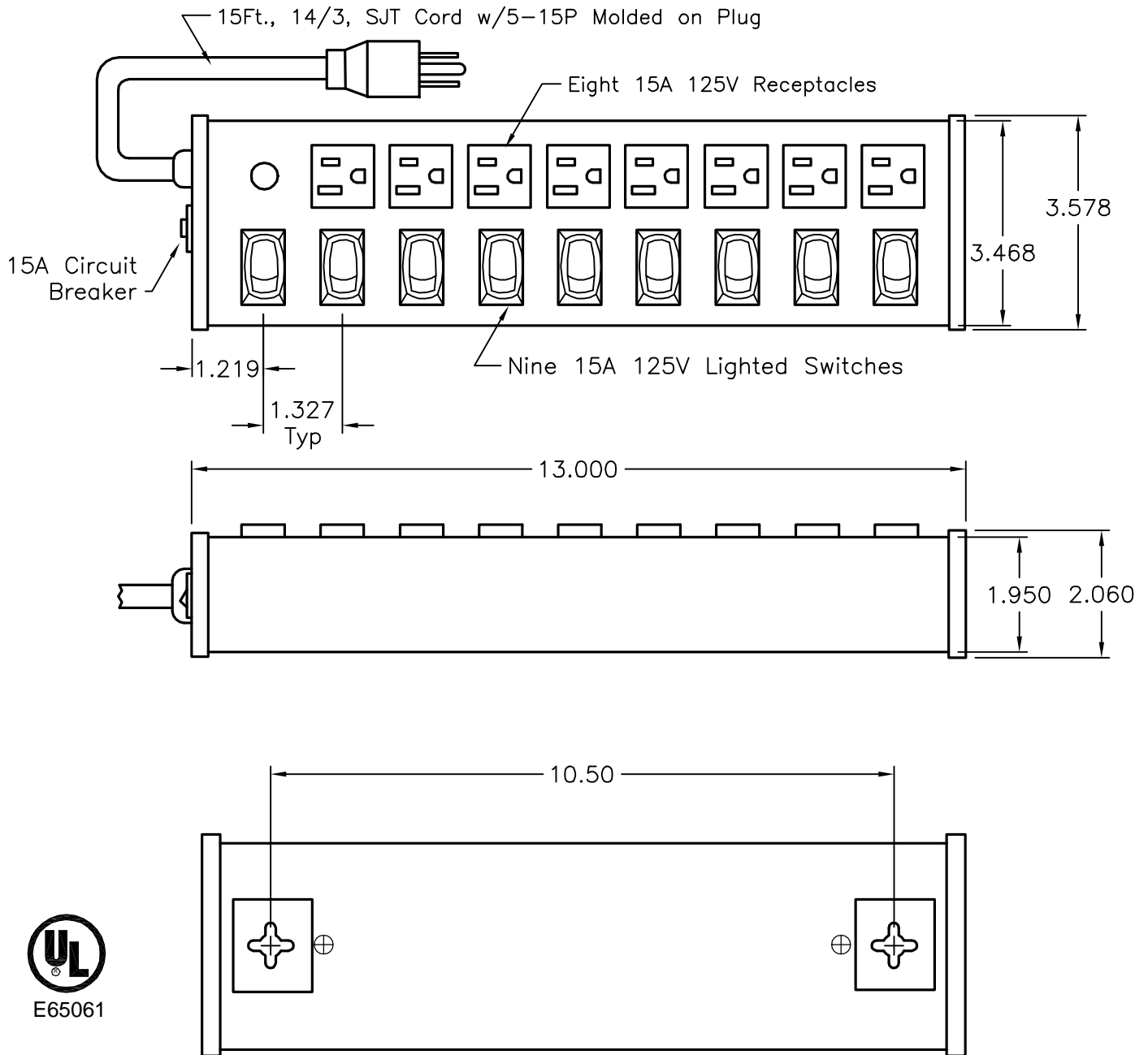


ALL RIGHTS RESERVED. NO PORTION OF THIS PUBLICATION, WHETHER IN WHOLE OR IN PART CAN BE REPRODUCED WITHOUT THE EXPRESS WRITTEN CONSENT OF SPC TECHNOLOGY.

REVISIONS			DOC. NO. SPC-F004 * Effective: 12/21/98 * DCP No: 680					
DCP #	REV	DESCRIPTION	DRAWN	DATE	CHECKD	DATE	APPRVD	DATE
1238	A	RELEASED	JWM	12/20/01	HO	12/20/01	DJC	12/20/01



SPC-F004.DWG

<small>DISCLAIMER:</small> ALL STATEMENTS AND TECHNICAL INFORMATION CONTAINED HEREIN ARE BASED UPON INFORMATION AND/OR TESTS WE BELIEVE TO BE ACCURATE AND RELIABLE. SINCE CONDITIONS OF USE ARE BEYOND OUR CONTROL, THE USER SHALL DETERMINE THE SUITABILITY OF THE PRODUCT FOR THE INTENDED USE AND ASSUME ALL RISK AND LIABILITY WHATSOEVER IN CONNECTION THEREWITH.								
Tolerances: Unless Otherwise Specified: .X = .100 .XX = ±.020 .XXX = ±.005 Fractional = ±1/64 Angles = ±1°	DRAWN BY:	DATE:	DRAWING TITLE:					
	Jeff McVicker	12/20/01	Power Strip - 8 Switched Receptacles					
	CHECKED BY:	DATE:	SIZE	DWG. NO.	ELECTRONIC FILE		REV	
	Hisham Odish	12/20/01	A	SPC11102	32C2079.dwg		A	
APPROVED BY:		DATE:	SCALE:		U.O.M.: INCHES [mm]		SHEET:	
Daniel Carey		12/20/01	NTS				1 OF 1	