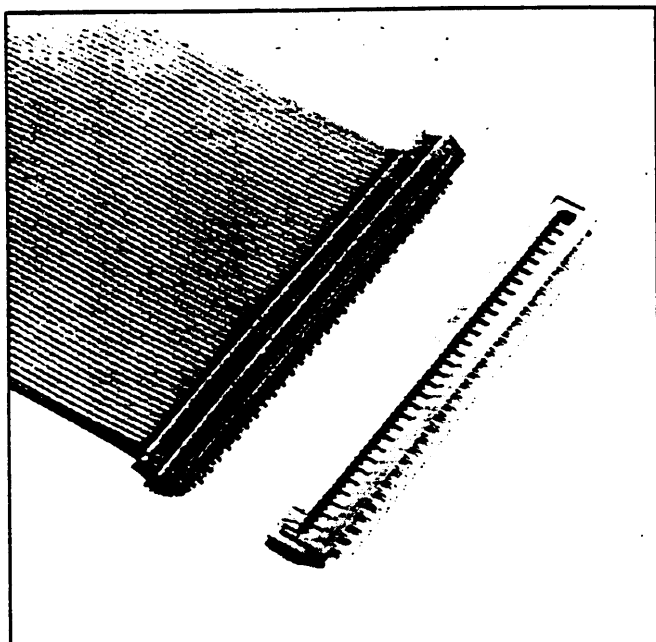


# 100" x .100" PCB

Two Row

3900 Series



- Fits standard .100 inch x .100 inch header layout
- Uses less board area than 4-row design
- Optional strain relief

110

TS-0004-10  
Sheet 1 of 3

## Physical

**Insulation**

Material: Glass Filled Polyester (PBT)  
Flammability: UL 94V-0  
Color: Gray

**Contact**

Material: See Ordering Information

**Plating**

Underplate: 2.5  $\mu\text{m}$  [100  $\mu\text{m}$ ] Nickel — QQ-N-290, Class 2  
U-Slot & Solder Tails: 5.1  $\mu\text{m}$  [200  $\mu\text{m}$ ] Tin Lead — MIL-G-81728

Marking: 3M Logo, Part Identification Number

**Strain Relief**

Material: Stainless Steel, 0.38 [0.15] Thk  
Gray PVC

Wire Accommodation: Solid: 26, 28, & 30 AWG, Stranded: 26 & 28 Awg

## Electrical

Current Rating: 1 A  
Insulation Resistance:  $> 1 \times 10^9 \Omega$  at 500 Vdc  
Withstanding Voltage: 1000 Vrms at Sea Level

## Environmental

Temperature Rating:  $-55^\circ\text{C}$  to  $+105^\circ\text{C}$

UL File No.: E68080  
CSA File No.: LR 46900

**3M Electronic Products Division**

6801 River Place Blvd.  
Austin, TX 78726-9000

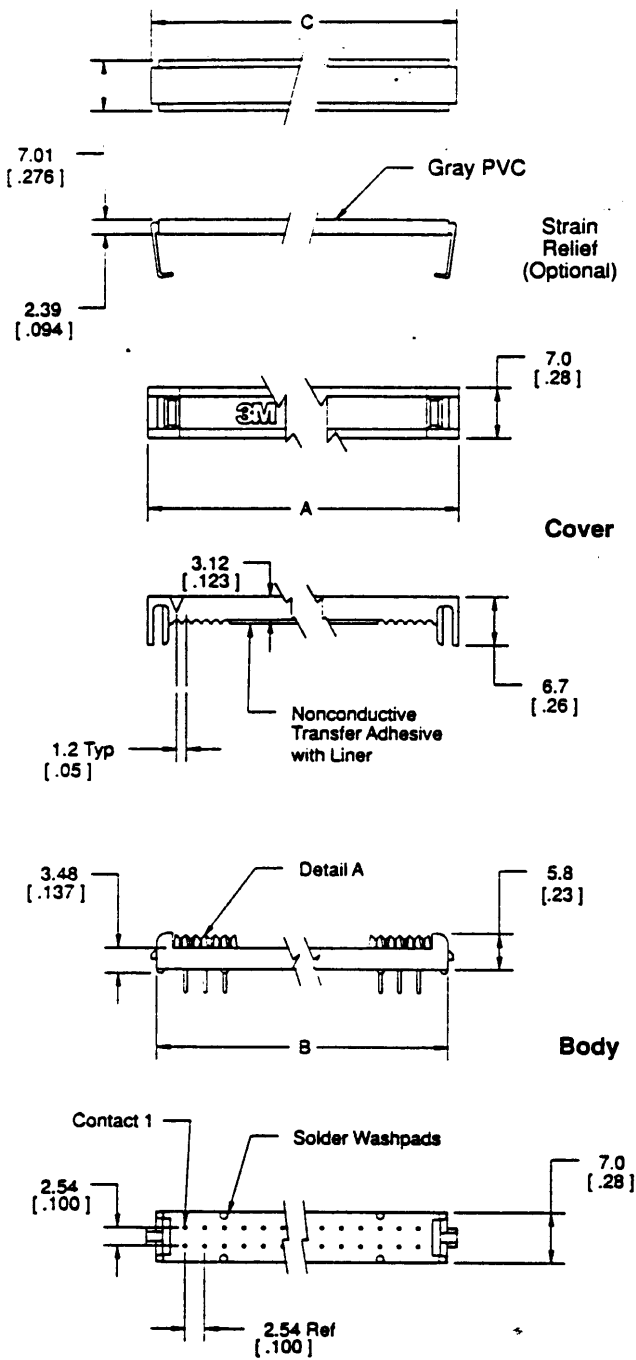
# 100" x .100" PCB

Two Row

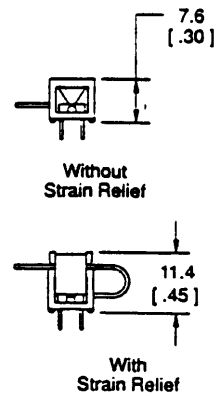
3900 Series

Sheet 2 of 3

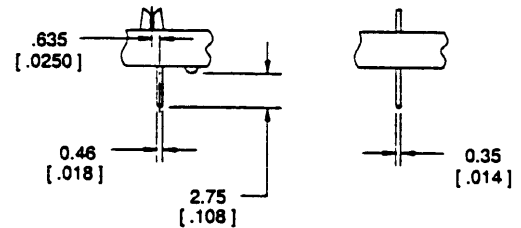
TS-0004-10



### Assembled Height



### Detail A



mm [ Inch ]			
Tolerance Unless Noted			
	.0	.00	.000
mm	±.3	±.13	

[ ] Dimensions for Reference Only

## Ordering Information

**Connector**  
39XX-X0X0T

Contact Quantity:  
See Table

Cover Style:  
0 = Cover, Two Piece,  
with Adhesive  
1 = Cover, Preassembled  
No Adhesive

Contact Material:  
0 = Be Cu (C172) (Standard)  
2 = Phosphor Bronze (Special Order)

**Strain Relief**  
(Optional)

3448-39XX

Contact Quantity:  
See Table

3M Electronic Products Division

6801 River Place Blvd.  
Austin, TX 78726-9000

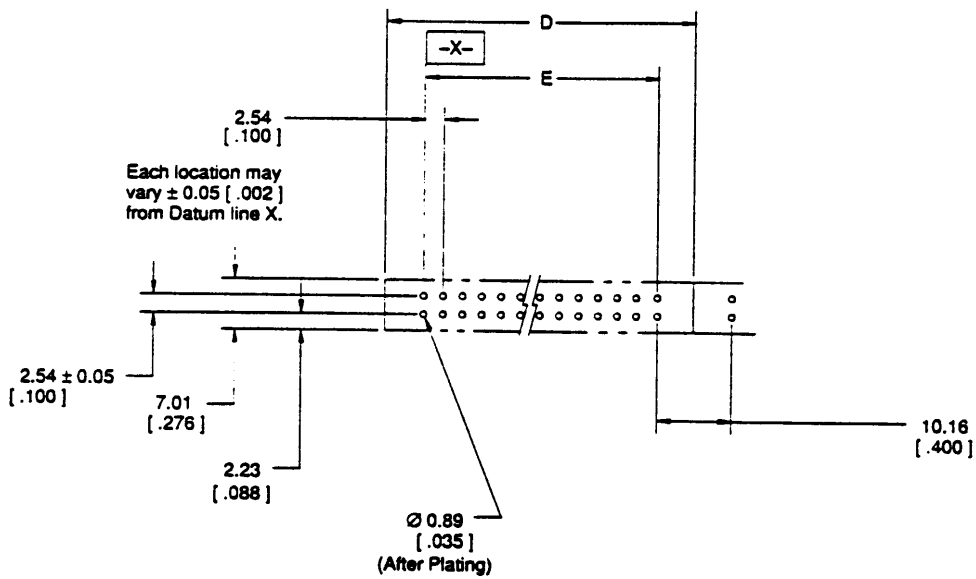
# 100" x .100" PCB

Two Row

3900 Series

CONTACT QUANTITY	DIM A	DIM B	DIM C	DIM D	DIM E
06	15.2 [0.60]	12.8 [0.50]	14.8 [0.57]	15.2 [0.60]	5.1 [0.20]
08	17.7 [0.70]	15.3 [0.60]	17.1 [0.67]	17.7 [0.70]	7.6 [0.30]
10	20.4 [0.80]	17.8 [0.70]	19.8 [0.78]	20.4 [0.80]	10.2 [0.40]
14	25.5 [1.00]	22.9 [0.90]	25.0 [0.98]	25.5 [1.00]	15.2 [0.60]
18	28.1 [1.10]	25.5 [1.00]	27.4 [1.08]	28.1 [1.10]	17.8 [0.70]
20	33.1 [1.30]	30.5 [1.20]	32.5 [1.28]	33.1 [1.30]	22.9 [0.90]
24	38.0 [1.50]	35.6 [1.40]	37.4 [1.47]	38.0 [1.50]	27.9 [1.10]
28	40.8 [1.60]	38.2 [1.50]	40.0 [1.57]	40.8 [1.60]	30.5 [1.20]
30	45.6 [1.80]	43.2 [1.70]	45.0 [1.77]	45.6 [1.80]	35.6 [1.40]
34	50.9 [2.00]	48.3 [1.90]	50.3 [1.98]	50.9 [2.00]	40.8 [1.60]
38	53.3 [2.10]	50.9 [2.00]	52.6 [2.07]	53.3 [2.10]	43.2 [1.70]
40	58.5 [2.30]	55.9 [2.20]	58.0 [2.28]	58.5 [2.30]	48.3 [1.90]
50	71.2 [2.80]	68.6 [2.70]	70.8 [2.78]	71.2 [2.80]	61.0 [2.40]
60	83.9 [3.30]	81.3 [3.20]	83.3 [3.28]	83.9 [3.30]	73.7 [2.90]
64	89.0 [3.50]	86.4 [3.40]	88.4 [3.48]	89.0 [3.50]	78.7 [3.10]

Sheet 3 of 3



Recommended Board Layout

TS-0004-10

3M Electronic Products Division

6801 River Place Blvd.  
Austin, TX 78726-9000