



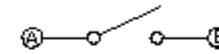
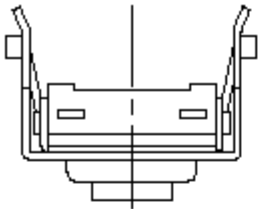
PART NO.

MCTA4-TH4 - Series

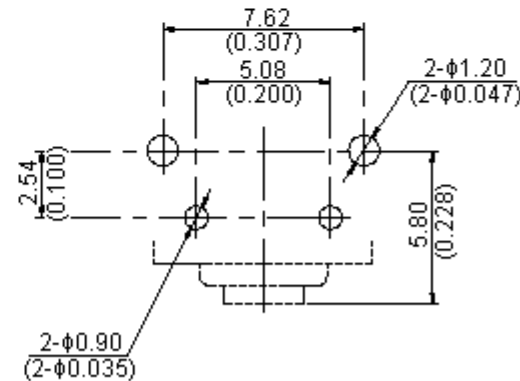
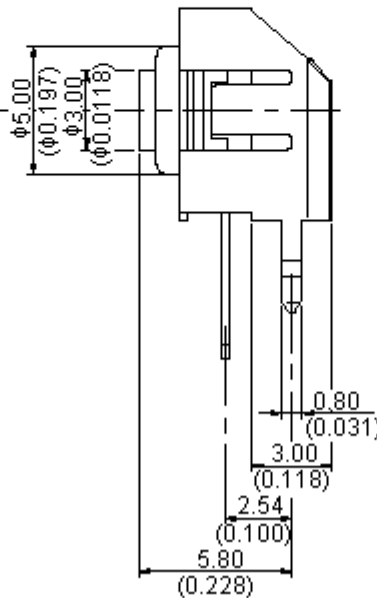
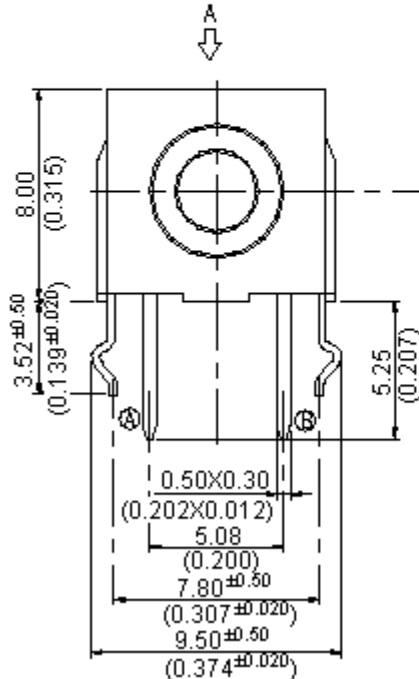
REVISIONS

ECN #	REV	DESCRIPTION	DRAWN	DATE	CHECKD	DATE	APPRVD	DATE
-	A	RELEASED	Geetha	18/6/08	Suresh	18/6/08	G. C	02/7/08

TA4



CIRCUIT



PCB Layout  
(View from the Direction A)

Dimensions : Millimetres (Inches)

This data sheet and its contents (the "Information") belong to the Premier Farnell Group (the "Group") or are licensed to it. No licence is granted for the use of it other than for information purposes in connection with the products to which it relates. No licence of any intellectual property rights is granted. The Information is subject to change without notice and replaces all data sheets previously supplied. The Information supplied is believed to be accurate but the Group assumes no responsibility for its accuracy or completeness, any error in or omission from it or for any use made of it. Users of this data sheet should check for themselves the Information and the suitability of the products for their purpose and not make any assumptions based on information included or omitted. Liability for loss or damage resulting from any reliance on the Information or use of it (including liability resulting from negligence or where the Group was aware of the possibility of such loss or damage arising) is excluded. This will not operate to limit or restrict the Group's liability for death or personal injury resulting from its negligence. SPC MULTICOMP is the registered trademark of the Group. © Premier Farnell plc 2008.

TOLERANCES:  
UNLESS OTHERWISE SPECIFIED, DIMENSIONS ARE FOR REFERENCE PURPOSES ONLY.

DRAWN BY:	DATE:
Geetha	18/06/08
CHECKED BY:	DATE:
Suresh	18/06/08
APPROVED BY:	DATE:
G.Cook	02/07/08

DRAWING TITLE:			
TACT Switch - Right Angle			
SIZE	DWG NO.	ELECTRONIC FILE	REV
A	M10001250	TA4 & TH4 Datasheet_DWG	A
SCALE: NTS		U.O.M.: mm (Inches)	SHEET: 1 OF 4



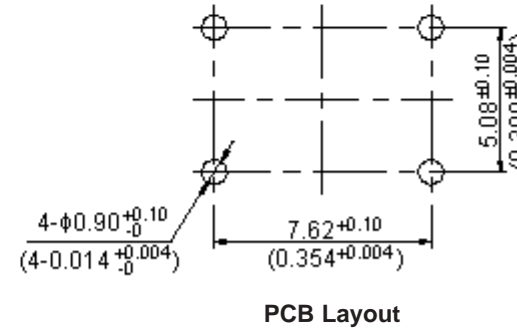
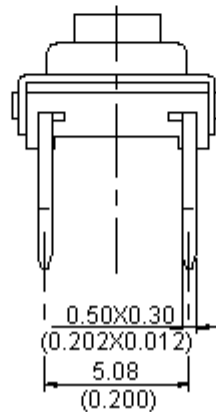
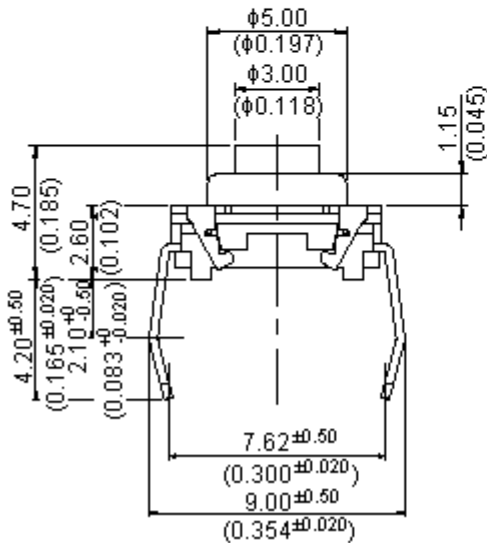
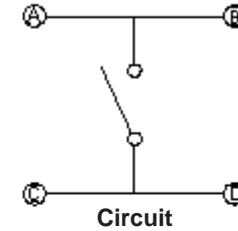
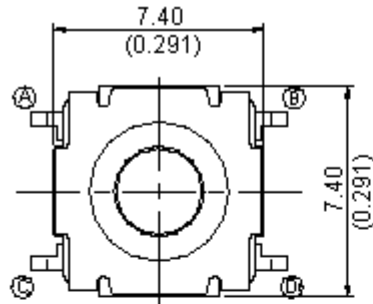
PART NO.

MCTA4-TH4 - Series

REVISIONS

ECN #	REV	DESCRIPTION	DRAWN	DATE	CHECKD	DATE	APPRVD	DATE
-	A	RELEASED	Geetha	18/6/08	Suresh	18/6/08	G. C	02/7/08

TH4



Dimensions : Millimetres (Inches)

This data sheet and its contents (the "Information") belong to the Premier Farnell Group (the "Group") or are licensed to it. No licence is granted for the use of it other than for information purposes in connection with the products to which it relates. No licence of any intellectual property rights is granted. The Information is subject to change without notice and replaces all data sheets previously supplied. The Information supplied is believed to be accurate but the Group assumes no responsibility for its accuracy or completeness, any error in or omission from it or for any use made of it. Users of this data sheet should check for themselves the information and the suitability of the products for their purpose and not make any assumptions based on information included or omitted. Liability for loss or damage resulting from any reliance on the Information or use of it (including liability resulting from negligence or where the Group was aware of the possibility of such loss or damage arising) is excluded. This will not operate to limit or restrict the Group's liability for death or personal injury resulting from its negligence. SPC MULTICOMP is the registered trademark of the Group. © Premier Farnell plc 2008.

TOLERANCES:  
UNLESS OTHERWISE SPECIFIED, DIMENSIONS ARE FOR REFERENCE PURPOSES ONLY.

DRAWN BY:	DATE:
Geetha	18/06/08
CHECKED BY:	DATE:
Suresh	18/06/08
APPROVED BY:	DATE:
G.Cook	02/07/08

DRAWING TITLE:			
TACT Switch - Right Angle			
SIZE	DWG NO.	ELECTRONIC FILE	REV
A	M10001250	TA4 & TH4 Datasheet_DWG	A
SCALE: NTS		U.O.M.: mm (Inches)	SHEET: 2 OF 4



PART NO.

MCTA4-TH4 - Series

REVISIONS

ECN #	REV	DESCRIPTION	DRAWN	DATE	CHECKD	DATE	APPRVD	DATE
-	A	RELEASED	Geetha	18/6/08	Suresh	18/6/08	G. C	02/7/08

**Specifications:**

**Mechanical:**

Mechanical life : 1,000,000 cycles.  
 Operating force : 130 ±50gf.  
 Stroke : 0.5 ±0.2mm.

**Environmental:**

Operating temperature range : -40°C to +90°C.  
 Storage temperature range : -40°C to +90°C.

**Electrical:**

Electrical life : 1,000,000 cycles.  
 Switching rating : 50mA, 50V dc.

**Material:**

Bracket : Phosphor bronze with silver plating  
 Cover : Brass.  
 Base : Nylon high-temperature thermoplastic  
 Color : Black.  
 Stem : Nylon high-temperature thermoplastic  
 Color : with silver plating.  
 Terminal : Brass with silver plating.  
 Silicone rubber : Silicone.  
 Color : White  
 Dome : Stainless steel.

**Soldering Process:**

**Hand Soldering** : Use a soldering iron of 30 watts, controlled at 350°C approximately 5 seconds while applying solder.  
**Wave Soldering** : Recommended solder temperature at 500°F (260°C) maximum 5 seconds.

This data sheet and its contents (the "Information") belong to the Premier Farnell Group (the "Group") or are licensed to it. No licence is granted for the use of it other than for information purposes in connection with the products to which it relates. No licence of any intellectual property rights is granted. The Information is subject to change without notice and replaces all data sheets previously supplied. The Information supplied is believed to be accurate but the Group assumes no responsibility for its accuracy or completeness, any error in or omission from it or for any use made of it. Users of this data sheet should check for themselves the Information and the suitability of the products for their purpose and not make any assumptions based on information included or omitted. Liability for loss or damage resulting from any reliance on the Information or use of it (including liability resulting from negligence or where the Group was aware of the possibility of such loss or damage arising) is excluded. This will not operate to limit or restrict the Group's liability for death or personal injury resulting from its negligence. SPC MULTICOMP is the registered trademark of the Group. © Premier Farnell plc 2008.

**TOLERANCES:**

UNLESS OTHERWISE SPECIFIED, DIMENSIONS ARE FOR REFERENCE PURPOSES ONLY.

<b>DRAWN BY:</b>	<b>DATE:</b>
Geetha	18/06/08
<b>CHECKED BY:</b>	<b>DATE:</b>
Suresh	18/06/08
<b>APPROVED BY:</b>	<b>DATE:</b>
G.Cook	02/07/08

**DRAWING TITLE:**

TACT Switch - Right Angle

<b>SIZE</b> A	<b>DWG NO.</b> M10001250	<b>ELECTRONIC FILE</b> TA4 & TH4 Datasheet_DWG	<b>REV</b> A
<b>SCALE:</b> NTS		<b>U.O.M.:</b> mm (Inches)	<b>SHEET:</b> 3 OF 4



PART NO.

MCTA4-TH4 - Series

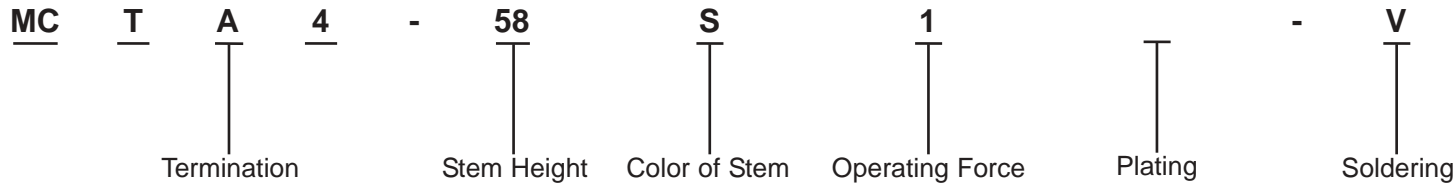
REVISIONS

ECN #	REV	DESCRIPTION	DRAWN	DATE	CHECKD	DATE	APPRVD	DATE
-	A	RELEASED	Geetha	18/6/08	Suresh	18/6/08	G. C	02/7/08

Part Number Table

Description	Part Number
Switch, Tactile, R/A, 130gf	MCTA4-58S1-V
Switch, Tactile, R/A, 300gf	MCTA4-58S2-V
Switch, Tactile, R/A, 130gf	MCTH4-47S1-V
Switch, Tactile, R/A, 300gf	MCTH4-47S2-V

Part Number Explanation:



- Termination** : A = Right Angle Series and H = Through Hole.
- Stem Height** : 58 = 5.8mm (Only Right Angle Series) and 47 = 4.7mm (Only Through Hole Type).
- Color of Stem** : S = Salmon.
- Operating Force** : 1 = 130gf and 2 = 300gf.
- Plating** :  Silver.
- Soldering** : V = Lead Free Solderable.

<http://www.farnell.com>  
<http://www.newark.com>  
<http://www.cpc.co.uk>

This data sheet and its contents (the "Information") belong to the Premier Farnell Group (the "Group") or are licensed to it. No licence is granted for the use of it other than for information purposes in connection with the products to which it relates. No licence of any intellectual property rights is granted. The Information is subject to change without notice and replaces all data sheets previously supplied. The Information supplied is believed to be accurate but the Group assumes no responsibility for its accuracy or completeness, any error in or omission from it or for any use made of it. Users of this data sheet should check for themselves the Information and the suitability of the products for their purpose and not make any assumptions based on information included or omitted. Liability for loss or damage resulting from any reliance on the Information or use of it (including liability resulting from negligence or where the Group was aware of the possibility of such loss or damage arising) is excluded. This will not operate to limit or restrict the Group's liability for death or personal injury resulting from its negligence. SPC MULTICOMP is the registered trademark of the Group. © Premier Farnell plc 2008.

<b>TOLERANCES:</b>  UNLESS OTHERWISE SPECIFIED, DIMENSIONS ARE FOR REFERENCE PURPOSES ONLY.	DRAWN BY:	DATE:	<b>DRAWING TITLE:</b>  TACT Switch - Right Angle			
	Geetha	18/06/08				
	CHECKED BY:	DATE:	SIZE	DWG NO.	ELECTRONIC FILE	REV
	Suresh	18/06/08	A	M10001250	TA4 & TH4 Datasheet_DWG	A
APPROVED BY:	DATE:	SCALE: NTS		U.O.M.: mm (Inches)		SHEET: 4 OF 4
G.Cook	02/07/08					