

Brand New! Unique Product Development!

Modular Thru-Panel Medium-Power Block

Pitch: 16mm

600 Volts / 60 Amps

PART#:
OTB-358

Type:
Medium-Power Thru Panel

Features:
Thru-panel, barrier construction
Plastic, finger-safe cover included

Applications:
Suitable for:
Motor Controls
Industrial Controls
Pump Controls
Electrical Switch Gear
Off-Highway Vehicles

Electrical
Rated Voltage:
600V
Rated Current:
60A

Wire Size:
3-10AWG CU

Operating Temperature:
-40C to +90C

Materials
Housing:
Polycarbonate (UL94V-0)
Standard Color: Black
Cover:
Polycarbonate (UL94V-0), Clear

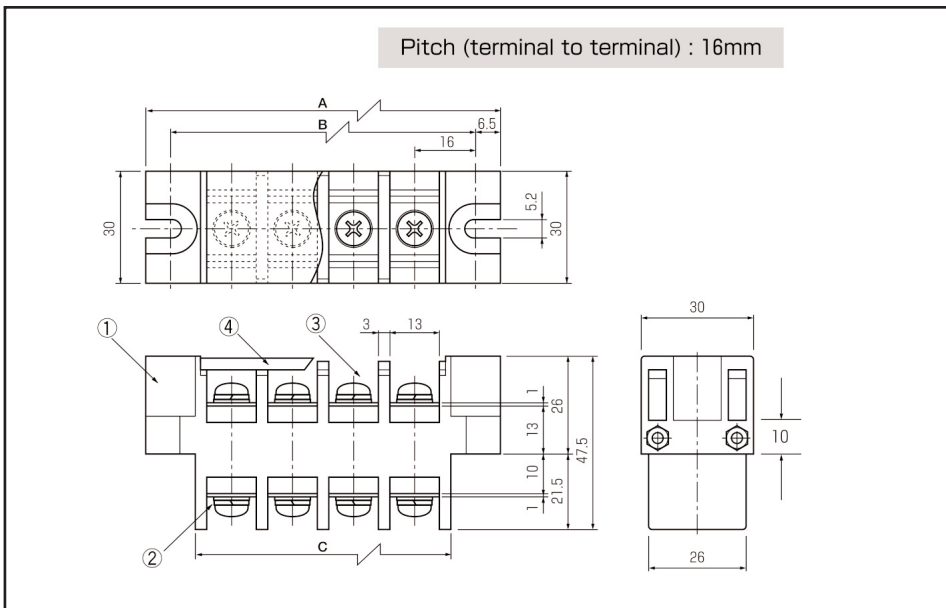
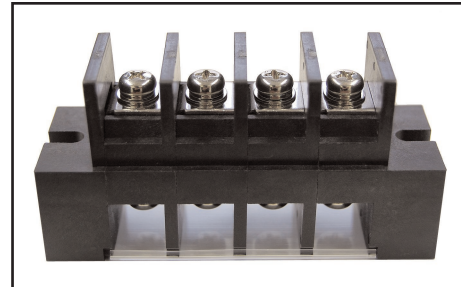
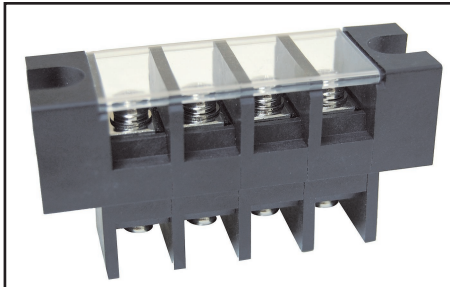
Terminal:
Brass, Nickel Plated

Positions Available:
2-15

Screw Size:
M5x12L, Steel, Nickel plated

Withstanding Voltage:
AC2500V

Torque:
2 inch lbs.

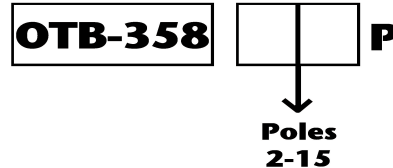


BlockMaster Electronics' new OTB-358 Series are medium power, thru-panel terminal blocks available in 2-15 positions.

BlockMaster's OTB-358 series are perfect for interfacing internally wired products to the outside world. They offer a clear, protective cover to reduce shock hazard, and each terminal has a screw with lockwasher for convenient field wiring as shown. Suitable for industrial controls, spa controls or any medium power field wiring to control box application.



HOW TO ORDER:



1400 Howard Street Phone: (847) 956-1680
Elk Grove Village, IL 60007 Fax: (847) 956-1690

www.BlockMaster.com