

FEATURES AND SPECIFICATIONS

Features and Benefits

- Avoids tangling at pre-assembly
- Available with cat ears

Reference Information

Product Specification: PS-10-07

Packaging: Reel or bag

Tooling Information: See crimp tooling section

UL File No.: E29179

CSA File No.: LR19980

Mates With: 5051-NM and 6471 housings

Designed In: Inches

Electrical

Voltage: 250V

Current: 2.5A

Contact Resistance: 20mΩ max.

Dielectric Withstanding Voltage: 1500V

Insulation Resistance: 500K MΩ min.

Mechanical

Contact Insertion Force: 681g max.

Contact Retention to Housing: 27.21g min.

Wire Pull-Out Force: 3 lb min.

Mating Force: 199g max.

Unmating Force: 57g min.

Normal Force: 300g

Durability: 50 cycles Gold and 25 cycles Tin

Physical

Contact: Brass

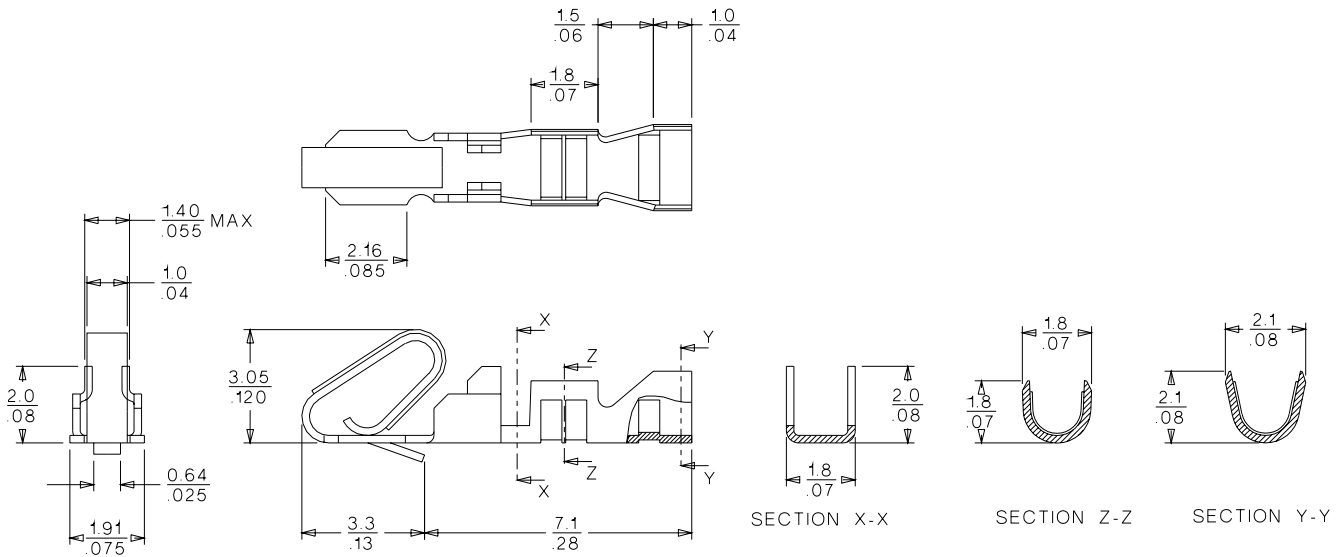
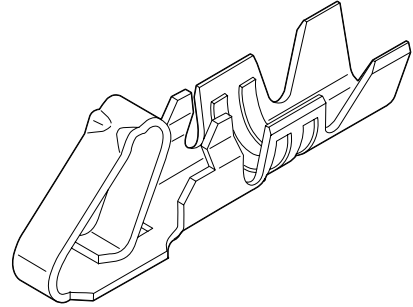
Plating: Gold, select Gold and Tin/Lead

Temperature: Storage— -40 to +105°C

Operating— 0 to +75°C

Wire Accommodation: 22 to 30 AWG

molex® 2.54mm (.100") Pitch
KK®
Crimp Terminal

4809**Anti-Fishhooking**

ORDERING INFORMATION

Order No.		Plating	Crimp Wire Size	Insulation Diameter	Engineering No.
Bag	Reel				
08-50-0032	08-50-0031	1.00 to 2.50μm Tin/Lead	22-30	1.57 (.062) max.	4809
08-55-0111	08-55-0110	0.38μm Gold in contact area only			
08-56-0115	08-56-0120	0.38μm Gold in contact area, Gold flash overall			