

PRODUCT NUMBER

5 2 6 0 1 - X X X - X X X X LF

PLATING

S=15µ"[0.38µm]GOLD ON CONTACT AREA (NOTE 13)
100µ"[2.54µm]TIN ON TAIL
G=30µ"[0.76µm]GOLD ON CONTACT AREA (NOTE 13)
100µ"[2.54µm]TIN ON TAIL

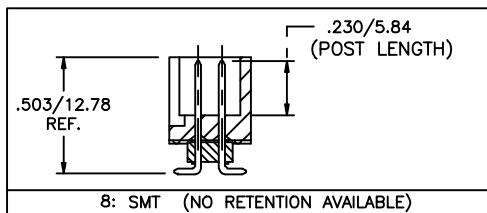
LEAD FREE OPTION NOTE 10,11,12
PACKAGE NOTE 5

RETENTION R= RETENTIVE LEG (NOTE 6)

POLARIZATION NOTE 9

| TAIL | | |
|------|------------|------|
| + | .090/2.29 | OBS. |
| - | .142/2.84 | OBS. |
| 4 | .120/3.05 | |
| 6 | .150/3.81 | |
| - | .675/17.15 | OBS. |
| 8 | SMT | |

| | TOTAL POSITIONS | HDR. STYLE |
|----|-----------------|------------|
| 10 | 2 x 5 | B |
| 14 | 2 x 7 | C |
| 16 | 2 x 8 | D |
| 20 | 2 x 10 | D |
| 26 | 2 x 13 | D |
| 30 | 2 x 15 | D |
| 34 | 2 x 17 | D |
| 40 | 2 x 20 | D |
| 44 | 2 x 22 | D |
| 50 | 2 x 25 | D |
| 60 | 2 x 30 | D |

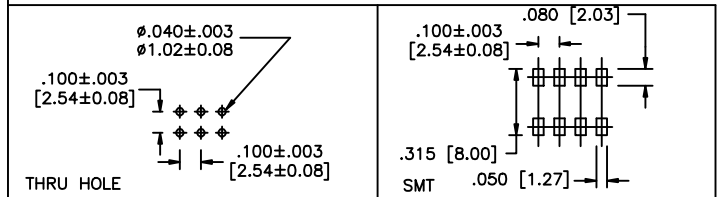
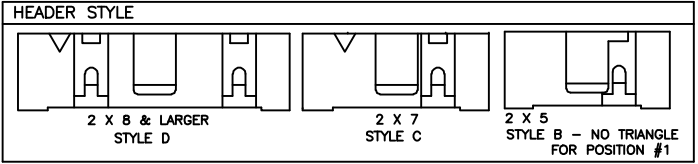
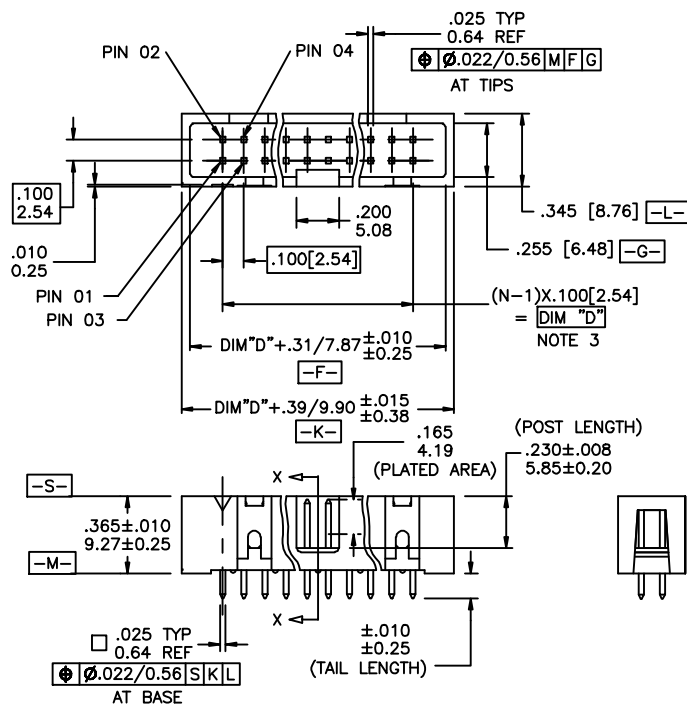


NOTES:

- HOUSING MAT'L: HIGH TEMPERATURE THERMOPLASTIC. UL94V-0
COLOR: BLACK
OR
MINERAL FILLED LCP FLAME RETARDANT
PER UL-94V-0. COLOR: BLACK.
- PIN MATERIAL: PHOSPHOR-BRONZE
- TO DETERMINE DIMENSIONS:
N = NUMBER OF POSITIONS PER ROW
EXAMPLE: 10 POS.,(N-1) x .100[2.54]=.900[22.86]
- 3 LBS./1.36 KG MIN. RETENTION
- PACKAGED IN TRAYS,
PART NUMBER FOLLOWS BY "T" SUFFIX ARE PACKAGED
TAPE ON REEL WITH PACK-UP INSTALLED. VACUUM CAP TO BE
CENTRALLY LOCATED REGARDLESS OF NUMBER OF POSITIONS (SHEET 3)
- RETENTIVE LEG APPLICABLE TO TAIL LENGTHS .125/3.18 MAX.
5LB/2.3KG MAX INSERTION FORCE AND .25LB./1KG MIN RETENTION FORCE
PER RETENTIVE PIN USING .062/1.57 THICK CIRCUIT BOARD AND RECOMMENDED
HOLE PATTERN. RETENTIVE LOCATION AT THE DISCRETION OF THE MANUFACTURER.
RETENTION PIN MAY BE SHIFTED TO NEXT POSITION.
- OMIT FROM PRODUCT NUMBER IF THIS FEATURE IS NOT APPLICABLE.
- UNDERPLATING: 50µ"/1.27µm Ni.
- FOR POLARIZATION SPECIFY POSITION NUMBER (i.e. 03 = PIN 3) TO OMIT PIN.
OMIT FROM PRODUCT NUMBER IF THIS FEATURE IS NOT APPLICABLE.
- ADD "Lf" SUFFIX AT THE END OF PART NUMBER FOR LEAD FREE OPTION.
- THE HOUSING WILL WITHSTAND EXPOSURE TO 260°C PEAK TEMPERATURE
FOR 15 SECONDS IN A WAVE SOLDER APPLICATION WITH A 1.5mm
MINIMUM THICK CIRCUIT BOARD. SEE APPLICATION NOTES/PROCEDURES
IF THEY ARE AVAILABLE.

THE HOUSING WILL WITHSTAND EXPOSURE TO 260°C PEAK TEMPERATURE
FOR 20 SECONDS IN A CONVECTION, INFRA-RED OR VAPOR PHASE
REFLOW OVEN. SEE APPLICATION NOTES/PROCEDURES IF THEY ARE AVAILABLE.
- THIS PRODUCT MEETS EUROPEAN UNION DIRECTIVES AND OTHER
COUNTRY REGULATION AS DESCRIBED IN GS-22-008.
- PLATING OPTIONS:
MAY BE EITHER GOLD OR GXT PLATED AT MANUFACTURER'S OPTION.

| | | | | | |
|-------------|----------|--------------------|----------------------------------|---------------------------------------|--|
| mat'l. code | | surface ISO 902 | tolerance ISO 406 ISO 1101 | projection | product family QUICKIE |
| ltr | ecn no | dr | date | tolerances unless otherwise specified | title |
| P | M07-0185 | MHT | 4/16/07 | angles | .100/2.54mm LOW PROFILE SHOROUDED VERTICAL HEADER |
| R | M08-001d | MHT | 1/11/07 | linear | |
| S | M08-0117 | MHT | 4/24/08 | 0'±2' | scale 1:1 |
| T | M08-0118 | MHT | 4/22/08 | dr | D. INGRAM 7/7/99 |
| U | M08-0237 | MHT | 5/25/08 | engr | L. GREEN 7/12/99 |
| V | M08-0261 | MHT | 8/19/08 | chr | L. GREEN 7/12/99 |
| W | M08-0279 | MHT | 9/30/08 | appd | L. GREEN 7/21/99 |
| sheet | revision | w | w | w | dwg no |
| index | sheet | 1 | 2 | 3 | 52601 |



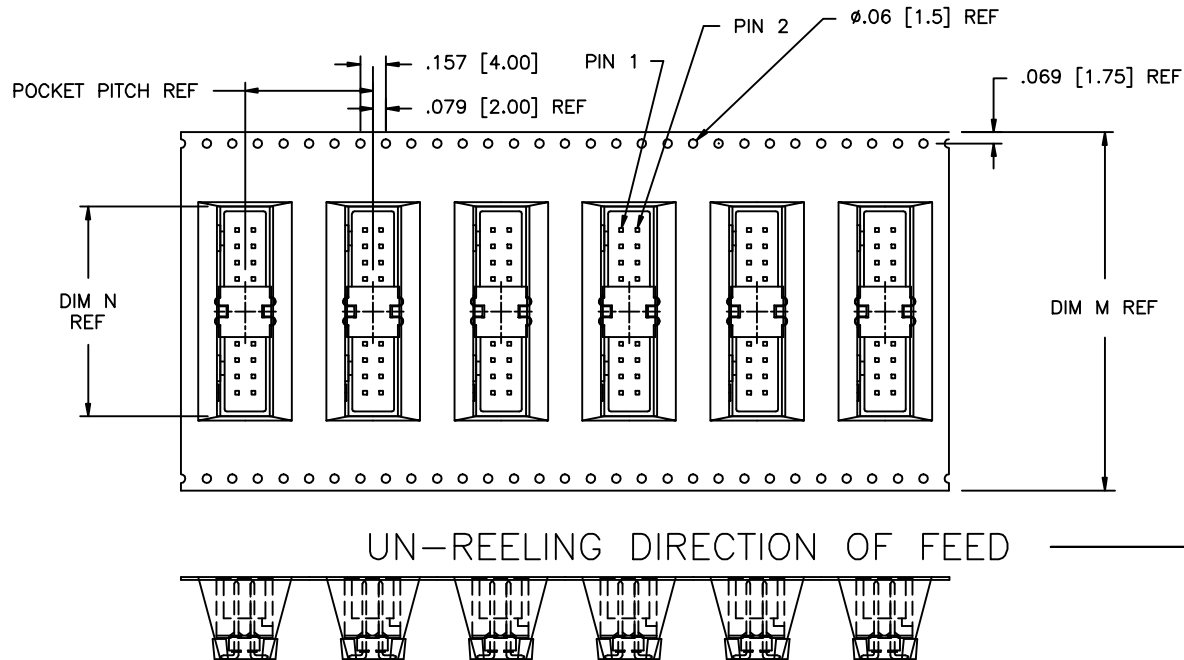
| | | | | | | | | | |
|-------------|--|-----------------|--|-------------------|--|------------|--|--|--|
| mat'l. code | | surface ISO 902 | | tolerance ISO 406 | | projection | | product family | |
| ltr | | ecn no | | dr | | date | | QUICKIE | |
| w | | angles | | linear | | INCH/MM | | title | |
| | | 0' ± 2' | | XXX±.01/XXX±.03 | | scale 1:1 | | .100/2.54mm LOW PROFILE SHROUDED VERTICAL HEADER | |
| dr | | engr | | chr | | appd | | dwg no | |
| D. INGRAM | | L. GREEN | | L. GREEN | | L. GREEN | | sheet 2 of 3 size | |
| 7/7/99 | | 7/12/99 | | 7/12/99 | | 7/21/99 | | 52601 A3 | |
| sheet | | revision | | index | | sheet | | type | |
| | | | | | | | | Product Customer Drawing | |



Copyright FCI

| PRODUCT No. NOTE 10 | NO. OF POSITIONS | HSG. STYLE | POLARIZED POSITION | PACKAGING | POCKET PITCH | DIM M | DIM N |
|------------------------|---------------------|---------------|-----------------------|--------------|--------------|-------------|-------------|
| 52601-S10-801T | 2 X 5 | B | 01 | TAPE-ON-REEL | 0.787/20.00 | 1.260/32.00 | 0.790/20.07 |
| 52601-S10-805T | 2 X 5 | B | 05 | TAPE-ON-REEL | 0.787/20.00 | 1.260/32.00 | 0.790/20.07 |
| 52601-S10-807T | 2 X 5 | B | 07 | TAPE-ON-REEL | 0.787/20.00 | 1.260/32.00 | 0.790/20.07 |
| 52601-S14-807T | 2 X 7 | C | 07 | TAPE-ON-REEL | 0.787/20.00 | 1.732/44.00 | 1.090/27.69 |
| 52601-S14-80714T | 2 X 7 | C | 07,14 | TAPE-ON-REEL | 0.787/20.00 | 1.732/44.00 | 1.090/27.69 |
| 52601-X16-8T | 2 X 8 | D | - | TAPE-ON-REEL | 0.787/20.00 | 1.732/44.00 | 1.090/27.69 |
| 52601-X20-8T | 2 X 10 | D | - | TAPE-ON-REEL | 0.787/20.00 | 2.204/56.00 | 1.290/32.77 |
| 52601-X30-8T | 2 X 15 | D | - | TAPE-ON-REEL | 0.787/20.00 | 2.834/72.00 | 1.786/45.37 |

* SPECIAL CUSTOMER



| | | | | | |
|-------------|----------|-----------|-----------|---|----------------|
| mat'l. code | | surface | tolerance | projection | product family |
| ISO 1902 | | ISO 406 | ISO 2101 | | QUICKIE |
| ltr | ecn no | dr | date | title | |
| w | | | | .100/2.54mm LOW PROFILE SHOROUDED VERTICAL HEADER | |
| angles | | linear | 0°±2' | INCH/MM | scale 1:1 |
| dr | | D. INGRAM | 7/7/99 | dwg no sheet 3 of 3 size | |
| engr | | L. GREEN | 7/12/99 | 52601 A3 | |
| chr | | L. GREEN | 7/12/99 | type Product Customer Drawing | |
| appd | | L. GREEN | 7/21/99 | | |
| sheet | revision | | | | |
| index | sheet | | | | |