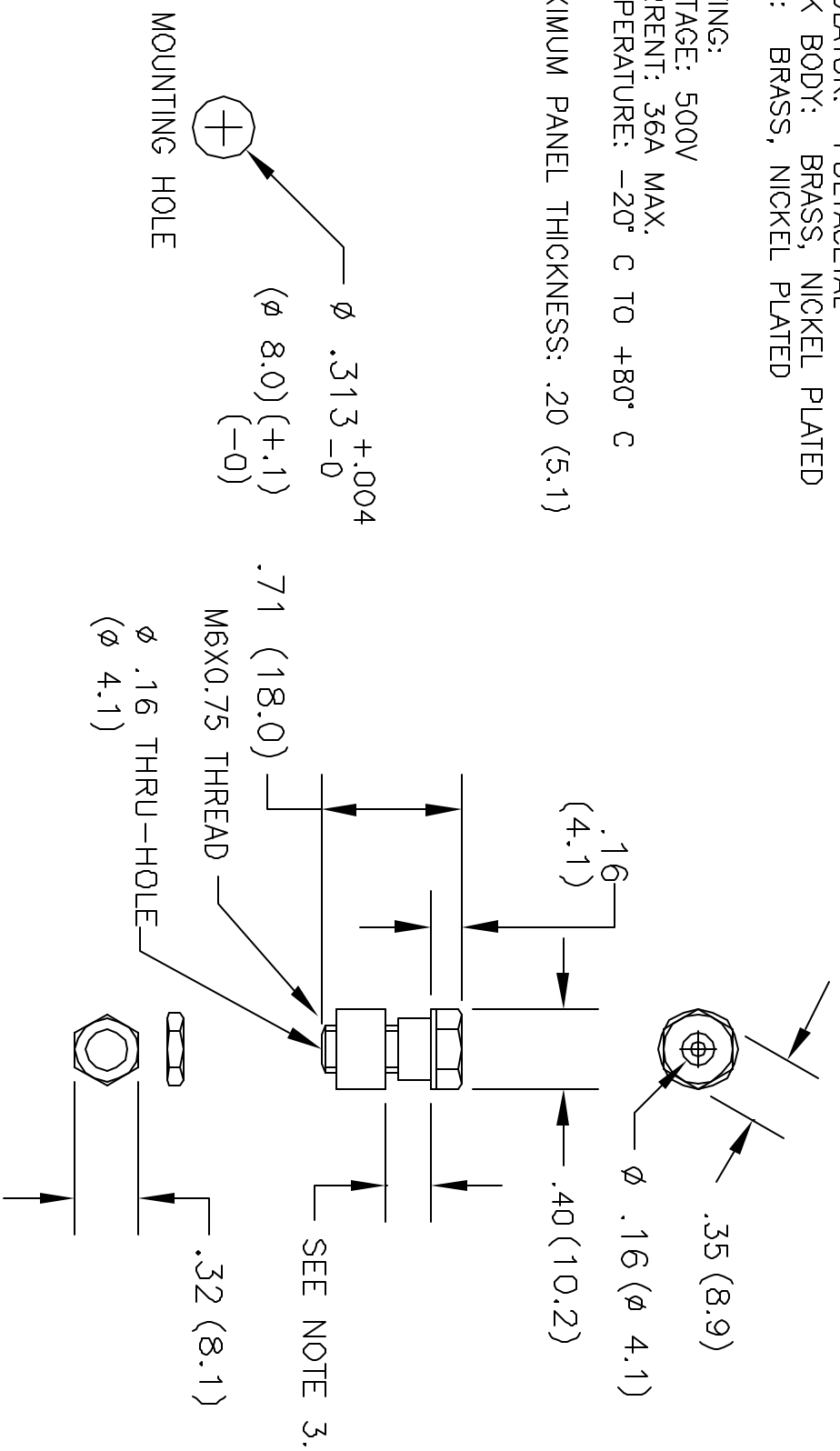


ALL RIGHTS RESERVED. NO PORTION OF THIS PUBLICATION, WHETHER IN WHOLE OR IN PART CAN BE REPRODUCED WITHOUT THE EXPRESS WRITTEN CONSENT OF SPC TECHNOLOGY.

REVISIONS		DOC. NO.	SPC-FD05	Effective:	12/21/98	Doc No.	B80	
DCP #	REV	DESCRIPTION	DRAWN	DATE	CHECKD	DATE	APPRVD	DATE
170	A	RELEASED	SAS	07/21/99	JC	11/1/99	DJC	12/29/99

1. MATERIAL:  
INSULATOR: POLYACETAL  
JACK BODY: BRASS, NICKEL PLATED  
NUT: BRASS, NICKEL PLATED
2. RATING:  
VOLTAGE: 500V  
CURRENT: 36A MAX.  
TEMPERATURE: -20° C TO +80° C
3. MAXIMUM PANEL THICKNESS: .20 (5.1)



**DISCLAIMER**  
ALL STATEMENTS AND TECHNICAL INFORMATION CONTAINED HEREIN ARE BASED UPON INFORMATION AND/OR TESTS WE BELIEVE TO BE ACCURATE AND RELIABLE. SINCE CONDITIONS OF USE ARE BEYOND OUR CONTROL, THE USER SHALL DETERMINE THE SUITABILITY OF THE PRODUCT FOR THE INTENDED USE AND ASSUME ALL RISK AND LIABILITY WHATSOEVER IN CONNECTION THEREWITH.

TOLERANCES	DRAWN BY:	DATE:
FRACTIONS: ±1/32	SCOTT SERRITELLA	07/21/99
DECIMALS: XX ±.01	CHECKED BY:	DATE:
XXX ±.005	JOHN COLE	11/1/99
	APPROVED BY:	DATE:
	DANIEL CAREY	12/28/99

**SPC TECHNOLOGY**

DRAWING TITLE: 4mm INSULATED JACK, THRU-HOLE, RED

SIZE	DWG. NO.	ELECTRONIC FILE	REV
A	2300	92N4662.DWG	A
SCALE:	NTS	U.O.M.: INCHES (MM)	SHEET: 1 OF 1