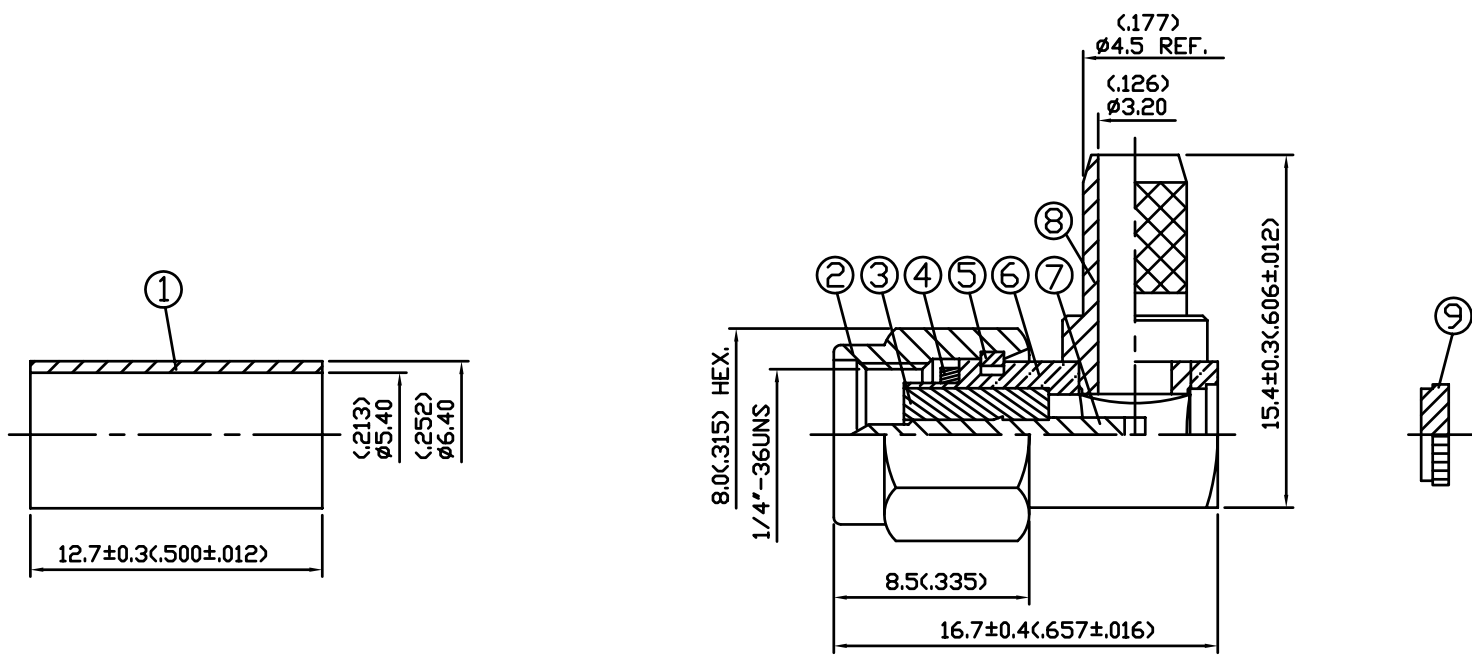


NO	DESCRIPTION	DATE
⚠	BACKGROUND FORMAT UPDATED	07.03.02



NOTES: UNLESS OTHERWISE SPECIFIED

1. BODIES: BRASS PER JIS-C3604
2. CENTER CONTACT: BRASS PER JIS-C3604
3. INSULATION: TEFLON PER ASTM D1457 AND ASTM D1710
4. CRIMP FERRULE: BRASS PER JIS-C2700
5. CONNECTOR INTERFACE PER MIL-STD-348A
6. PART TO BE CLEAN AND FREE OF BURRS

NO	DESCRIPTION	MATERIAL	Q'TY	FINISH
9	CAP	BRASS	1	GOLD 3μ" MIN.
8	CHASSIS	BRASS	1	GOLD 3μ" MIN.
7	CENTER CONTACT	BRASS	1	GOLD 50μ" MIN.
6	BODY	BRASS	1	GOLD 3μ" MIN.
5	WASHER	STAINLESS STEEL	1	NONE
4	GASKET	SILICONE	1	RED
3	INSULATION	TEFLON	1	NONE
2	SHELL	BRASS	1	GOLD 3μ" MIN.
1	CRIMP FERRULE	BRASS	1	GOLD 3μ" MIN.

製圖	DRAWN	TOLERANCE	品名	19-02-8 58U (50Ω)	DATE	版次	REV.
	梁齡允						
檢圖	CHECK	.XX ±0.1	單位	DWG.NO.	19-0170	佳楠精密電子股份有限公司 CHIN NAN PRECISION ELECTRONICS CO.,LTD.	
	沈淑美						
認定	APPROVAL	.XXX ±0.05	比例				
	余賢德	ANGLE ±5°	4:1				