

6

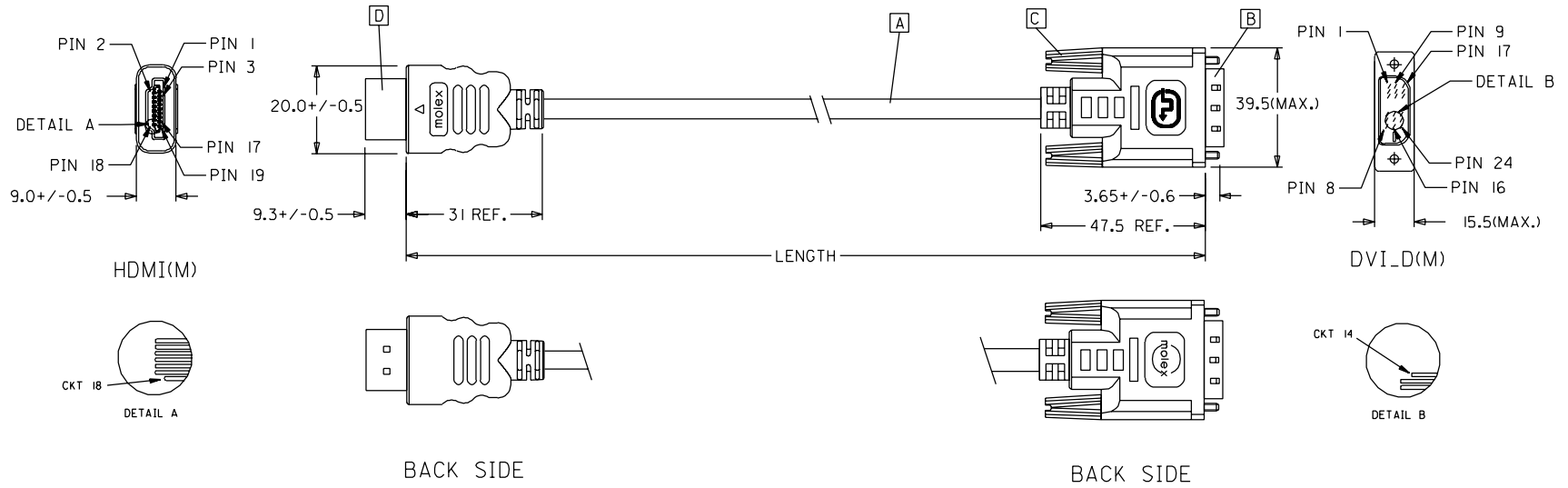
5

4

3

2

1



| | | | | |
|------------|---------------------------------|------------|-------------|----------------------|
| 88768-3620 | HDMI TO DVI-D(M) CABLE ASS'Y,3M | 3000+/-80 | BLACK | 5,5MM(TMDS - AWG*30) |
| 88768-3610 | HDMI TO DVI-D(M) CABLE ASS'Y,2M | 2000+/-60 | BLACK | 5,5MM(TMDS - AWG*30) |
| 88768-3600 | HDMI TO DVI-D(M) CABLE ASS'Y,1M | 1000+/-30 | BLACK | 5,5MM(TMDS - AWG*30) |
| 88768-3530 | HDMI TO DVI-D(M) CABLE ASS'Y,5M | 5000+/-100 | BLACK | 7,3MM(TMDS - AWG*28) |
| 88768-3520 | HDMI TO DVI-D(M) CABLE ASS'Y,3M | 3000+/-80 | BLACK | 7,3MM(TMDS - AWG*28) |
| 88768-3510 | HDMI TO DVI-D(M) CABLE ASS'Y,2M | 2000+/-60 | BLACK | 7,3MM(TMDS - AWG*28) |
| 88768-3500 | HDMI TO DVI-D(M) CABLE ASS'Y,1M | 1000+/-30 | BLACK | 7,3MM(TMDS - AWG*28) |
| MX P/N | DESCRIPTION | LENGTH | CABLE COLOR | CABLE OD |

| | | | | | | | | | | | |
|----------------------------------|-------------|-------------------|---|-----|----------------|--|---|--|--|---------------------|-----------------------|
| EC NO. DRWN: CHK: APPR: | DESCRIPTION | QUALITY SYMBOLS | GENERAL TOLERANCES: (UNLESS SPECIFIED) | | SCALE N.S.T | DESIGN UNITS <input checked="" type="checkbox"/> mm <input type="checkbox"/> INCH | THIRD ANGLE PROJECTION | <input type="checkbox"/> mm <input type="checkbox"/> INCH | <input type="checkbox"/> mm <input checked="" type="checkbox"/> mm ONLY | SHT | REV |
| | | MAJOR ▼ = 0 | 4 PLACES | ±0. | ±. | DRAWN BY & DATE Louis Chen 03/11/17 | TITLE: HDMI(M) TO DVI-D(M) CABLE ASS'Y | | | | |
| | | CRITICAL ▽ = 0 | 3 PLACES | ±0. | ±. | CHECKED BY & DATE Teddy Kan 03/11/17 | MOLEX INCORPORATED | | | | |
| | | | 2 PLACES | ±0. | ±. | APPROVED BY & DATE Baron Chen 03/11/17 | CAD FILENAME S88768AA.SOI | MATERIAL NO. SEE TABLE | DRAWING NO. SD-88768-001 | SHEET NO. 1 OF 2 | REVISE ON CAD ONLY |
| C | REV | | 1 PLACE | ±0. | ±. | THIS DRAWING CONTAINS INFORMATION THAT IS PROPRIETARY TO MOLEX INCORPORATED AND SHOULD NOT BE USED WITHOUT WRITTEN PERMISSION. | | | | | SIZE A4 |
| | | | ANGULAR: ± | ° | | | | | | | |

6

5

4

3

2

1

NOTE: 1. OVERMOLD SPECIFICATION

1.1 DVI BOOT MOLDED WITH SNOW WHITE PVC RESIN P/N.

1.1.1 UL94V-0

1.1.2 HARDNESS (DUROMETER): SHORE A 90-95

1.2 HDMI OUTER MOLD WITH BLACK PVC RESIN. UL94V-0.

2. MECHANICAL SPECIFICATION

2.1 CABLE SHOULD STAND THE PULL FORCE 89-11IN FOR 30 SECONDS WITH NO VISIBLE TERMINATION DAMAGE.

2.2 CABLE SHOULD PASS THE FLEX TEST IN 100 CYCLES AT EACH OF PLANES, PER EIA 364-41, CONDITION 1.

3. CABLE ELECTRICAL SPECIFICATION

3.1 DIELECTRIC STRENGTH: 300V AC FOR 10MS.

3.2 INSULATION RESISTANCE: 10 MEGA Ohms MIN.

3.3 DIFFERENTIAL LINES CHARACTERISTIC IMPEDANCE: 100+/-10 Ohms @TDR.

3.4 CONTACT RESISTANCE: 2 OHMS(MAX.).

3.5 SIGNALS CROSSTALK(FEXT): 5% (MAX.) PER ANSI/EIA-364-90.


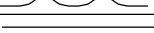

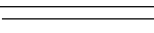


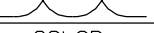

3.6 SIGNALS INTRA-PAIR SKEW : <150 ps.

4. DVI CONNECTOR SPECIFICATION

4.1 REFER TO PRODUCT SPEC. PS74320-0001.

4.2 CONTACT PLATING: AU FLASH.

5. MATERIAL MUST MEET MANAGEMENT REGULATIONS FOR ENVIRONMENT (MX TS-0002).

| SHIELD | SHIELD | | GROUND |
|--------|--------|---|--------------------|
| PIN 19 | PIN 16 | ===== | HOT PLUG DETECT |
| PIN 18 | PIN 14 | ===== | POWER +5V |
| PIN 17 | PIN 15 | ===== | GROUND(+5V&DDC) |
| PIN 16 | PIN 7 | ===== | DDC DATA(SDA) |
| PIN 15 | PIN 6 | ===== | DDC CLOCK(SCL) |
| PIN 11 | PIN 22 | ===== | TMDS CLOCK SHIELD |
| PIN 12 | PIN 24 |  | TMDS CLOCK- |
| PIN 10 | PIN 23 |  | TMDS CLOCK+ |
| PIN 8 | PIN 19 | ===== | TMDS DATA 0 SHIELD |
| PIN 9 | PIN 17 |  | TMDS DATA 0- |
| PIN 7 | PIN 18 |  | TMDS DATA 0+ |
| PIN 5 | PIN 11 | ===== | TMDS DATA 1 SHIELD |
| PIN 6 | PIN 9 |  | TMDS DATA 1- |
| PIN 4 | PIN 10 |  | TMDS DATA 1+ |
| PIN 2 | PIN 3 | ===== | TMDS DATA 2 SHIELD |
| PIN 3 | PIN 1 |  | TMDS DATA 2- |
| PIN 1 | PIN 2 |  | TMDS DATA 2+ |
| HDMI | DVI-D | COLOR | CABLE FUNCTION |

| ITEM | DESCRIPTION | QTY. |
|------|------------------------------------|------|
| D | HDMI PLUG ASSY' | 1 |
| C | DVI THUMB SCREW | 2 |
| B | DVI_D SINGLE CHANNEL G/F CONNECTOR | 1 |
| A | DVI SINGLE LINK CABLE (SEE TABLE) | 1 |

| | | | | | | | | |
|---------------------------------------|--------------------|---|---|---|--|--|---|----------------------|
| EC NO. C DRWN: CHK: APPR: | DESCRIPTION REV | QUALITY SYMBOLS MAJOR ▼ = 0 CRITICAL ▽ = 5 | GENERAL TOLERANCES: (UNLESS SPECIFIED) | SCALE N.S.T <input checked="" type="checkbox"/> mm <input type="checkbox"/> INCH | DESIGN UNITS <input checked="" type="checkbox"/> mm <input type="checkbox"/> INCH | <input checked="" type="checkbox"/> THIRD ANGLE PROJECTION | <input type="checkbox"/> mm INCH <input type="checkbox"/> INCH mm <input checked="" type="checkbox"/> mm ONLY | SHT REV |
| | | 4 PLACES ±0. ±. 3 PLACES ±0. ±. 2 PLACES ±0. ±. 1 PLACE ±0. ±. | mm INCH mm INCH | DRAWN BY & DATE Louis Chen 03/11/17 | TITLE: HDMI(M) TO DVI-D(M) CABLE ASS'Y | | | REVISION ON CAD ONLY |
| | | ANGULAR: ± ° | CHECKED BY & DATE Teddy Kan 03/11/17 | APPROVED BY & DATE Boron Chen 03/11/17 | | | MOLEX INCORPORATED | |
| | | CAD FILENAME S88768AA.S02 | MATERIAL NO. SEE TABLE | DRAWING NO. SD-88768-001 | SHEET NO. 2 OF 2 | SIZE A4 | | |

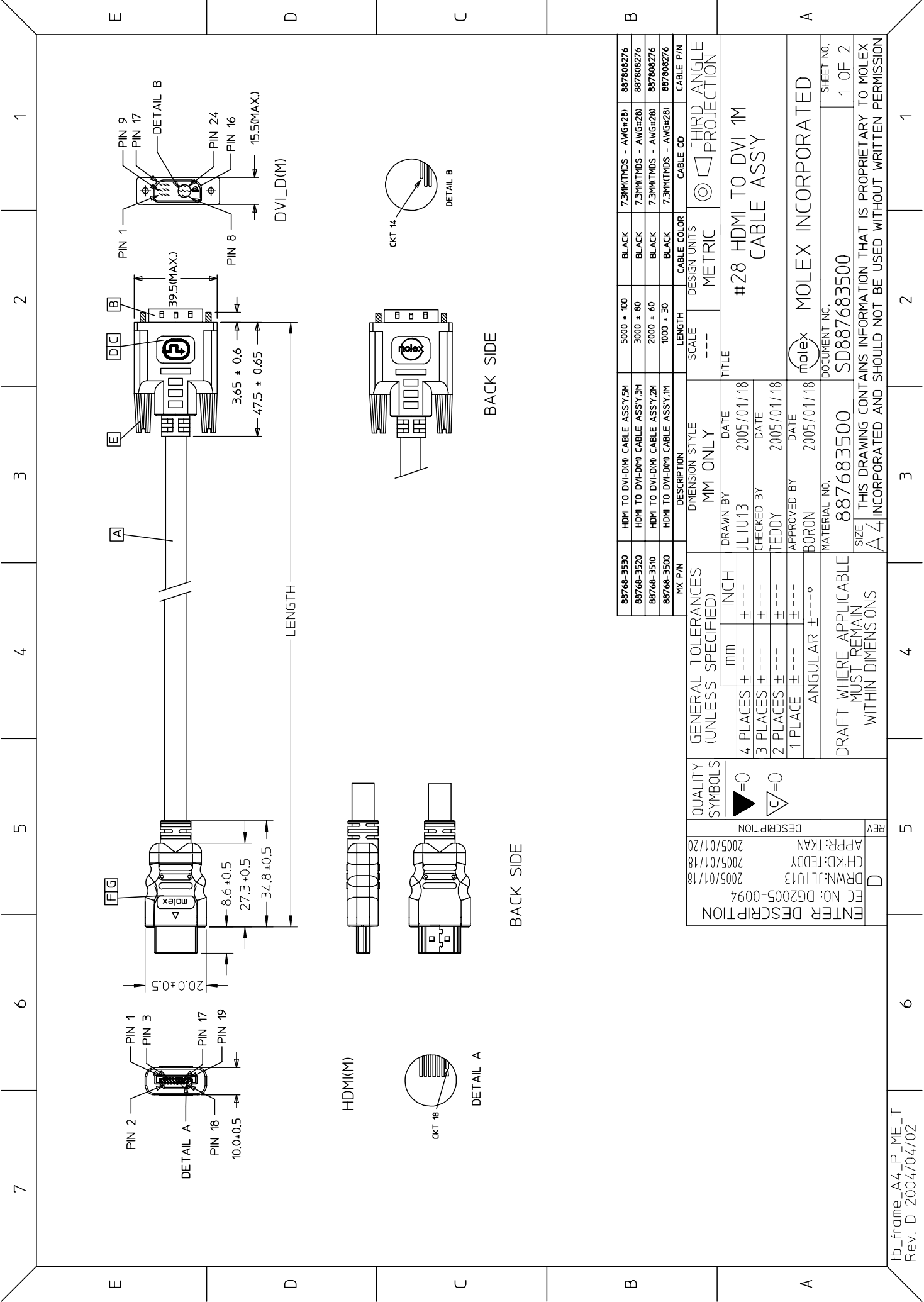
E

D

C

B

A



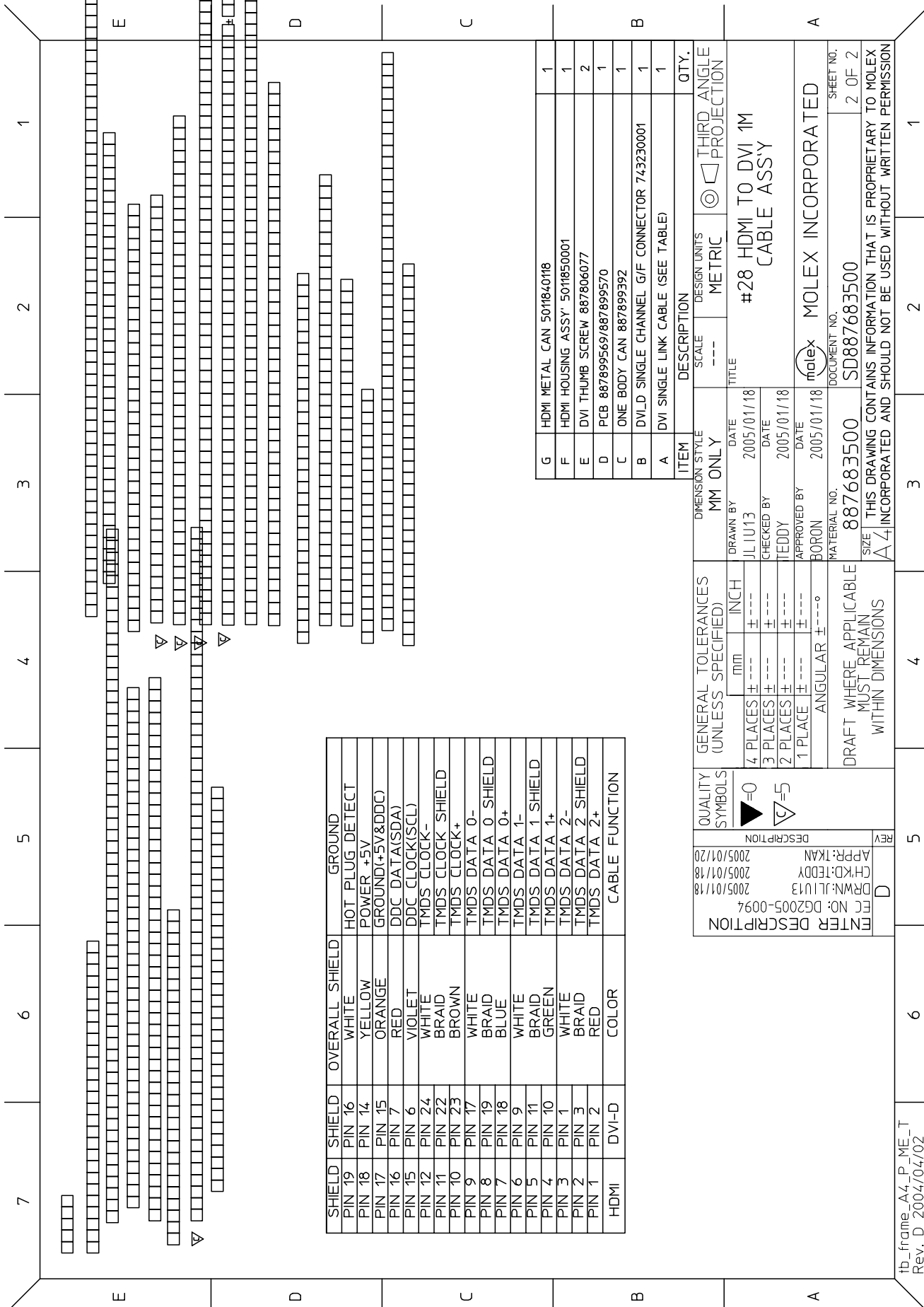
| | | | | | |
|------------|--------------------------------|------------|-------------|---------------------|-----------|
| 88768-3530 | HDMI TO DVI-D(M) CABLE ASSY,5M | 5000 ± 100 | BLACK | 7.3MM(TMS - AWG#28) | 887808276 |
| 88768-3520 | HDMI TO DVI-D(M) CABLE ASSY,3M | 3000 ± 80 | BLACK | 7.3MM(TMS - AWG#28) | 887808276 |
| 88768-3510 | HDMI TO DVI-D(M) CABLE ASSY,2M | 2000 ± 60 | BLACK | 7.3MM(TMS - AWG#28) | 887808276 |
| 88768-3500 | HDMI TO DVI-D(M) CABLE ASSY,1M | 1000 ± 30 | BLACK | 7.3MM(TMS - AWG#28) | 887808276 |
| MX P/N | DESCRIPTION | LENGTH | CABLE COLOR | CABLE OD | CABLE P/N |

| | | | | | |
|--|-----|---------|-------|--------------|------------------------|
| GENERAL TOLERANCES (UNLESS SPECIFIED) | | MM ONLY | SCALE | DESIGN UNITS | THIRD ANGLE PROJECTION |
| 4 PLACES ± | mm | INCH | --- | METRIC | |
| 3 PLACES ± | --- | --- | --- | --- | |
| 2 PLACES ± | --- | --- | --- | --- | |
| 1 PLACE ± | --- | --- | --- | --- | |
| ANGULAR ± | | --- | --- | --- | |
| DRAFT WHERE APPLICABLE MUST REMAIN WITHIN DIMENSIONS | | | | | |

| | | |
|-----------------|---------------------|-----|
| QUALITY SYMBOLS | DESCRIPTION | REV |
| ▶=0 | ENTER DESCRIPTION | D |
| ∇=0 | FCC NO: DG2005-0094 | |
| | DRWN: JLIU13 | |
| | CHKD: TEDDY | |
| | APPR: TKAN | |
| | 2005/01/18 | |
| | 2005/01/20 | |

| | | | |
|---|--|--------------|-------------------------------|
| DIMENSION STYLE | | DATE | TITLE |
| MM ONLY | | 2005/01/18 | #28 HDMI TO DVI 1M CABLE ASSY |
| DRAWN BY | | DATE | |
| JLIU13 | | 2005/01/18 | |
| CHECKED BY | | DATE | |
| TEDDY | | 2005/01/18 | |
| APPROVED BY | | DATE | |
| BORON | | 2005/01/18 | |
| MATERIAL NO. | | DOCUMENT NO. | SHEET NO. |
| 887683500 | | SD887683500 | 1 OF 2 |
| THIS DRAWING CONTAINS INFORMATION THAT IS PROPRIETARY TO MOLEX INCORPORATED AND SHOULD NOT BE USED WITHOUT WRITTEN PERMISSION | | | |

| | | | |
|--------------------|--|---|--|
| MOLEX INCORPORATED | | 1 | |
| 2 | | 3 | |
| 4 | | 5 | |
| 6 | | 7 | |



| SHIELD | SHIELD | OVERALL SHIELD | GROUND |
|--------|--------|----------------|--------------------|
| PIN 19 | PIN 16 | WHITE | HOT PLUG DETECT |
| PIN 18 | PIN 14 | YELLOW | POWER +5V |
| PIN 17 | PIN 15 | ORANGE | GROUND(+5V&DDC) |
| PIN 16 | PIN 7 | RED | DDC DATA(SDA) |
| PIN 15 | PIN 6 | VIOLET | DDC CLOCK(SCL) |
| PIN 12 | PIN 24 | WHITE | TMDS CLOCK- |
| PIN 11 | PIN 22 | BRAID | TMDS CLOCK SHIELD |
| PIN 10 | PIN 23 | BROWN | TMDS CLOCK+ |
| PIN 9 | PIN 17 | WHITE | TMDS DATA 0- |
| PIN 8 | PIN 19 | BRAID | TMDS DATA 0 SHIELD |
| PIN 7 | PIN 18 | BLUE | TMDS DATA 0+ |
| PIN 6 | PIN 9 | WHITE | TMDS DATA 1- |
| PIN 5 | PIN 11 | BRAID | TMDS DATA 1 SHIELD |
| PIN 4 | PIN 10 | GREEN | TMDS DATA 1+ |
| PIN 3 | PIN 1 | WHITE | TMDS DATA 2- |
| PIN 2 | PIN 3 | BRAID | TMDS DATA 2 SHIELD |
| PIN 1 | PIN 2 | RED | TMDS DATA 2+ |
| HDMI | DVI-D | COLOR | CABLE FUNCTION |

| ITEM | DESCRIPTION | SCALE | DESIGN UNITS | THIRD ANGLE PROJECTION | QTY. |
|------|--|-------|--------------|------------------------|------|
| G | HDMI METAL CAN 501840118 | --- | METRIC | | 1 |
| F | HDMI HOUSING ASSY' 5011850001 | --- | METRIC | | 1 |
| E | DVI THUMB SCREW 887806077 | --- | METRIC | | 2 |
| D | PCB 887899569/887899570 | --- | METRIC | | 1 |
| C | ONE BODY CAN 887899392 | --- | METRIC | | 1 |
| B | DVI-D SINGLE CHANNEL G/F CONNECTOR 743230001 | --- | METRIC | | 1 |
| A | DVI SINGLE LINK CABLE (SEE TABLE) | --- | METRIC | | 1 |

| GENERAL TOLERANCES (UNLESS SPECIFIED) | QUALITY SYMBOLS | DESCRIPTION |
|--|-----------------|--|
| 4 PLACES ±--- INCH | | DATE 2005/01/18 |
| 3 PLACES ±--- INCH | | CHECKED BY TEDDY |
| 2 PLACES ±--- INCH | | APPROVED BY BORON |
| 1 PLACE ±--- INCH | | DATE 2005/01/18 |
| ANGULAR ±---° | | MATERIAL NO. 887683500 |
| DRAFT WHERE APPLICABLE MUST REMAIN WITHIN DIMENSIONS | | DOCUMENT NO. SD887683500 |
| | | SIZE THIS DRAWING CONTAINS INFORMATION THAT IS PROPRIETARY TO MOLEX INCORPORATED AND SHOULD NOT BE USED WITHOUT WRITTEN PERMISSION |

| ITEM | DESCRIPTION | SCALE | DESIGN UNITS | THIRD ANGLE PROJECTION | QTY. |
|------|--|-------|--------------|------------------------|------|
| G | HDMI METAL CAN 501840118 | --- | METRIC | | 1 |
| F | HDMI HOUSING ASSY' 5011850001 | --- | METRIC | | 1 |
| E | DVI THUMB SCREW 887806077 | --- | METRIC | | 2 |
| D | PCB 887899569/887899570 | --- | METRIC | | 1 |
| C | ONE BODY CAN 887899392 | --- | METRIC | | 1 |
| B | DVI-D SINGLE CHANNEL G/F CONNECTOR 743230001 | --- | METRIC | | 1 |
| A | DVI SINGLE LINK CABLE (SEE TABLE) | --- | METRIC | | 1 |