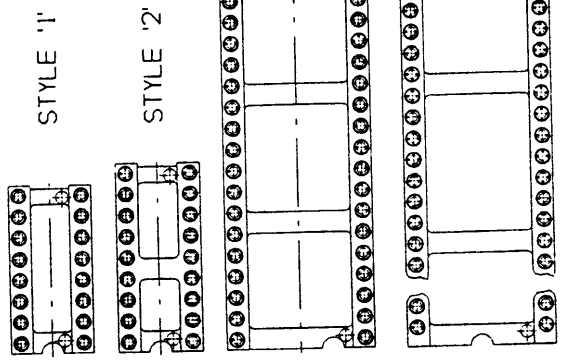
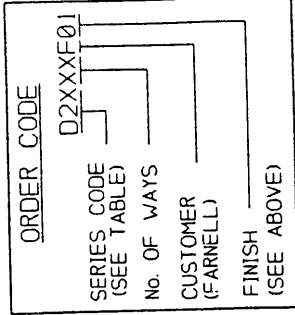


**SPECIFICATIONS:**  
 INSERTION FORCE - 1.8N (0.43mm Ø GAUGE)  
 WITHDRAWAL FORCE - 0.9N (0.43mm Ø GAUGE)  
 MECHANICAL LIFE - 100 CYCLES MIN.  
 RATED CURRENT - 1 AMP  
 CONTACT RESISTANCE - 10 MILLIOHMS MAXIMUM  
 INSULATION RESISTANCE - 1000V RMS MIN  
 DIELECTRIC STRENGTH - 1000V RMS MIN  
 OPERATING TEMPERATURE - -55°C TO 125°C

MOULDING: 30% GLASS FILLED POLYESTER (UL94V-0)  
 MATERIAL - BLACK  
 FINISH - BLACK



FARNELL PART No.	HARWIN PART No.	No. OF WAYS	STYLE	DIM 'A'	DIM 'B'	DIM 'C'	DIM 'D'
741-073	D2806F01	06	1	7.6	5.08	7.62	10.02
741-085	D2808F01	08	1	10.1	7.62	7.62	10.02
741-097	D2814F01	14	1	17.7	15.24	7.62	10.02
741-103	D2816F01	16	1	20.3	17.78	7.62	10.02
741-115	D2818F01	18	2	22.8	20.32	7.62	10.02
741-127	D2820F01	20	2	25.3	22.86	7.62	10.02
741-139	D2922F01	22	2	27.8	25.4	7.62	10.02
741-152	D2822F01	22	2	27.8	25.4	10.16	12.6
741-176	D2824F01	24	2	30.4	27.94	15.24	17.64
741-140	D2924F01	24	2	30.4	27.94	7.62	10.02
741-164	D2724F01	24	2	30.4	27.94	10.16	12.6
739-509	D2928F01	28	2	35.5	33.02	7.62	10.02
741-188	D2828F01	28	2	35.5	33.02	15.24	17.64
741-190	D2832F01	32	2	40.6	38.1	15.24	17.64
741-206	D2840F01	40	3	50.8	48.26	15.24	17.64
741-218	D2948F01	48	3	60.9	58.42	15.24	17.64
741-360	D2864F01	64	4	81.2	78.74	22.86	25.4

STYLE '3'

3	121196	C/N
2	041096	
1	308696	
A	250796	

ISS. DATE: 8/8  
 APPROVED: [Signature]  
 CHECKED: [Signature]  
 DRAWN: A LIOTTA  
 CUSTOMER REF.  
 ASSEMBLY DRG.

TOLERANCES

X - ±1mm  
 XX - ±0.25mm  
 XXX - ±0.10mm  
 XXXX - ±0.01mm  
 ANGLES - ±1°  
 UNLESS STATED

MATERIAL: SEE ABOVE  
 FINISH: SEE ABOVE  
 S./AREA: mm²

TITLE: DIL IC SOCKET OPEN FRAME

DRAWING NUMBER: D2XXXXF01

SHT 2 OF 2



HARWIN INC U.S.A. TEL: (812) 285 0855 FAX: 0852 274010  
 HARWIN PLC UK. TEL: 01705 370451 FAX: 01705 370450  
 HARWIN PTE SINGAPORE TEL: 65 7794909 FAX: 65 77030681  
 HARWIN CONNECTORS KOREA TEL: 822 521 0747 FAX: 822 521 0740

741206 \*

**COMPONENT SPECIFICATION****ROUND PIN I.C. SOCKETS**

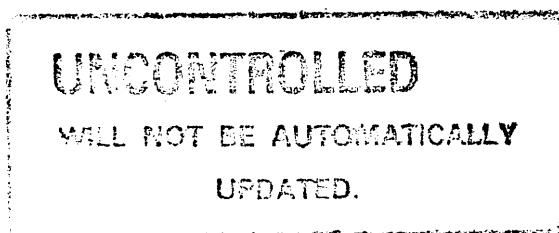
FEBRUARY 1997

**CONTENTS:**

SECTION	TITLE	PAGE
1	Description of Connector and Intended Application	2
2	Marking of Connector and/or Package	2
3	Rating	3
Appendix 1	Gauges	4
Appendix 2	Contact insertion depth	5

**APPENDICES NOTES:**

1. Third angle projection is used where projected views are shown.
2. All dimensions are in millimetres.
3. For explanation of dimensions, etc. see BS308.
4. Unless otherwise stated, all dimensions are maxima.



PREPARED BY: <i>Wendy Bone</i>	<u>ISSUE</u>	<u>C/NOTE</u>	<u>DATE</u>
	01	---	20.01.86
APPROVED BY: <i>Paul</i>	02	988	12.06.86
	03	1166	15.10.87
AUTHORISED BY: <i>B. L. Comer</i>	04	1567	30.01.90
	05	1682	07.08.90
	06	1838	10.06.91
	07	1881	02.09.91
	08	1937	12.02.92
	09	2014	01.06.92
	10	2429	05.10.93
	11	3398	08.07.96
	12	3773	27.02.97

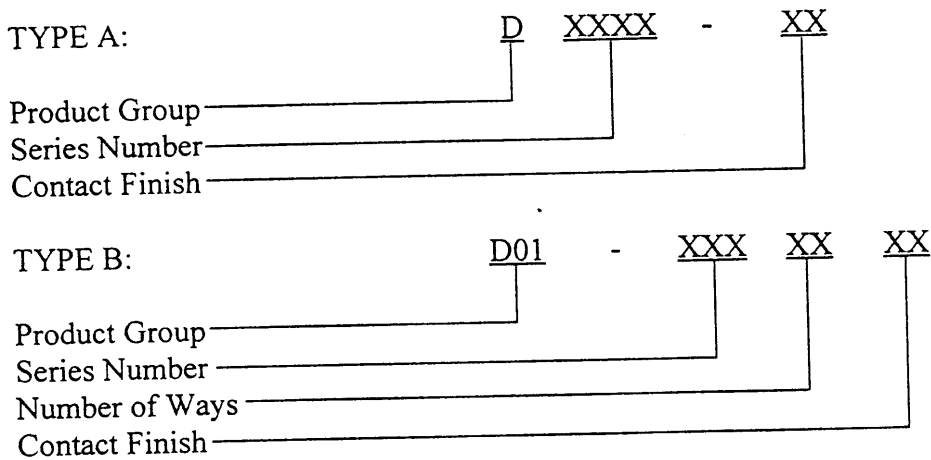
# COMPONENT SPECIFICATION ROUND PIN I.C. SOCKETS

## 1. DESCRIPTION OF COMPONENT AND INTENDED APPLICATION.

A range of round pin and wire-wrap I.C. sockets intended to accommodate integrated circuits and other components having connection pins. Machined female contacts with gold-plated finish are housed in glass-filled polyester mouldings. Contact surfaces are tin-plated through load solder and wire-wrap terminations. Wire-wrap is available in two types - two-level (9.9mm tails) and three-level (12.9mm tails).

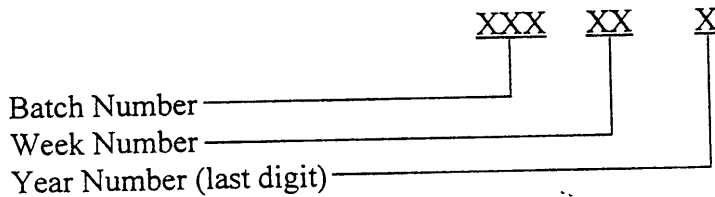
## 2. MARKING OF COMPONENT AND/OR PACKAGE (ORDER CODE).

The marking (order code) shall appear on the package and shall be of the following style:



For details of styles, numbers of ways and finishes see the appropriate drawing.

Batch Code shall appear on the package, and shall be of the following style:



The Batch Number is 001 to 999 repeated each week.

**COMPONENT SPECIFICATION**  
**ROUND PIN I.C. SOCKETS (continued)**

**3. RATINGS.**

**3.1. ELECTRICAL CHARACTERISTICS.**

Current per individual contact at an ambient temperature of 25°C .....	3A max
(When only one contact per connector is electrically loaded)	
Current per individual contact at an ambient temperature of 85°C .....	1A max
(When only one contact per connector is electrically loaded)	
Current per contact through all contacts at an ambient temperature of 25°C .....	1.5A max
Current per contact through all contacts at an ambient temperature of 85°C .....	250mA max
Creepage path contact-to-contact .....	0.7mm min
Air gap contact-to-contact .....	0.7mm min
Maximum contact resistance (initially) .....	15mΩ
Maximum contact resistance (after conditioning) .....	23mΩ
Minimum insulation resistance (initially) .....	1000MΩ
Minimum insulation resistance (hot after conditioning) .....	100MΩ
Capacitance - 1 contact to all other contacts, and the mounting plate/board, also between 2 adjacent contacts and all other contacts and mounting plate/board connected .....	1.5pf max

**3.2. ENVIRONMENTAL CHARACTERISTICS.**

Environmental classification .....	55/125/21
Low air pressure severity .....	300 mbar
Vibration severity .....	10 Hz to 2000 Hz at 0.75mm/10gn, duration 6 hours
Shock severity .....	100gn for 6ms
Acceleration severity .....	50gn
Bump severity .....	40gn 390m/s <sup>2</sup> , 4000 ±10 bumps

**3.3. MECHANICAL CHARACTERISTICS.**

Durability:	
01 and 05 finish .....	1000 operations
21 finish .....	250 operations
T6 finish .....	50 operations
High temperature, long term (current as in 3.1.) .....	1000 hours at 85°C
High temperature, short term (no electrical load) .....	250 hours at 125°C
Contact shell retention in moulding .....	20N min
Contact clip retention in shell:	
Minimum retention force contact clip from shell from a sample of 10 contacts may be 25N, providing the average of the sample is 37N minimum.	
Insertion and withdrawal forces, n = no. of contacts (using pin shown in Appendix A1.1):	
Maximum initial insertion force .....	5N x n
Minimum initial withdrawal force, after 3 insertions .....	0.5N x n

NOTE: Conditioning shall be defined as having 5 insertions and withdrawals following the initial measurements, the final measurements being taken on the fifth insertion and withdrawal.

Pin size - round: withdrawal = Ø0.46mm  
insertion = Ø0.46mm

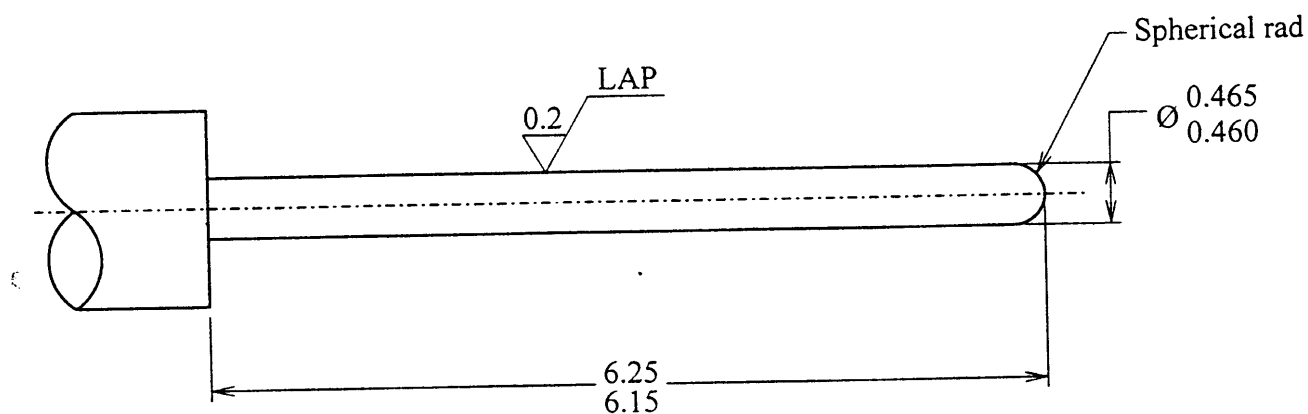
**COMPONENT SPECIFICATION**  
**ROUND PIN I.C. SOCKETS (continued)**

**APPENDIX 1 - GAUGES.**

**NOTES:**

1. Material = Steel to BS1407 or equivalent.
2. Gauging surfaces to be hardened/ground to 650 H.V.5 minimum.
3. These gauges to be used for testing fully assembled components only.
4. Ultimate wear limit of 0.005mm is allowable on gauging diameters.

**A1.1. SIZING GAUGE.**



**A1.2. HOLDING GAUGE (after conditioning)**

