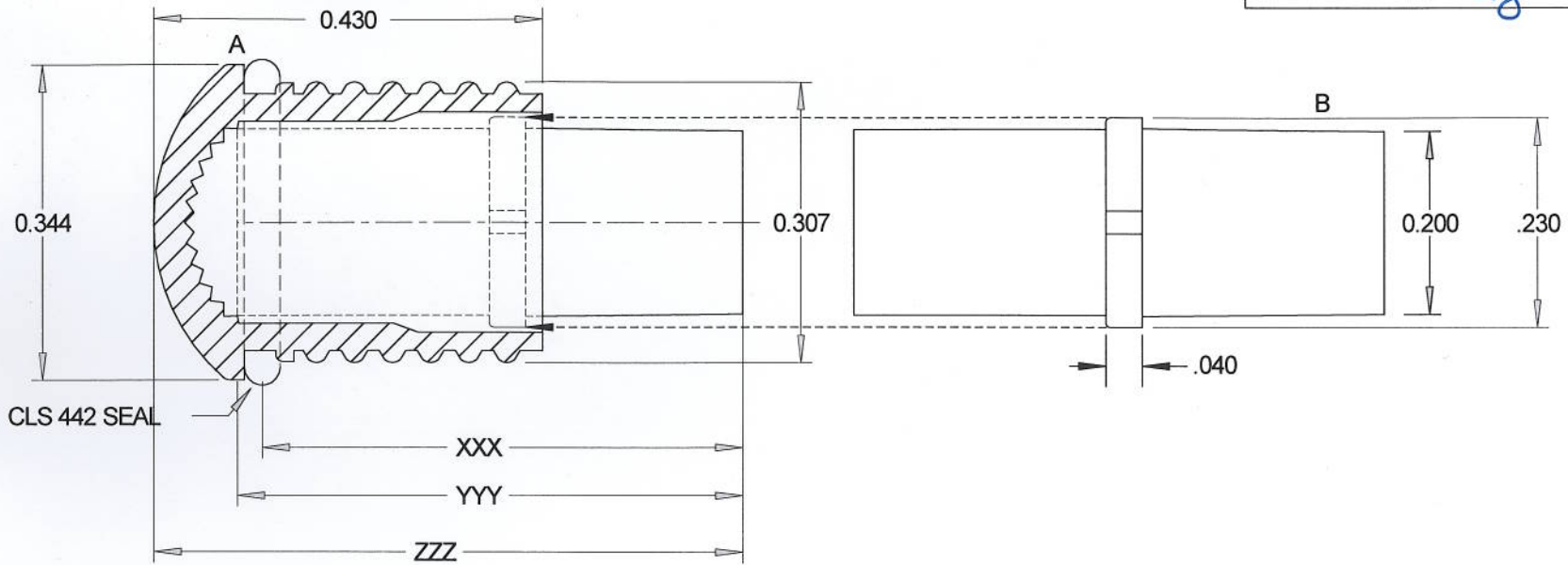


APPROVAL	DATE
<i>DZ</i>	2/10/09



ORDER CODE	LENGTH
XXX = 032	.320"
052	.520"
072	.720"
092	.92"
112	1.12"
132	1.32"
177	1.77"

YYY = LCV LENGTH
036 = .360"
056 = .560"
076 = .760"
096 = .960"
116 = 1.160"
136 = 1.360"
181 = 1.81"

ZZZ = OVERALL LENGTH
= .435"
= .635"
= .835"
= 1.03"
= 1.23"
= 1.44"
= 1.90"

BILL OF MATERIALS

ITEM	P/N	DESCRIPTION	COLOR	LENGTH / (QTY)
A	CMS 442 XTP	5mm THREADED MOISTURE SEALED LENS	XTP**	(1)
B	*LCV YYY CTP	5mm LITEPIPE	CLEAR	YYY* / (1)

*See Litepipe Length Table (YYY)

**See Lens Color Table (XTP)

STANDARD LENS COLORS	Color
XTP = RTP	RED
GTP	GREEN
ATP	AMBER
YTP	YELLOW
CTP	CLEAR
BTP	BLUE

REVISIONS			
NO	DESCRIPTION	DATE	BY
1	ADD LCS 177 DIMENSIONS	9/29/08	JG
2	MATCH ZZZ TO XXX	2/10/09	AZ
3			
4			
5			
6			

VCC P/N: LCS XXX XTP

VCC VISUAL COMMUNICATIONS COMPANY, INC.
 190 Bosstick Blvd, Ste. 101 San Marcos, California 92069 U.S.A.
 Phone (760) 560-1300 Fax (760) 560-1301 e-mail vccsales@vccite.com

TOLERANCES	SCALE	N/A	DATE	9/26/07	DRAWING NO.	REV.
DECIMAL .xxx, ±.004"; .xx, ±.015"	DIAMETER	.003 Max	DRAWN BY	SK	LMS XXX XTP	2
ANGLE ±.03'	RADI	.008 Max	CHK'D			