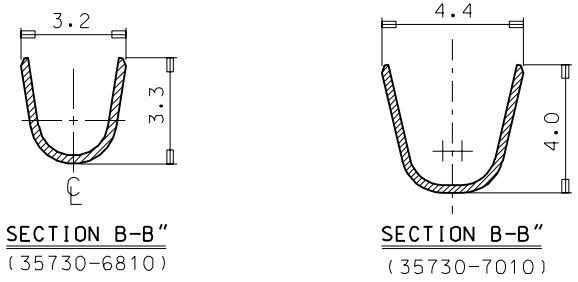
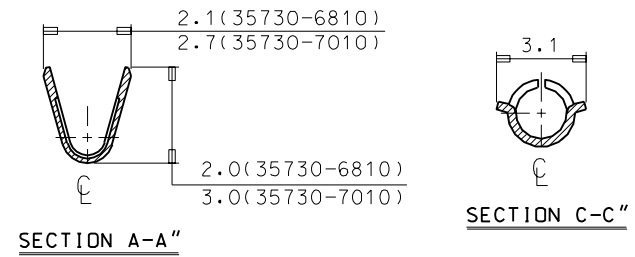
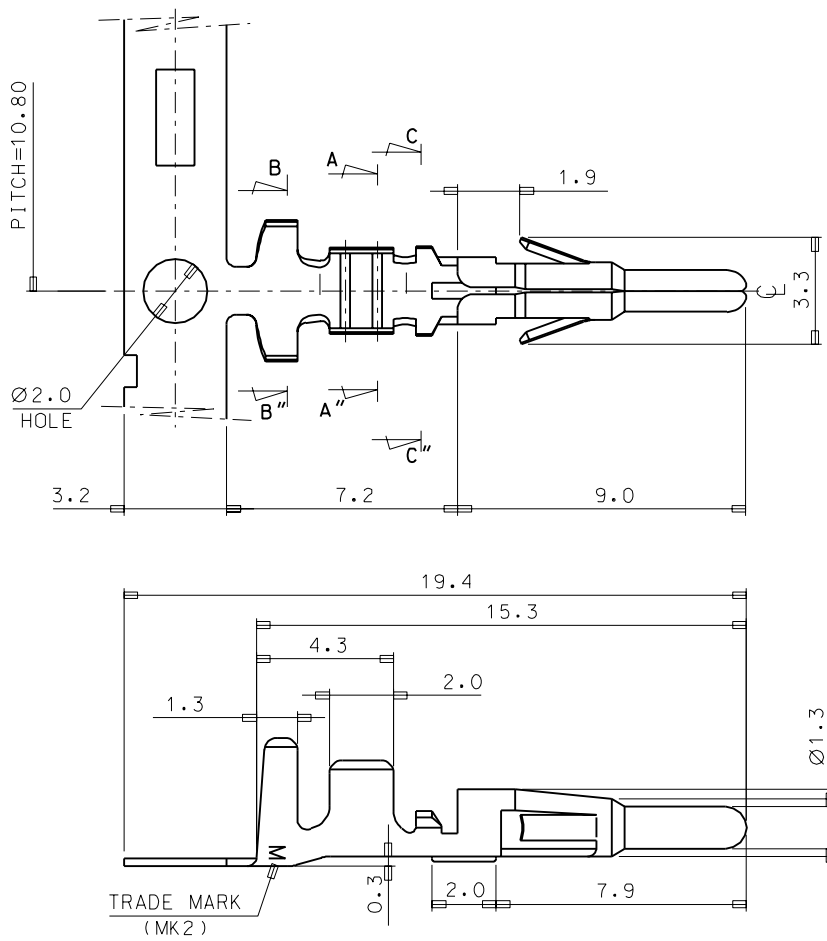


DWG. NO. SD-35730-001  
 PROJECT NO. SIMILAR ITEM  
 DO NOT SCALE DRAWING DIMENSION IN METRIC



ENG. NO.	MATERIAL NO.	WIRE RANG	INSUL. RANGE
35730-6810	357306810	AWG #26-#20	1.3-2.6
35730-7010	357307010	AWG #20-#16	1.9-3.4

- NOTES
1. MATERIAL: BRASS , 0.25THICKNESS
  2. PLATING: PRE-TIN PLATING
  3. MATING TERMINAL: 35730-6910/7110
  4. RECOMMENDED LENGTH OF WIRE STRIP IS 3.0-3.5

REVISED EC NO. KOR 1999-0120 DRAWN: H.-C. RHO 99.12.29 CHK: B.-K. CHOI APPR: C.-W. LEE	QUALITY SYMBOLS MAJOR CRITICAL	GENERAL TOLERANCES: (UNLESS SPECIFIED)		SCALE 7:1	DESIGN UNITS <input checked="" type="checkbox"/> mm <input type="checkbox"/> INCH	DIMENSIONS: <input type="checkbox"/> mm <input type="checkbox"/> INCH <input checked="" type="checkbox"/> mm ONLY	SHT REV
		4 PLACES ±0.     ±.	3 PLACES ±0.     ±.	2 PLACES ±0.20   ±.	1 PLACE ±0.30   ±.	DRAWN BY & DATE W. Y. YANG	
REV	DESCRIPTION MAJOR CRITICAL	ANGULAR: ± 1 °		CHECKED BY & DATE B.-K. CHOI		MOLEX INCORPORATED KOREA	SHEET NO. 1 OF 1
		DRAFT WHERE APPLICABLE MUST REMAIN WITHIN DIMENSIONS		APPROVED BY & DATE C.-W. LEE			

THIS DRAWING CONTAINS INFORMATION THAT IS PROPRIETARY TO MOLEX INCORPORATED AND SHOULD NOT BE USED WITHOUT WRITTEN PERMISSION.