

626-971

Subject : FRIWO Part No. 11.7907

Dear Ghazala

as requested please find attached a copy of the specification sheets for the above part No. Please note that we normally supply this part to you as a desktop PSU. The only difference between the two units are the bases e.g. Euro plug base & flat base for the desktop unit.

If I can be of any further assistance with this or any other matter please do not hesitate to contact me

Kind regards

Brian Feeney

Brian Documents 22 October, 1997

SOUTHERN SALES OFFICE WILLOWS BND, HULL GREEN, MATCHING GREEN, EBBW, SWITZLD

TEL: +44 (0) 1792 312041 FAX: +44 (0) 1792 312743

SOLE U.K. AGENT FOR FRIWO DEVICES SALES GROUP

EUROPE'S LEADING MANUFACTURER OF SMALL POWER SUPPLIES AND CHARGERS



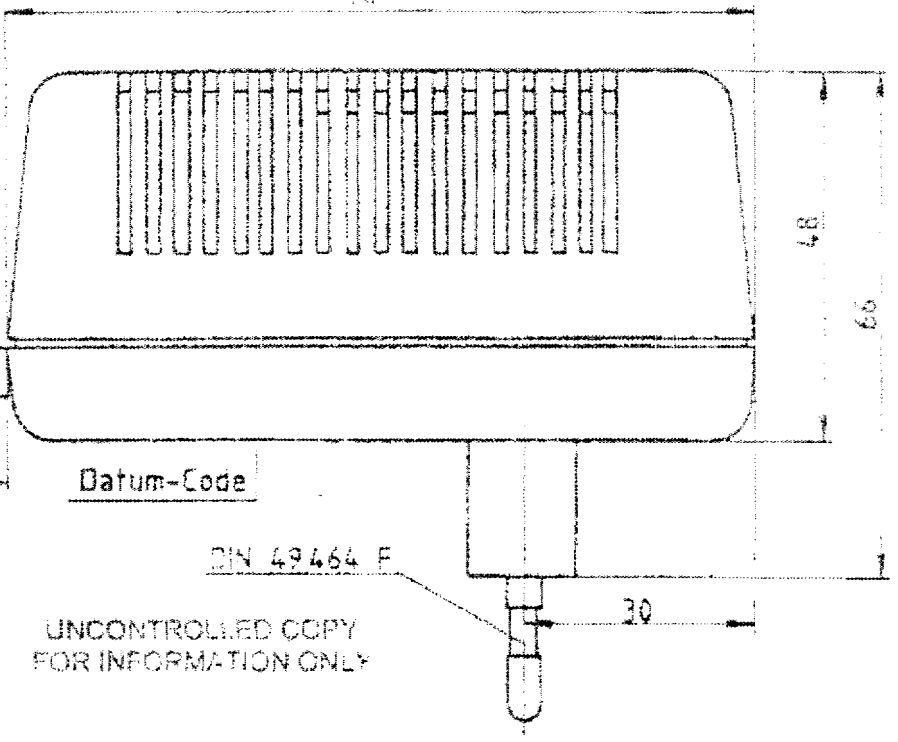
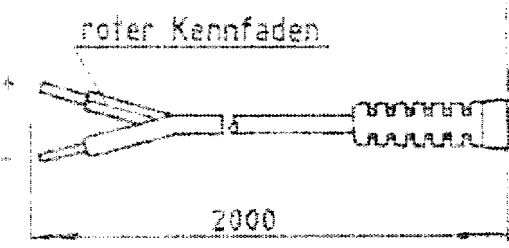
FRIWO

Liefervorschrift / Specification /
 Specifications de fourniture
 Steckernetzgerät Fa. FRIWO
 15 V ~ / 540mA

EDV-Nr. 163942
 GB 11. 7907
 000 - 00
 Blatt 1

Gehäuseausführung/Housing construction/

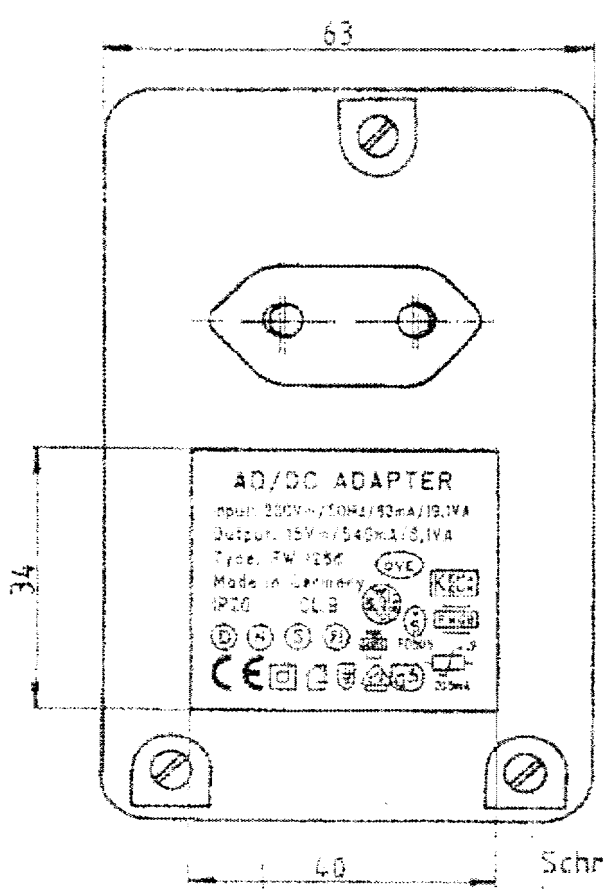
Execution du boîtier: 54/5
 Material/Material/Matériau:
 PPE-V1-125°C
 Farbe/Colour/Couleur:
 schwarz/black/noir



UNCONTROLLED COPY FOR INFORMATION ONLY

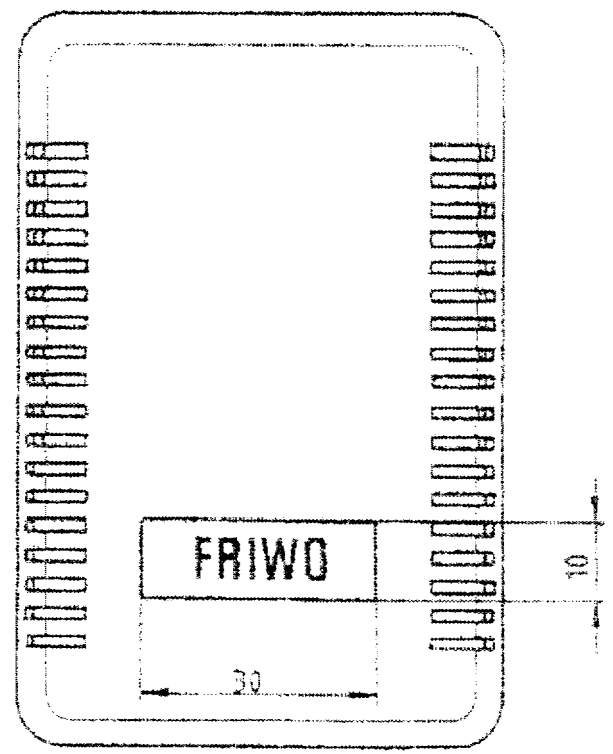
Ladeleitung: 11. 2816. 003 - 00
 Charging lead:
 Circuit d'alimentation:

Boden / Bottom / Fond



Bodenbeschriftung: 11.7907.001-03

Deckel / Cover / Couverture



Schriftfeld 0,3 vertieft
 Inscription field 0,3 deepened
 Champ d'inscription 0,3 en retrait

Liefervorschrift besteht aus		3	Blatt		Datum	Name
					22.01.95	Mätzold



Friemann & Wolf
Gerätebau GmbH
von - Liebig - Str. 11
W - 4412 Ostbevern
TEL: 02532 / 81-0
FAX: 02532 / 7550

Liefervorschrift /
Specification :

Sheet 1 of 1
EDV-Nr.: 1 16 39 071

11. 7907. 000 - 00

1.) Allgemeine Prüfbedingungen:
General test conditions:

- 1.1 Funktionstemp.: 0°C ... + 40°C 1.2 Lagertemperatur.: -40°C ... + 70°C
Operating temperature: Storage temperature:
- 1.3 Eingangsspannung: UE = 230 V ~ , ± 10 % , 50 Hz
Input voltage:
- 1.4 Hochspannungsprüfung: Eingang/Ausgang: 4.5kV / 50Hz / Is
High voltage test: input/Output:
- 1.5 Transformator: EJ 54
Transformer:

2.) Netzgerät: Ausgangsdaten bei Raumtemperatur an ohmscher Last
nach 2 Minuten .

Power supply: Output values at a room temperature with a non reactive load
after 2 minutes of switching on .

UE (V~)	Ausgang/Output:			Ausgang/Output:			Ausgang/Output:		
	Kennlinie: WU			Kennlinie:			Kennlinie:		
	IA (mA)	UA (V ~)	Ubr (mVeff)	IA (mA)	UA (V ~)	Ubr (mVeff)	IA (mA)	UA (V ~)	Ubr (mVeff)
253	5	≤ 16,125			≤			≤	
		= ± % ≤			= ± % ≤			= ± % ≤	
230		≤			≤			≤	
	540	= 15 ± 7,5% ≤ 50			= ± % ≤			= ± % ≤	
		≤			≤			≤	
		= ± % ≤			= ± % ≤			= ± % ≤	

3.) Verpackung/Packing:

UNCONTROLLED COPY
FOR INFORMATION ONLY

~~3.1 Einzelverpackung:~~ ~~Neutrale weiße Faltschachtel mit/ohne Aufdruck~~
~~Individual packaging:~~ ~~Plain white folding box with/without printing~~

3.2 Sammelverpackung: 36 Geräte je Karton ohne Aufdruck
Master packaging: 36 units per carton without printing

Index	Datum	Name	Erreicht	Datum	Name
				beabs. EWTN-E	07.01.93 Patzer
				beabs. EWTN-M	22.01.93 Matzold
				gepr. EWTN-E	25.1.93
				gepr. EWTN-M	

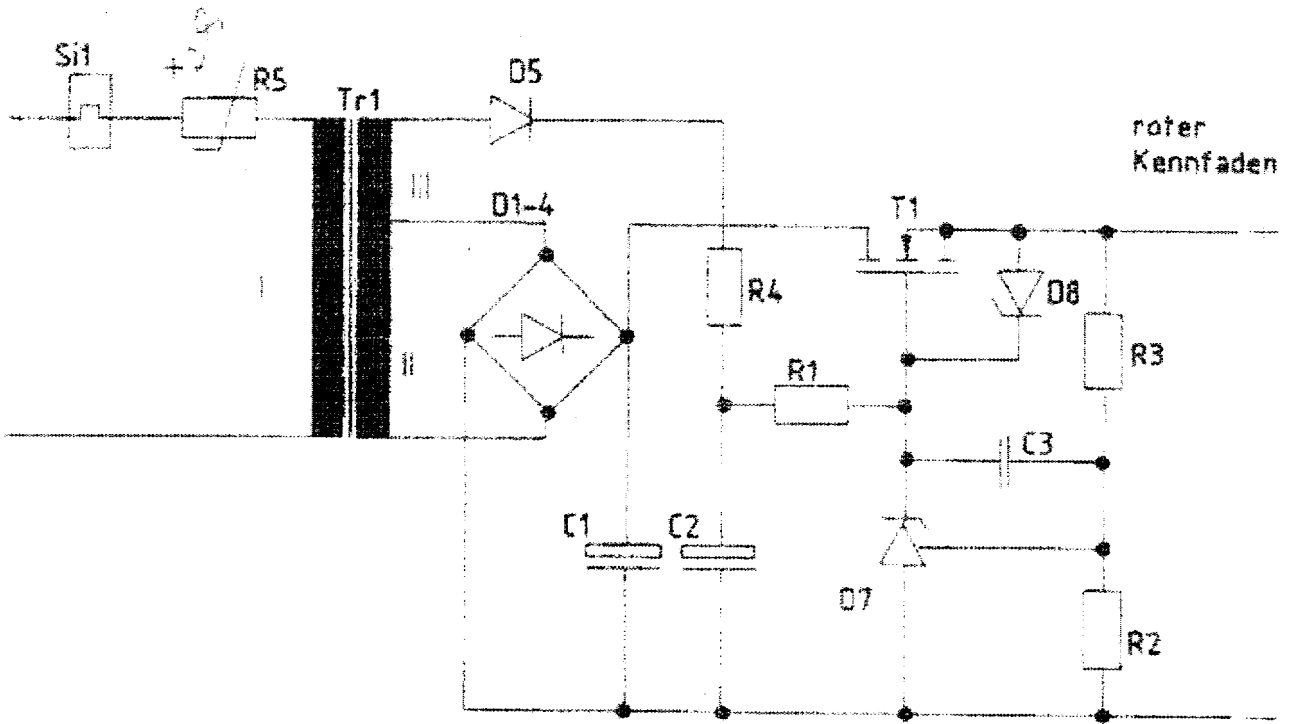
FRIWO

Friewohn & Wolf
 Gerätebau GmbH
 von - Liebig - Str. 11
 W - 4412 Ostbevern
 TEL: 02532 / 81-0
 FAX: 02532 / 7550

Liefervorschrift /
 Specification :
 11. 7907. 000 - 00

Blatt /
 Sheet 1 / 1
 EDV-Nr.: 16 39 471

Stromlaufplan / Circuit diagram



UNCONTROLLED COPY
 FOR INFORMATION ONLY

Index	Datum	Name	Erzähler	Datum	Name
				07.01.93	Patzer
				22.01.93	Matzold
				25.1.	