

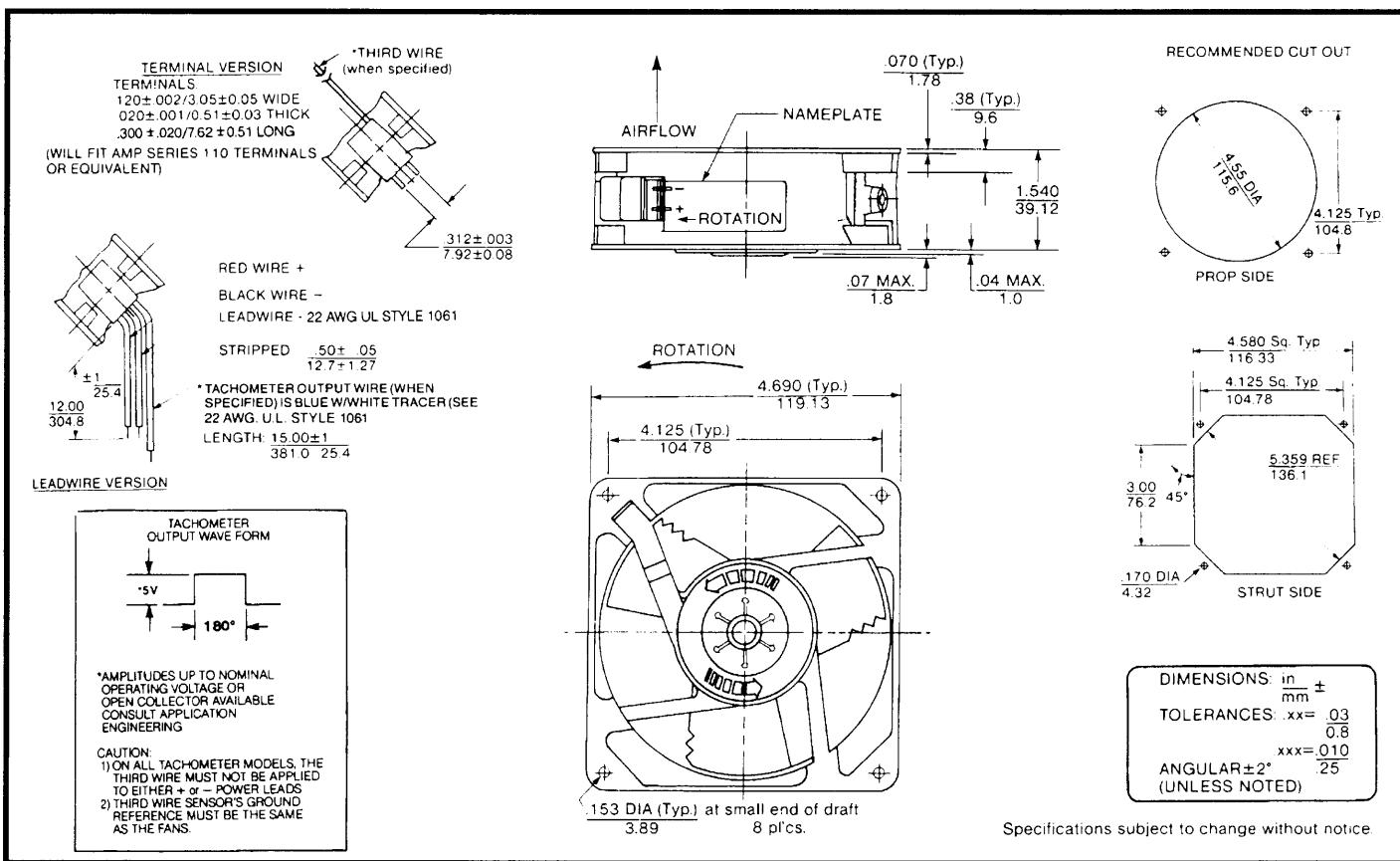
SPECIFICATIONS



Model Number: MD24B5-E2
Part Number: 039030

February 11, 2003

Mechanical Drawing:



Motor:

Nominal Voltage	= 24 vdc
Operating Voltage Range	= 12 - 28 vdc
Running Current	= 0.250 amps
Locked Rotor Current	= 0.750 amps
Running Power	= 6.0 watts
Average Speed	= 3100 rpm
Bearings	= Ball
Air Flow	= 110 CFM
Acoustic	= 50.0 dBA

Construction:
 Venturi: Die-Cast Zinc Alloy, Black
 Propeller: Plastic, Black, UL 94V-0

Life Expectancy:
 This fan is designed for continuous duty life of 83,000 hours at 40°C.

Agency Approved:
 UL, CUL, TUV

Additional Features:
 Brushless DC Motor
 Electronic Locked Rotor Protected
 Polarity Protected
 Automatic Restart Capability
 Operating Temperature: -10°C to 70°C
 Storage Temperature: -40°C to 85°C
 Environmental Type II coating

Tachometer:
 Output: 5 volt TTL
 Isolated: No
 Pulses per Rev.: 2

Termination:
 12" Lead wires, 22AWG, UL 1061
 Red - Fan Power, (+)
 Black - Fan Ground, (-)
 Blue/White - Tachometer, (Output)

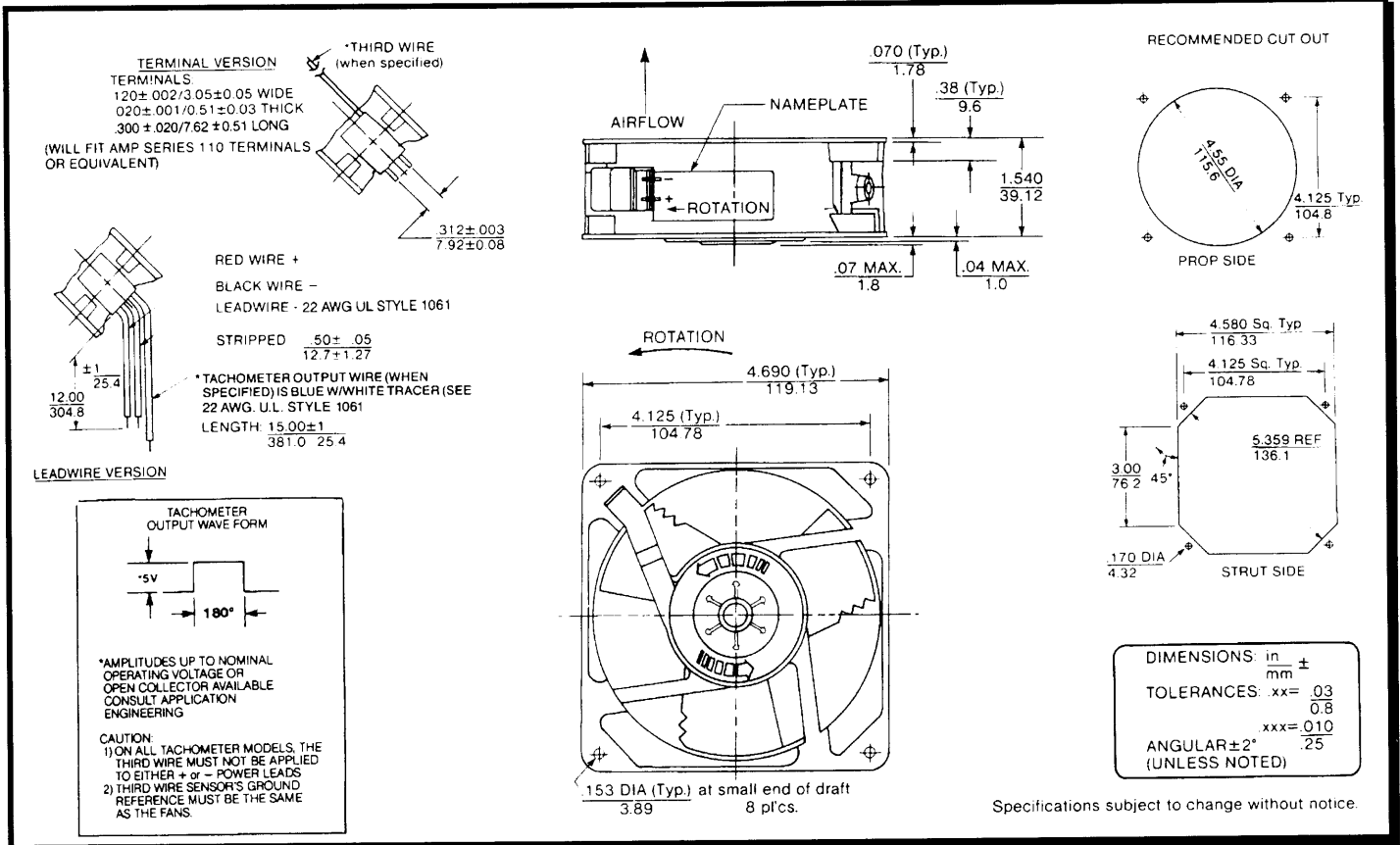
SPECIFICATIONS



Model Number: MD12B1
Part Number: 028865

June 23, 2003

Mechanical Drawing:



Motor:

Nominal Voltage	= 12 vdc
Operating Voltage Range	= 6 - 14vdc
Nominal Running Current	= 0.500 amps
Locked Rotor Current	= 1.650 amps
Running Power	= 6.0 watts
Average Speed	= 3330 rpm
Bearings	= Ball
Air Flow	= 110 CFM
Acoustic	= 50 dBA

Construction:

Venturi: Die-Cast Zinc Alloy, Black
 Propeller: Plastic, Black, UL 94V-0

Life Expectancy:

This fan is designed for continuous duty life of 83,000 hours at 40°C.

Additional Features:

- Brushless DC Motor
- Electronic Locked Rotor Protection
- Automatic Restart Capability
- Polarity Protected
- Operating Temperature -10°C to 70°C
- Storage Temperature -40°C to 85°C

Termination:

- 12" Lead wires, AWG 22, UL 1061
- Red - Fan Power (+)
- Black - Fan Ground (-)

Agency Approvals:

UL, CSA, TUV

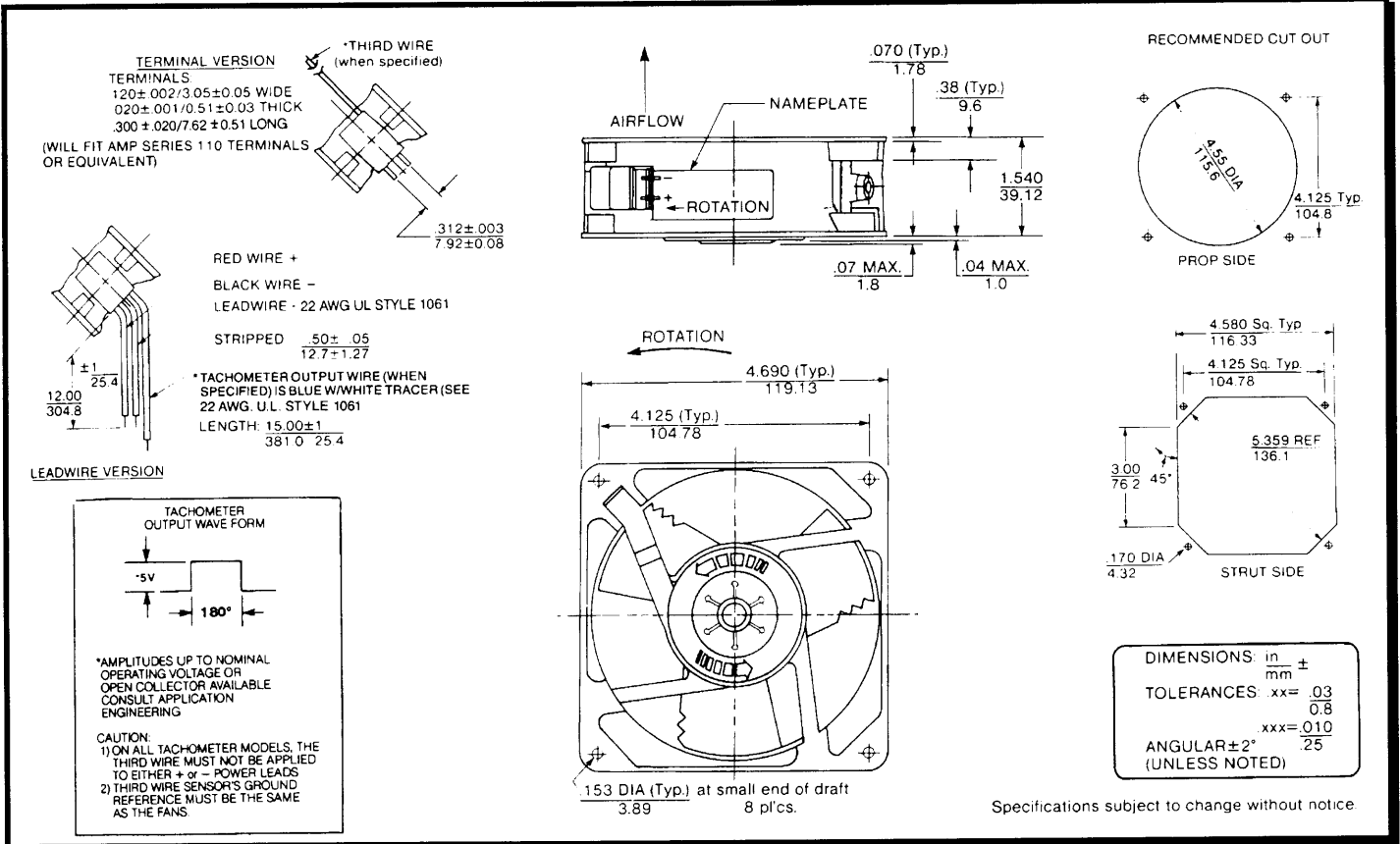
SPECIFICATIONS



Model Number: MD24B1
Part Number: 028866

June 25, 2003

Mechanical Drawing:



Motor:

Nominal Voltage	= 24 vdc
Operating Voltage Range	= 12 - 28 vdc
Running Current	= 0.250 amps
Locked Rotor Current	= 0.750 amps
Running Power	= 6.0 watts
Average Speed	= 3100 rpm
Bearings	= Ball
Air Flow	= 110 CFM

Construction:
 Venturi: Die-Cast Zinc Alloy, Black
 Propeller: Plastic, Black, UL 94V-0

Life Expectancy:
 This fan is designed for continuous duty life of 83,000 hours at 40°C.

Additional Features:
 Brushless DC Motor
 Locked Rotor Protection
 Polarity Protected
 Automatic Restart Capability
 Operating Temperature: -10°C to 70°C
 Storage Temperature: -40°C to 85°C

Termination:
 12" Lead wires, 22 AWG, UL 1061
 Red = Power (+)
 Black = Ground (-)

Agency Approvals:
 UL, CSA, TUV, CE

Muffin® XL DC

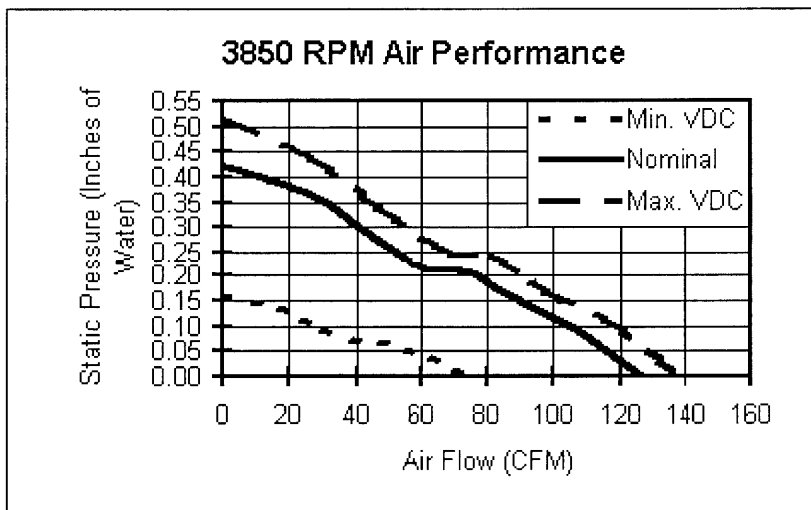
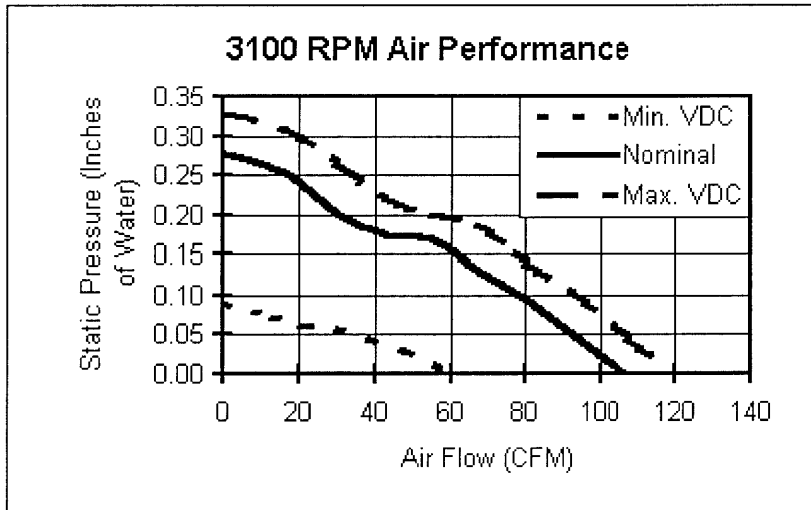
Brushless DC Tubeaxial Fan

FEATURES:

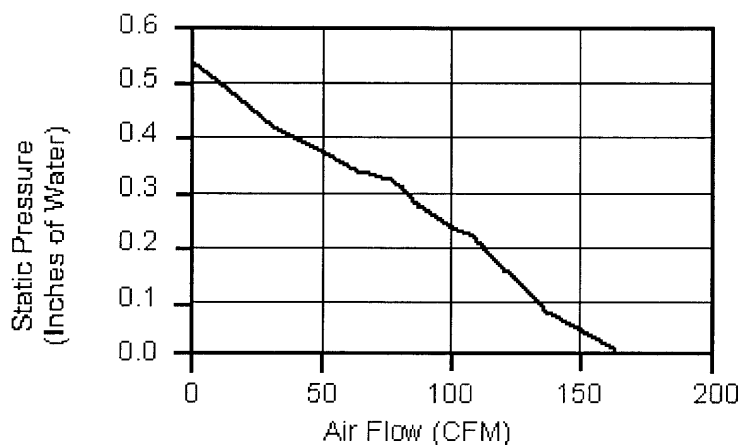
- Size: 4.69" sq. x 1.54" deep (119.1mm x 39.1mm)
- Air Flow: 110 to 150 CFM
- Voltage: 12, 24, & 48 VDC
- Operating Temperature Range: -10°C to +70°C
- Storage Temperature Range: -40°C to +85°C
- Feathered Edge™ for Lower Noise
- Ball and Sleeve Bearings
- 12" Leadwires, 22 AWG, or Terminals
- Weight: 21.5 oz (.61 Kg)



PERFORMANCE:



4700 RPM Air Performance



SPECIFICATIONS:

Model No.	Part No.	VDC	Watts	Running Current (Amps)	Locked Rotor Current (Amps)	RPM	CFM	dBA	Features
MD12A1	030040	12	6.0	0.500	1.650	3100	110	50.0	1, 4
MD12A2	030043	12	6.0	0.500	1.650	3100	110	50.0	2, 4
MD12B1	028865	12	6.0	0.500	1.650	3100	110	50.0	1, 3
MD12B1TDN	031698	12	6.0	0.500	1.650	3100	110	50.0	1, 3, 8
MD12B2	028868	12	6.0	0.500	1.650	3100	110	50.0	2, 3
MD12B3	032036	12	6.0	0.500	1.650	3100	110	50.0	1, 3
MD12B5	028885	12	6.0	0.500	1.650	3100	110	50.0	1, 3, 5
MD12B9	028888	12	6.0	0.500	1.650	3100	110	50.0	2, 3, 5
MD24A1	030041	24	6.0	0.250	0.750	3100	110	50.0	1, 4
MD24A2	030044	24	6.0	0.250	0.750	3100	110	50.0	2, 4
MD24B1	028866	24	6.0	0.250	0.750	3100	110	50.0	1, 3
MD24B1QDN	032481	24	6.0	0.250	0.750	3100	110	50.0	1, 3, 8
MD24B1TDN	031645	24	6.0	0.250	0.750	3100	110	50.0	1, 3, 8
MD24B2	028869	24	6.0	0.250	0.750	3100	110	50.0	2, 3
MD24B3	032037	24	6.0	0.250	0.750	3100	110	50.0	1, 3
MD24B4	032040	24	6.0	0.250	0.750	3100	110	50.0	2, 3
MD24B5	028886	24	6.0	0.250	0.750	3100	110	50.0	1, 3, 5
MD24B9	028889	24	6.0	0.250	0.750	3100	110	50.0	2, 3, 5
MD24K4	031762	24	13.2	0.550	1.340	3850	125	55.0	2, 3
MD28B1	030002	28	6.5	0.230	1.120	3100	110	50.0	1, 3
MD28B5	032105	28	6.5	0.230	1.120	3100	110	50.0	1, 3, 5
MD48A1	030042	48	5.8	0.120	0.400	3100	110	50.0	1, 4
MD48A1QDN	030645	48	5.8	0.120	0.400	3100	110	50.0	1, 4, 8
MD48A2	030045	48	5.8	0.120	0.400	3100	110	50.0	2, 4
MD48B1	028867	48	5.8	0.120	0.400	3100	110	50.0	1, 3
MD48B1TDL	030780	48	5.8	0.120	0.400	3100	110	50.0	1, 3, 8
MD48B1TDN	031612	48	5.8	0.120	0.400	3100	110	50.0	1, 3, 8
MD48B2	028870	48	5.8	0.120	0.400	3100	110	50.0	2, 3
MD48B2NDN	030917	48	5.8	0.120	0.400	3100	110	50.0	2, 3, 8
MD48B2QDN	030860	48	5.8	0.120	0.400	3100	110	50.0	2, 3, 8
MD48B3	032038	48	5.8	0.120	0.400	3100	110	50.0	1, 3
MD48B4	032041	48	5.8	0.120	0.400	3100	110	50.0	2, 3
MD48B5	028887	48	5.8	0.120	0.400	3100	110	50.0	1, 3, 5
MD48B9	028890	48	5.8	0.120	0.400	3100	110	50.0	2, 3, 5

MD60B2	031801	60	6.0	0.100	0.300	3100	110	50.0	2, 3
--------	--------	----	-----	-------	-------	------	-----	------	------

[Click here to view diagram - MuffinXLDC.gif \(77K\)](#)

FEATURES:

1. Leadwires
2. Terminals
3. Ball Bearings
4. Sleeve Bearings
5. Tachometer Output
6. Thermal Speed Control
7. Programmable Speed Control
8. Fan Performance Sensor

MOTOR:

- Brushless Electronic Commutation Provided By Dependable Solid State Circuitry
- Ball Bearings
- 100% Dielectric Tested
- Electronic Locked Rotor Protection (PTC)
- Polarity Protected

CONSTRUCTION:

- Venturi - Die Cast Zinc Alloy, Black
- Propeller - Polypropylene, Black, UL94V-0

LIFE EXPECTANCY:

- L10 Data - 83,000 hrs, @ 40°C

EMI:

- These products have been tested and complies with FCC Part 15 Class B of:

EN55022 - 1994 Class B Conducted Emissions.

EN55022 - 1995 Class B Radiated Emissions.

OPTIONS:

- Tachometer Output - square wave output equal to 1 pulse per revolution
- Fan Performance Sensors (FPS)
- Customized Harness Assemblies
- Threaded Mounting Holes Available

 [Back to DC Axial Fans Menu](#)

[Home](#) | [Products](#) | [Competitor Cross-Reference Search](#) | [Product Data Sheet](#)
[Engineering Notes](#) | [Stock Check / Order](#) | [About Us](#) | [What's New](#) | [Contact Us](#)

Copyright © 1997-2000, Comair Rotron
2675 Customhouse Court, San Diego, CA 92154-7619. All Rights Reserved