

**Power entry module Type DC12**

- Panel mount: - screw-on mounting, front-side  
- snap-in mounting, front-side
- Appliance inlet, line switch 1- or 2- pole,  
line-filter standard and medical versions



cRUUS pending




Medical filters

**Characteristics**

- Ultra-compact design with smallest panel cut-out
- Line switch non-illuminated
- With EMC-Shield
- Qualifield for use in equipment according to IEC/EN 60950

**Technical data**

Rated voltage	125/250 VAC; 50/60 Hz
Rated currents	1-10 A; @ T <sub>a</sub> 40°C
Leakage current, Standard	< 0,5 mA (250 V/60 Hz)
Medical (M5)	< 5 µA (250 V / 60 Hz)
Test voltage (2 sec)	1,7 kVDC between L-N 2,7 kVDC between L/N-PE
Allowable ambient air temperatures T <sub>a</sub>	-25 °C at +85 °C
Climatic category	25/085/21 acc. to IEC/EN 60068-1
Degree of protection (front-side)	IP40 acc. to IEC 60529
Protection class	suitable for equipment with prot. cl. I, acc. to IEC 61140
Terminals	quick-connect 6,3 x 0,8 mm
Panel thickness s	Screw-on: max. 8,0 mm Snap-in: 1,0 to 3,0 mm
Materials: Housing	Thermoplastic, black, UL94 V-0
Appliance-inlet	 acc. to IEC/EN 60320-1/C14, Protection class I, pin-temperature 70 °C (cold condition)
Line filter, standard and medical	acc.to IEC 60939, EN 133 200, UL 1283, CSA C22.2 no. 8

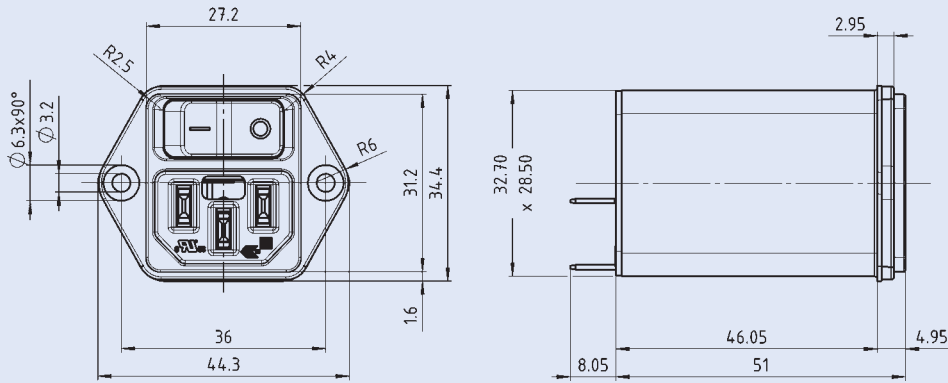
**DC12 Switch**

Line switch (Rocker switch)	1- or 2-pole, non-illuminated acc. to IEC/EN 61058-1
Electrical rating acc. to IEC/EN 61058-1	16 (4) A / 250 VAC, 10'000 switch operations 10 (4) A / 250 VAC, 50'000 switch operations Statement ( ) at inductive load with p. f. 0.6
Electrical rating acc. to UL1054	16A 125 - 250 VAC, 6'000 switch operations (1) HP 125 VAC (2) HP 250 VAC Statement ( ) at inductive load with p. f. 0.45
Inrush current acc. to IEC/EN 61058-1	capacitive 100A, 3-4 ms continuous current 5 A
Contact gap	≥ 3 mm

## POWER ENTRY MODULES

### Dimensions

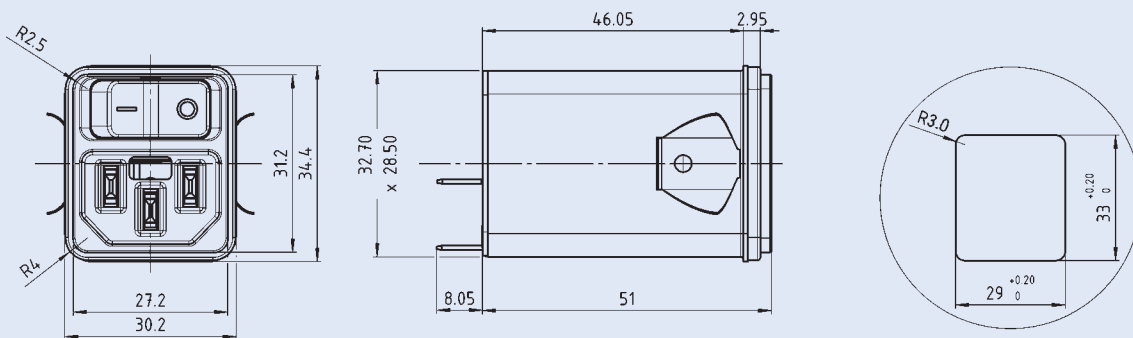
Screw-on mounting



Panel cut-out

Mounting screw torque 0,5 Nm

Snap-in mounting



Panel cut-out

### Technical data of filter-components

Rated current	Filter-Type	Inductance L1/L2 (mH)	Capacitance		R (MΩ)
			CX2 (nF)	CY2 (nF)	
1	Standard	10.0	100	2 x 2,2	1
2		4.0			1
4		1.5			1
6		0.8			1
10		0.3			1
1	Medical (M5)	10.0	100	-	1
2		4.0			1
4		1.5			1
6		0.8			1
10		0.3			1

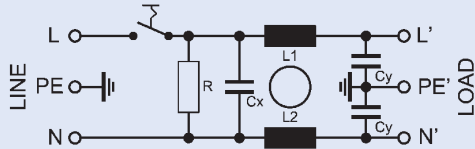
### Standard version

### Medical version

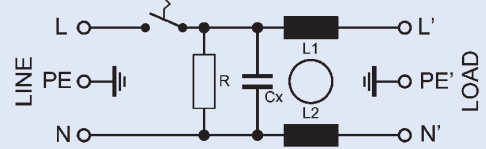


Medical filters

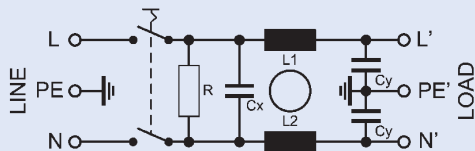
#### Standard filter 1-pole



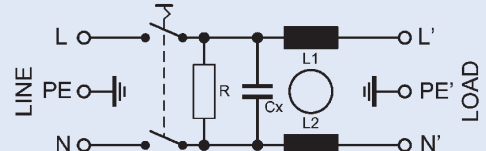
#### Medical filter 1-pole (M5)



#### Standard filter 2-pole



#### Medical filter 2-pole (M5)



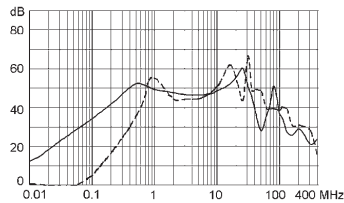
### Attenuation loss

Standard version

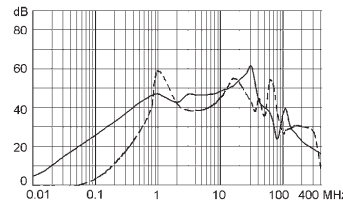
Medical version

differential mode .....  
common mode ——

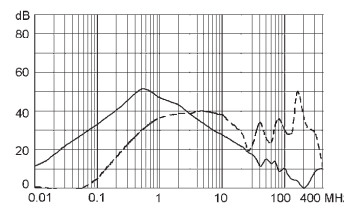
1 A



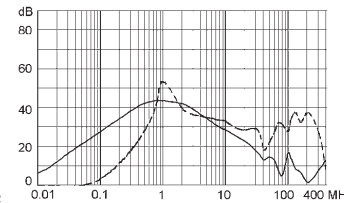
2 A



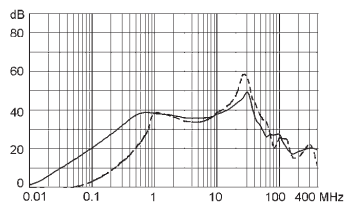
1 A



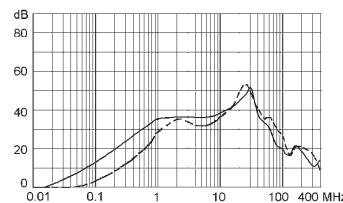
2 A



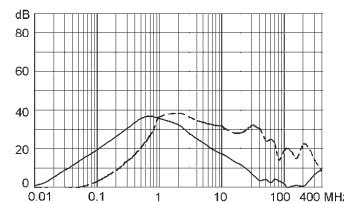
4 A



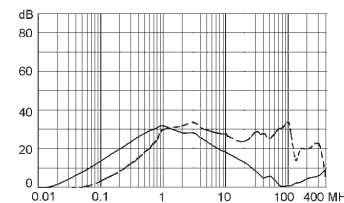
6 A



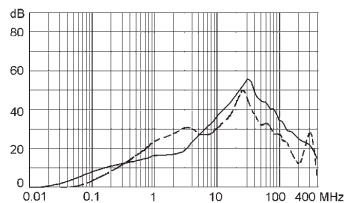
4 A



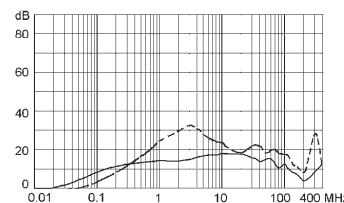
6 A



10 A



10 A



**Order Numbers**

Standard		Medical (M5)		Rated Current	Screw	Snap-in
1-pole	2-pole	1-pole	2-pole			
DC12.1102.003	DC12.1102.001	DC12.1202.003	DC12.1202.001	1	•	
DC12.2102.003	DC12.2102.001	DC12.2202.003	DC12.2202.001	2	•	
DC12.3102.003	DC12.3102.001	DC12.3202.003	DC12.3202.001	4	•	
DC12.4102.003	DC12.4102.001	DC12.4202.003	DC12.4202.001	6	•	
DC12.5102.003	DC12.5102.001	DC12.5202.003	DC12.5202.001	10	•	
DC12.1102.103	DC12.1102.101	DC12.1202.103	DC12.1202.101	1		•
DC12.2102.103	DC12.2102.101	DC12.2202.103	DC12.2202.101	2		•
DC12.3102.103	DC12.3102.101	DC12.3202.103	DC12.3202.101	4		•
DC12.4102.103	DC12.4102.101	DC12.4202.103	DC12.4202.101	6		•
DC12.5102.103	DC12.5102.101	DC12.5202.103	DC12.5202.101	10		•

**Accessories**

**Insulating cover**

The terminals of the SCHURTER power entry modules can be protected against unintentional contact by the use of an insulation cover.

They are made of flexible thermoplastic (UL 94V-0, black) and can be easily mounted from the rear side.



<b>Order Number</b>	suitable for
0859.0047	DC12

**Cord retaining kits**

For protection against loosening or accidental disconnection of the plug connector. Can also be mounted later. The correct kit type for the combination of fixed and free components is shown in the selection chart.

DC12 snap-in components require additional drilling for the cord retaining kit as shown in the panel cut-out of the DC12 screw-on mounting. Each cord retaining kit consists of:

- 1 Stainless steel retaining clip
- 2 Nickel plated brass pillars
- 2 Nickel plated brass nuts
- 2 Nickel plated beryllium copper crinkle washers



Cut-aways or countersinks on pillars to face inwards

**Cord Retaining Kit Selector Chart**

Type	DC12 Snap-in	DC12 Screw-on
Connector for cable		
4782.0000	4700.0001	4700.0002
4782.0100		

**Other versions on request:**

- line switch with other rocker marking
- illuminated red, green, yellow
- Solder or quick connect terminals 4.8 x 0.8 mm
- Capacitance CX1
- Medical Type (M80) with CY2
- Protection class II version

APPLIANCE INLET WITH LINE SWITCH AND LINE FILTER

## NEW COMPACT POWER ENTRY MODULE DC12



Additional to type DC11



## THE SCHURTER RANGE AT A GLANCE



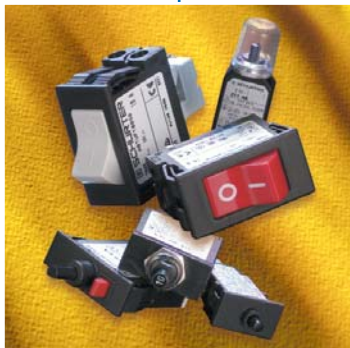
FUSES



CONNECTORS



CIRCUIT BREAKERS  
FOR EQUIPMENT



INPUT SYSTEMS



SCHURTER develops, manufactures and markets components for the electrical and electronics industries worldwide. Our business sectors comprise fuses, connectors, circuit-breakers for equipment, and input systems.

Please find detailed information on the various SCHURTER product groups in our catalogs.