

MICRO SWITCH

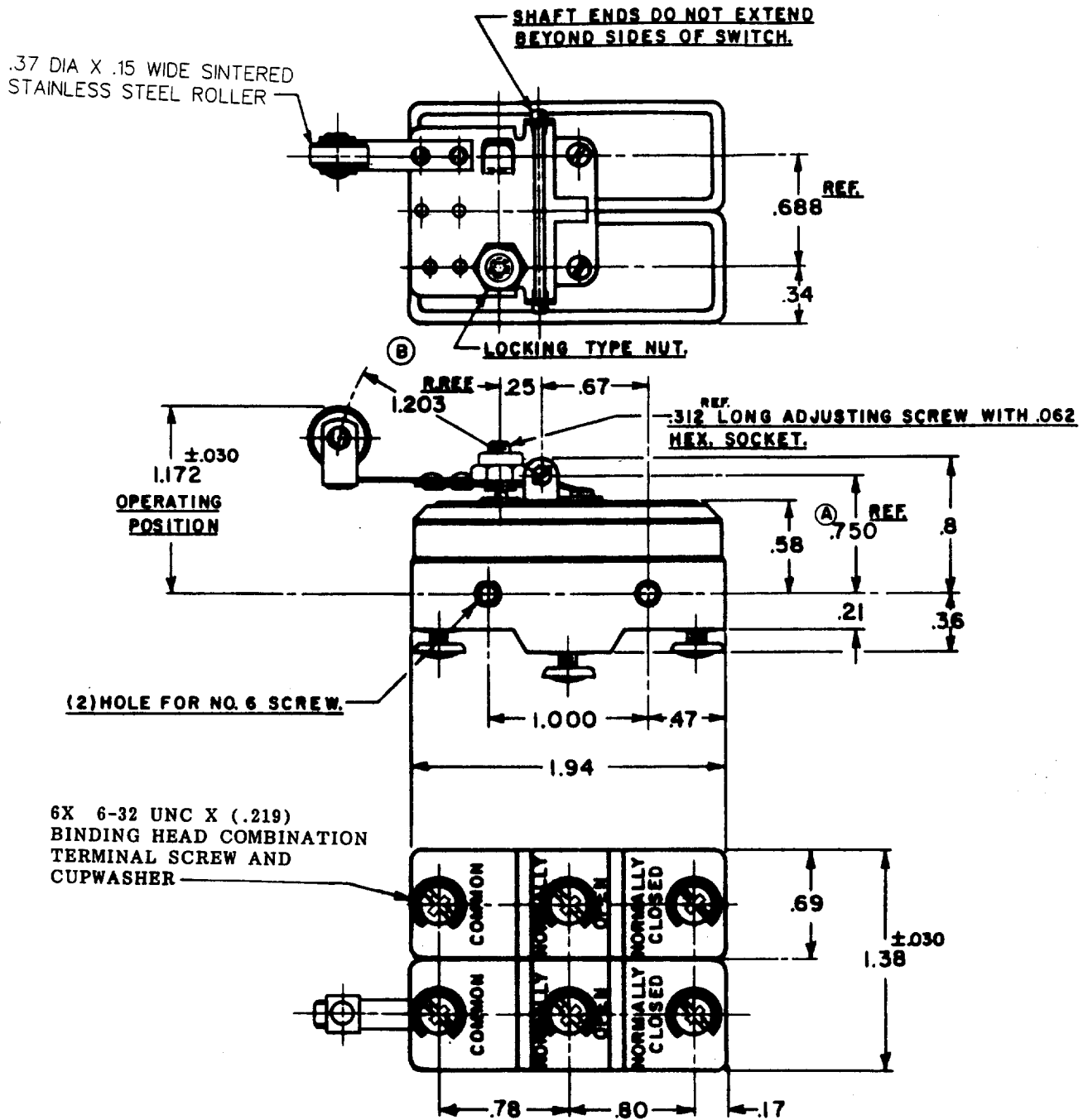
A DIVISION OF HONEYWELL-INTERNATIONAL REGULATORY DIVISION
 MICRO SWITCH
 FEDERAL REGISTER

FED. MFR. CODE 91929

SWITCH - BASIC

CATALOG LISTING

6AS36



NOTE-

1-ADJUSTING SCREW IS PROVIDED TO ADJUST OPERATING POSITIONS FOR SIMULTANEOUS OR SEQUENCE OPERATION.

THIS DRAWING COVERS A PROPRIETARY ITEM AND IS THE PROPERTY OF MICRO SWITCH, A DIVISION OF HONEYWELL. THIS DRAWING IS NOT TO BE COPIED OR USED WITHOUT THE APPROVAL OF MICRO SWITCH.

CHARACTERISTICS

OPERATING FORCE ----- 8 OZ. MAX.

RELEASE FORCE ----- 1/2 OZ. MIN.

DIFFERENTIAL TRAVEL ----- .109 MAX.

OVERTRAVEL ----- .020 MIN.

ELECTRICAL DATA

CONTACT ARRANGEMENT
 (2) S.P.D.T.

UNDERWRITERS' LAB. INC. LISTED RATING
 -L96- 15 A-125, 250, OR 400 VAC
 1/2 A-125 VDC; 1/4 A-250 VDC
 1/8 HP-125 VAC, 1/4 HP-250 VAC

SCALE - FULL

DO NOT SCALE PRINT

UNLESS OTHERWISE SPECIFIED
 DIMENSIONS ARE IN INCHES
TOLERANCES ARE:

ONE PLACE	(.0)	±.030
TWO PLACE	(.00)	±.015
THREE PLACE	(.000)	±.005
ANGLES		±

WEIGHT

6AS36

M

DRAWING NUMBER

ISSUE

1	2	3	4
X	X	X	X
7	8	9	0

REPLACES

RELEASE NO. S.R. 6013

CNT 16 JAN. 57

CHECK

14 JAN. 57

BLS

CHECK

18 JAN. 57

CHECK

12 JAN. 57

CHECK

K. A. F.

O-30378