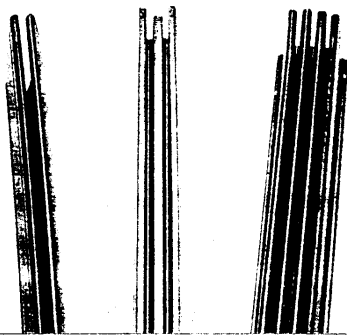


## SHUNT BAR

K1501, K1512, K1513



- Also called edge connector or shorting connector
- Made of conductive polypropylene. Rg:  $10^3$  to  $10^5\Omega$
- Length: 1m but can be cut to required length
- Resists up to 80°C
- Multichannel connectors meet DIN41612

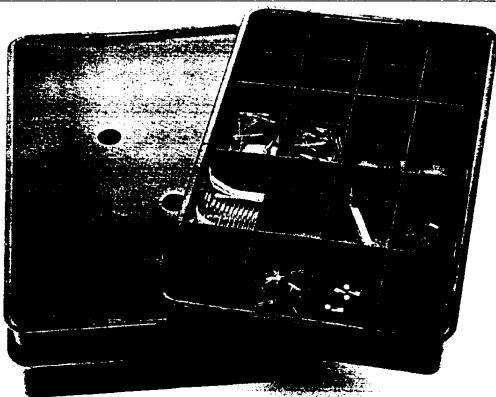


EN

	CODE	UNIT
Single channel	K1501	metre
Two-channel	K1512	metre
Three-channel	K1513	metre

## COMPONENT TRAY

K1619, K1620



- Made of conductive polypropylene
- 16 compartments, internal 60x100mm
- Stackable
- Rg:  $10^3$  to  $10^5\Omega$
- 459 x 286 x 53mm overall
- Weight: 0.83kg, with lid - 0.95kg
- Can be fitted with lid, approx. 1mm thick

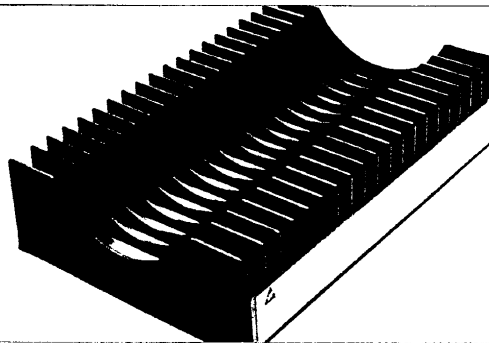


EN

	CODE	UNIT
Compartment tray	K1619	each
Fibreboard lid	K1620	each

## SMD SPOOL RACK

K240



- Moulded in conductive polypropylene
- Holds up to 19 spools up to 15mm wide
- Spool diameter 180 to 330 mm
- Convenient label holder
- Rg:  $10^3$  to  $10^4\Omega$
- 345 x 230 x 75mm overall

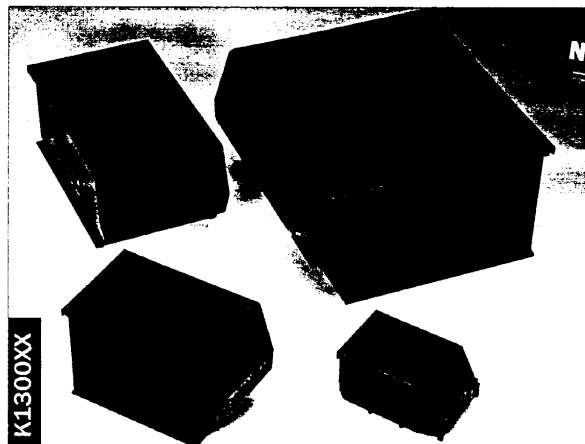


EN

	CODE	UNIT
Spool rack	K240	each

## CONDUCTIVE PARTS BINS FOR LOUVRED PANELS

For use in safe handling areas when handling static-sensitive devices and components. Can be self-stacked or, for increased flexibility, used with louvre panels, cabinets and shelving.



K1300XX

- Made of conductive polypropylene
- Stackable
- Six sizes
- Rg:  $10^3$  to  $10^5\Omega$



EN

LxWxH	CODE	UNIT
95 x 100 x 50mm	K1300	each
175 x 100 x 75mm	K1301	each
235 x 145 x 125mm	K1302	each
350 x 200 x 145mm	K1303	each
350 x 200 x 200mm	K1304	each
500 x 300 x 200mm	K1306	each

Bench top louvred panel available on request - please inquire

SECTION

10

Handling & Storage