

CFPS-9

ISSUE 4; 21 JULY 2008

RoHS
2002/95/EC

Delivery Options

- Please contact our sales office for current leadtimes

Output Compatibility

- Tri-state HCMOS (3.3V)
- Drive Capability 15pF max

Package Outline

- 5.0 x 3.2 SMD ceramic package with a sealed metal lid

Frequency Range

- 1.8 to 160MHz

Frequency Stabilities

- ± 25 ppm, ± 50 ppm, ± 100 ppm (inclusive of supply voltage & output load variations over the operating temperature range)

Operating Temperature Ranges

- 10 to 70°C (CFPS-9)
- 40 to 85°C (CFPS-9I)

Storage Temperature Range

- 55 to 125°C

Tri-state Operation

- Logic '1' ($\geq 70\%$ Vs) to pad 1 enables oscillator output
- Logic '0' ($\leq 30\%$ Vs) to pad 1 disables oscillator output; when disabled the oscillator output goes to the high impedance state
- No connection to pad 1 enables oscillator output
- Standby current 10 μ A max

Environmental

- Shock: MIL-STD-202F, Method 213B (1000G, 0.5ms, 1/2 sine)
- Vibration: MIL-STD-202F, Method 204D, Test condition D 20G Frequency range 10-2000Hz, 4 hrs in X, Y & Z axes (total 12 hrs)

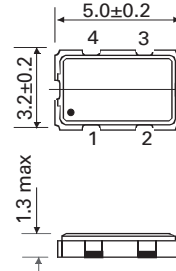
Marking includes

- Model number
- Frequency

Minimum Order Information Required

- Frequency + Model Number + Operating Temperature Code (if applicable) + Frequency Stability

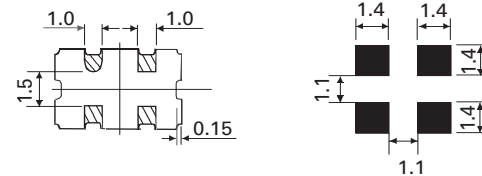
Outline in mm



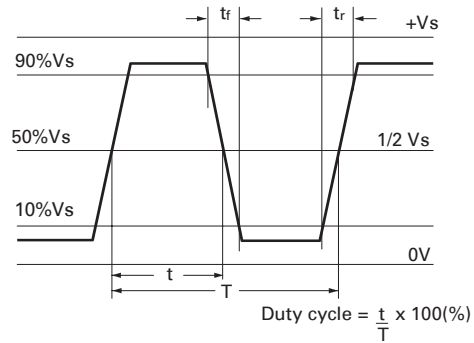
Pad Connections

- Enable/Disable
- GND
- Output
- +Vs

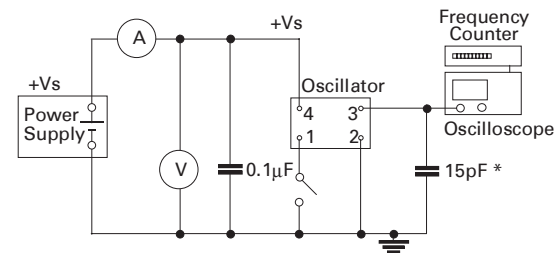
Solder pad layout



Output Waveform



Test Circuit



* Inclusive of jigging & equipment capacitance

SURFACE MOUNT
SPXDS



Electrical Specification - maximum limiting values when measured in test circuit

Frequency Range	Frequency Stabilities	Supply Voltage	Supply Current	Rise Time (tr)	Fall Time (tf)	Duty Cycle	Model Number
1.8 to 50.0MHz	±25ppm*, ±50ppm, ±100ppm	3.3V ±0.3V	20mA	6ns	6ns	45/55%	CFPS-9 CFPS-9I
>50.0 to 80.0MHz			30mA				
>80.0 to 125.0MHz			40mA	4ns	4ns		
>125.0 to 160.0MHz			50mA	3ns	3ns		

Ordering Example

Frequency 24.0MHz CFPS-9 C

Model No. _____

Operating Temperature Code: I = -40 to 85°C, Not applicable for -10 to 70°C _____

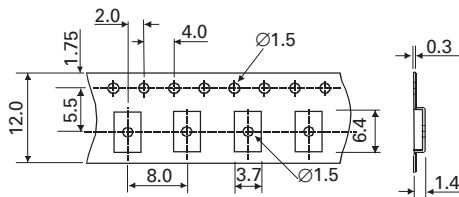
Frequency Stability: A = ±25ppm, B = ±50ppm, C = ±100ppm _____

*Note : ±25ppm over -40+85°C (code IA) is only available up to 50.0MHz

SURFACE MOUNT
SPX0s

Please note that the rise and fall times listed are the maximum values we specify to cover various frequency breaks. In practise the actual values are generally lower depending upon the spot frequency chosen. For typical values please contact our sales office.

Outline in mm - Tape



Outline in mm - Reel

