

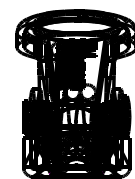
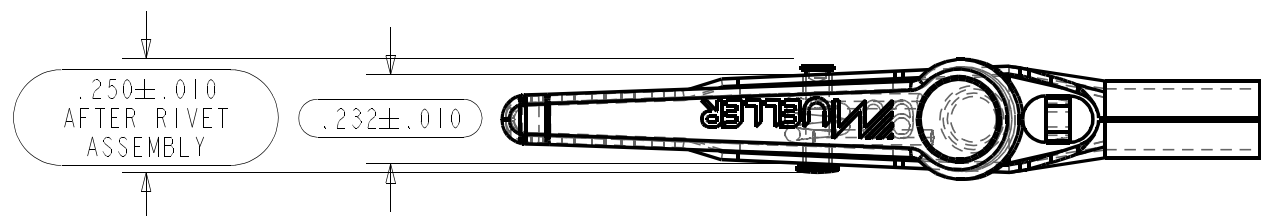
BU-60 10 AMP STEEL ALLIGATOR CLIP WITH BARREL				
ID	QTY	PART	DRAWING	DESCRIPTION
1	1	6012	6012	60 SHORT HALF DETAIL
2	1	6013	6013	60 STEEL RIVET
3	1	6016	6016	TORSION SPRING
4	1	6010	6010	60 LONG HALF BARREL DETAIL

BU-60X 10 AMP SS ALLIGATOR CLIP WITH BARREL				
ID	QTY	PART	DRAWING	DESCRIPTION
1	1	6012SS	6010SS	60 SHORT HALF DETAIL
2	1	6015	6015	60 STEEL RIVET
3	1	6016	6016	TORSION SPRING
4	1	6010SS	6010SS	60 LONG HALF BARREL DETAIL

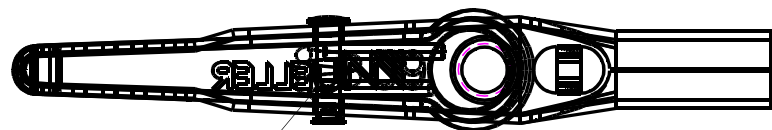
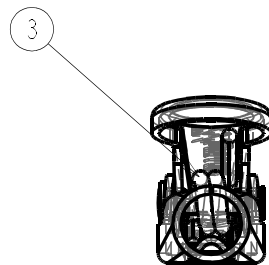
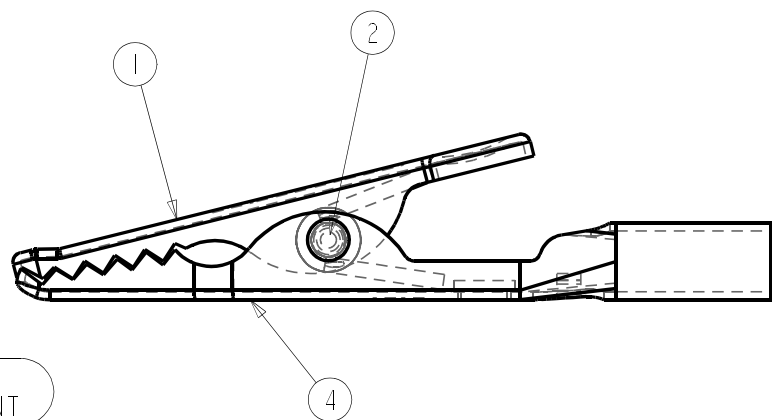
BU-60C 10 AMP COPPER ALLIGATOR CLIP WITH BARREL				
ID	QTY	PART	DRAWING	DESCRIPTION
1	1	6012C	6012C	60 SHORT HALF DETAIL
2	1	6014	6014	60 STEEL RIVET
3	1	6016	6016	TORSION SPRING
4	1	6010C	6010C	60 LONG HALF BARREL DETAIL

- - 8/17/00 REPLACE DWG 60-B-000-A 8/92

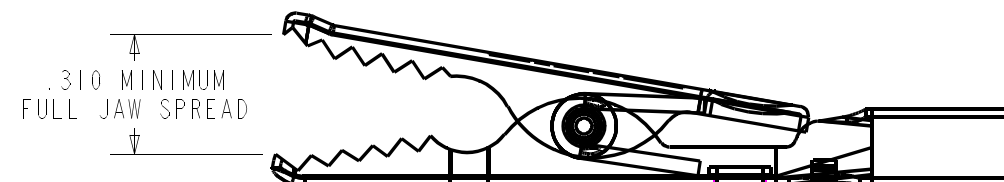
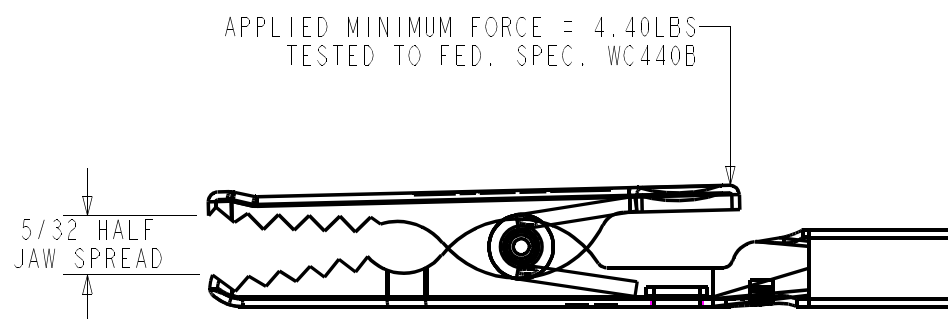
NOTES:
 1 DIMENSIONS NOT TOLERANCED ARE FOR REFERENCE.
 2 SPRING FORCE IS TO BE TESTED PER FED SPEC WC440B AT HALF SPREAD. MINIMUM 4.40LBS. @ 5/32"
 3 10 AMP NOMINAL CURRENT CAPACITY.



.128 ± .010
JAW ALIGNMENT



SEE TEXT NOTE ON PART DRAWING 6010 FOR CORRECT MARKING REQUIREMENT



THIS DRAWING AND THE INFORMATION THERE IN IS THE PROPERTY OF THE MUELLER ELECTRIC COMPANY AND MAY BE USED SOLELY FOR THE PROPOSE FOR WHICH IT IS SUBMITTED. IT IS TO BE TREATED IN CONFIDENCE. IT MAY NOT BE CIRCULATED, REPRODUCED OR DIVULGE TO OTHER PARTIES WITHOUT WRITTEN CONSENT OF MUELLER ELECTRIC INC. IT MUST BE RETURNED UPON REQUEST.

VENDOR BLOCK		MUELLER MUELLER ELECTRIC CO. 1583 E. 31st ST. CLEVELAND, OH 44114	
THE VENDOR LISTED BELOW AGREES TO PROVIDE MUELLER ELECTRIC INC. WITH THE AGREED PRODUCT TO THE SPECIFICATIONS OF THIS PRINT. NO CHANGES WILL BE MADE WITHOUT THE APPROVAL OF MUELLER ELECTRIC INC.	SCALE: 2.000 DWG SIZE: B	APPROVED BY:	DRAWN BY: SER
COMPANY:	DWG DATE: 8/17/2000	REV DATE:	EDITED BY:
REP:	PART NUMBER: BU-60; BU-60C; BU-60X	DESCRIPTION: 60 WITH BARREL CLIP ASSEMBLY	REVISION: -
TITLE:	FILE: BU-60C	TOLERANCE: X.X = ±0.1 X.XX = ±0.01 X.XXX = ±0.005 X° = ±0.5°	DRAWING NUMBER: 6001
DATE:			SHEET NO. 1 / 1