

MICRO SWITCH

FREERPORT ILLINOIS, U.S.A
A DIVISION OF HONEYWELL
FED. MFG. CODE 91929

SWITCH-BASIC

CATALOG LISTING

BZ-3RW8221555513T

BZ-3RW8221555513T

PAGE 1 OF 1

REPLACES

RELEASE NO. PR-5248

M

DRAWING NUMBER

6

ISSUE

CHECK

REVISIONS

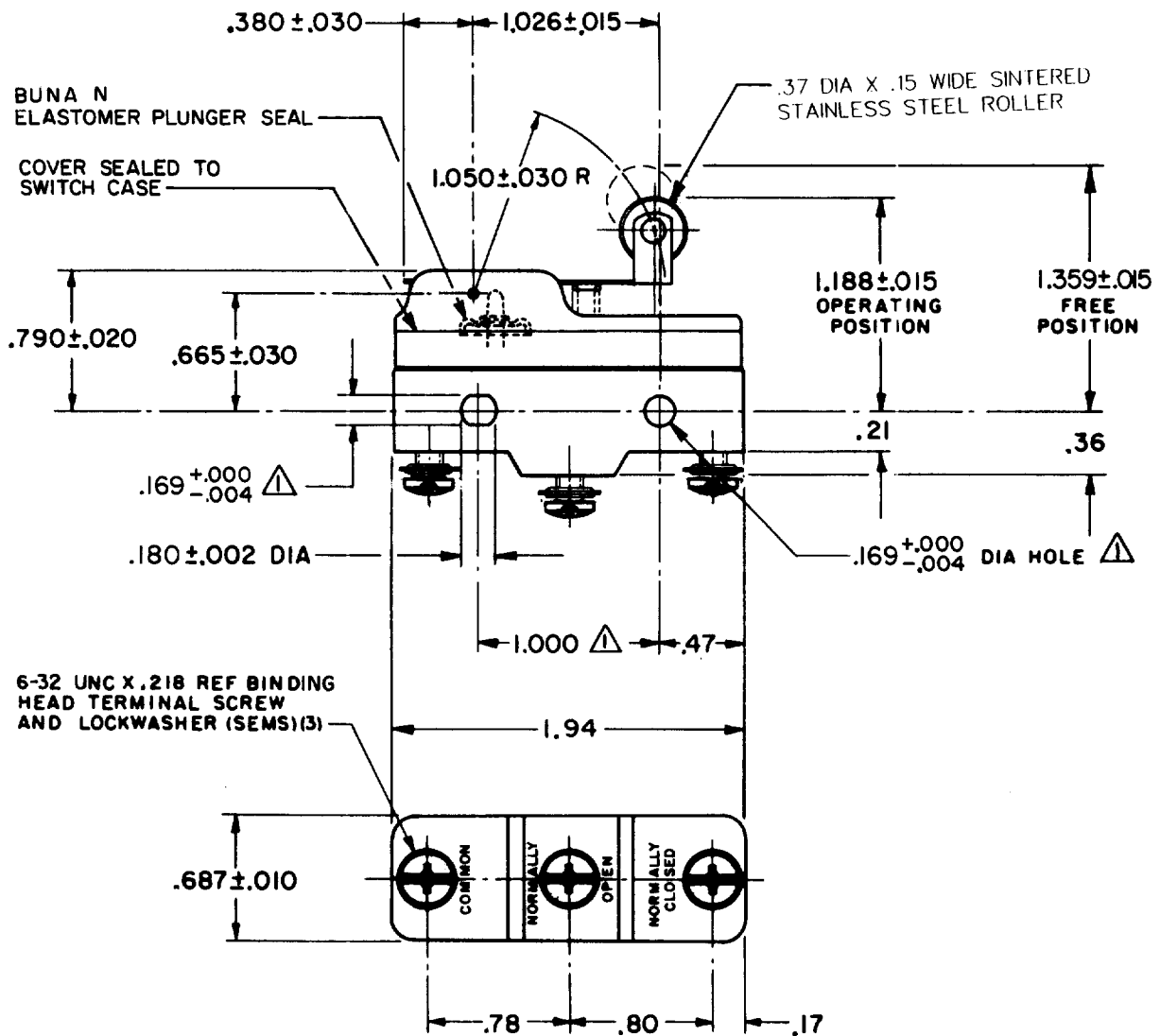
A	CO67209	JAP	2 MAY 90
B	CO-69351-D	JWB	18 JUL 91
C	CO-70184-G	GJW	14 MAR 92
D	CO-75204-B	WLS	1 FEB 94
E	CO93346	DLT	17 AUG 98

CHECK

16 Oct 75

CHECK

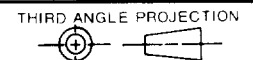
D J WJ5 OCT 75



NOTE-

- △ - MOUNTING HOLES WILL ACCEPT PINS OR SCREWS OF .165 MAX DIA ON 1.000 ± .002 CENTERS
- 2 - SEALED CONSTRUCTION PROVIDES SPLASH RESISTANCE

THIS DRAWING COVERS A PROPRIETARY ITEM AND IS THE PROPERTY OF MICRO SWITCH, A DIVISION OF HONEYWELL. THIS DRAWING IS NOT TO BE COPIED OR USED WITHOUT THE APPROVAL OF MICRO SWITCH.



CHARACTERISTICS

OPERATING FORCE — — — 6 1/2 OZ MAX
RELEASE FORCE — — — — 1 1/2 OZ MIN
DIFFERENTIAL TRAVEL — — — .007-.030
OVERTRAVEL — — — — — .094 MIN

ELECTRICAL DATA

CONTACT ARRANGEMENT
S P D T

10A 125, 250 OR 480 VAC
1/2 A 125 VDC, 1/4 A 250 VDC

UL CE L288

SCALE FULL

DO NOT SCALE PRINT

TOLERANCES
APPLY TO DESIGN UNITS. CONVERSIONS ARE ONLY FOR REFERENCE. UNLESS NOTED, TOLERANCES ARE ±

DIM.	TOL.	DIM.	TOL.
mm	mm/in	in	mm/in
NO PLACES	X	1/.04	
ONE PLACE	X,X	0.4/.016	X,X 0.8/.03
TWO PLACES	X,XX	0.15/.006	X,XX 0.38/.015
THREE PLACES	X,XXX		X,XXX 0.13/.005

DESIGN UNITS SI METRIC US CUSTOMARY

WEIGHT .076 LB.

FORMTEK

DRAWN

D J WJ5 OCT 75