



# TRIM TRIO<sup>®</sup> screw termination contacts



## Description

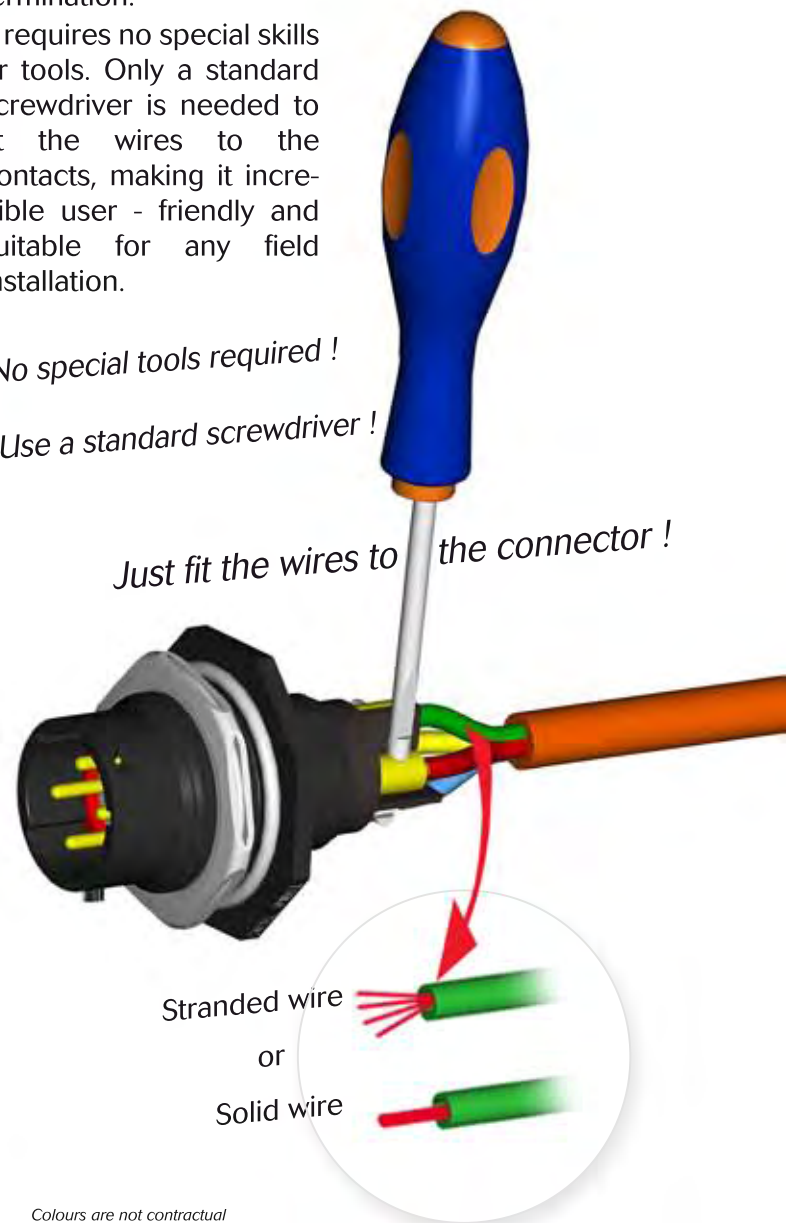
UTS, part of the well-known TRIM TRIO<sup>®</sup> interconnection system

UTS series with screw termination contacts combines extreme sealing performance, rapid & secure connector mating with the ease of wire termination.

It requires no special skills or tools. Only a standard screwdriver is needed to fit the wires to the contacts, making it incredible user - friendly and suitable for any field installation.

*No special tools required !*

*Use a standard screwdriver !*



Colours are not contractual

## Features

- Only a standard screwdriver is needed to fit the wires to the contacts
- Contact accepting a wide range of wires
- Rapid mating with 1/3 turn with an audible & sensitive "click"
- Dynamic IP68/69K water protection
- Rapid & secure mating - min 250 mating cycles
- High salt spray resistance
- Male connectors have a grounding contact
- RoHS compliant

## Applications

- Tunnel fans
- Videosurveillance
- Traffic control
- Parking detection systems
- Meteorological measurement systems and there is more

**UTS with screw contact termination is perfect for field installations.**

**UTS : your first choice in waterproof connectors !**



**SOURIAU**  
Connection Technology



# TRIM TRIO<sup>®</sup> screw termination contacts

## Technical characteristics

### Mechanical

- Durability 250 cycles
- Thermal shock Per MIL-std 1344 method 1003
- Screw tightening torque 40 Ncm

### Electrical

- Current rating 13 Amp
- Insulation resistance 5000 MΩ min
- Test potential 2000 Vac
- Wire acceptance 0.5mm<sup>2</sup> to 2.5mm<sup>2</sup>
- Rated voltage 320 V class III, PD 2 per **VDE0110** (IEC 60664-1)
- Rated voltage per UL1977 type 2 500 V

### Environmental

- Operating temperature from -40°C to +105°C
- Flammability rating UL94V0 and NFF16102 level 2
- Sealing (mated) Dynamic IP68/69K
- UV resistant Sun and moisture as per ISO 4892
- Salt spray resistance 500 hours

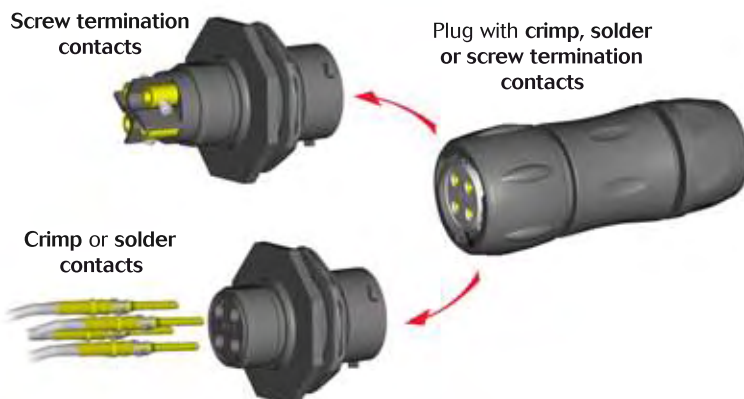
### Material

- Connectors + backshells Thermoplastic
- Contacts High conductive copper alloy  
Min 0.4µm gold plating
- RoHS compliant

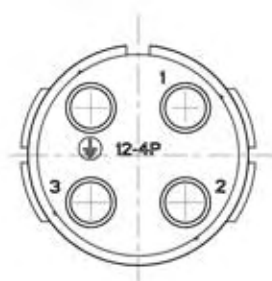


## Connector accommodation

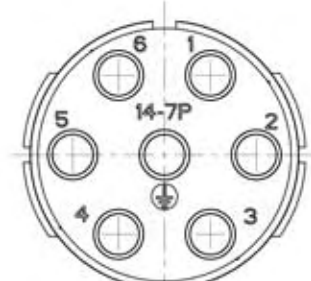
UTS connectors with screw termination contacts are fully intermateable and interchangeable with the UTS crimp and solder versions. (refer to UTS catalog or [www.souriau.com](http://www.souriau.com)).



## Available arrangements



Size 12-4  
3 + Grounding



Size 14-7  
6 + Grounding



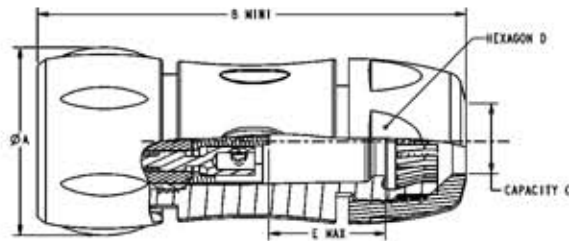
# TRIM TRIO<sup>®</sup> screw termination contacts

## Range presentation

### Plug

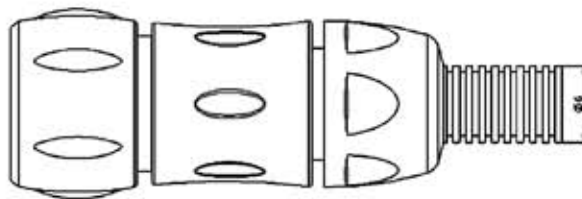


UTS6JC124PSCR (male)  
 UTS6JC124SSCR (female)  
 UTS6JC147PSCR (male)  
 UTS6JC147SSCR (female)



Shell size	12	14
Layout	4 (3+1)	7 (6+1)
ØA	29.7	34.6
B min.	66.7	71.5
Capacity C / Standard	5.0/12.0	7.0/14.0
Capacity C / Reducing seal	3.0/9.0	5.0/12.0
Hexagon D	24.0	26.0
E max. (female)*	21.0 max	18.0 max

\* Shell size 12 & 14  
 Note : all dimensions are in mm



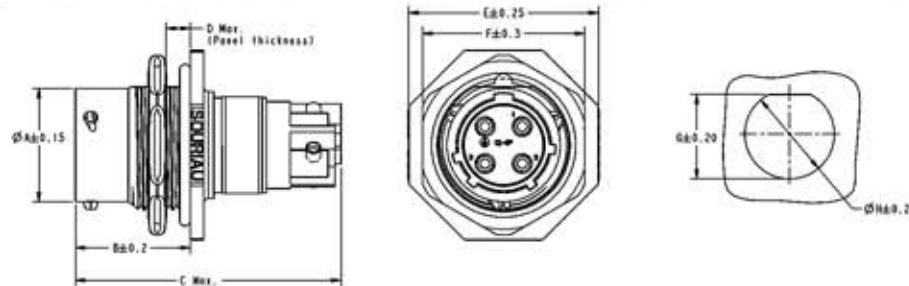
The standard plug and In-line receptacle can be fitted with a flexible conduit - not delivered by SOURIAU.

For all other requests, please consult the factory.

### Jam nut receptacle



UTS7124PSCR (male)  
 UTS7124SSCR (female)  
 UTS7147PSCR (male)  
 UTS7147SSCR (female)



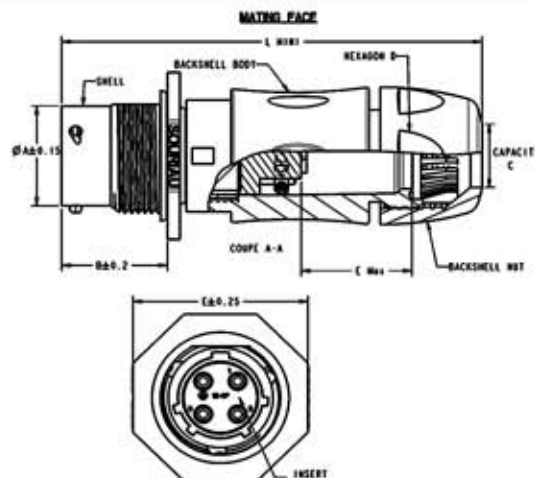
Shell size	Layout	A	B	C max	D max	E	F	G	H
12	4 (3+1)	19.0	19.3	46.5	3.2	31.8	27.0	21.2	22.5
14	7 (6+1)	22.2	19.3	52.5	3.2	34.9	30.2	24.3	25.7

Note : all dimensions are in mm

### In-Line receptacle



UTS1JC124PSCR (male)  
 UTS1JC147PSCR (male)



Shell size	12	14
Layout	4 (3+1)	7 (6+1)
ØA	19.0	22.2
B	19.3	19.3
L mini	76.0	81.0
E	31.8	34.9
Capacity C / Standard	5.0/12.0	7.0/14.0
Capacity C / Reducing seal	3.0/9.0	5.0/12.0
Hexagon D	24.0	26.0
E max. (male)*	22.0 max	22.0 max

\* Shell size 12 & 14  
 Note : all dimensions are in mm



# TRIM TRIO<sup>®</sup> screw termination contacts

## Ordering information

<b>Connector family</b>		<b>Receptacle</b>	<b>UTS 7</b>	<b>-</b>	<b>12</b>	<b>4</b>	<b>P</b>	<b>SCR</b>
		<b>Plug</b>	<b>UTS 6</b>	<b>JC</b>	<b>12</b>	<b>4</b>	<b>S</b>	<b>SCR</b>
		<b>In line</b>	<b>UTS 1</b>	<b>JC</b>	<b>12</b>	<b>4</b>	<b>P</b>	<b>SCR</b>
<b>Body variation</b>	7 : Jam nut receptacle 6 : Cable plug 1 : In line receptacle							
<b>Backshell</b>	JC : IP68/69K backshell (only plug + free hanging)							
<b>Shell size</b>	12 or 14							
<b>Number of contacts</b>	4 or 7							
<b>Type of contacts</b>	P : male S : female							
<b>Contact termination</b>	SCR : Screw termination							

## Accessories

<p><b>Receptacle sealing cap</b></p>  <p><b>Part numbers :</b>            Size 12 : UTS12DCG            Size 14 : UTS14DCG</p>	<p><b>Plug sealing cap</b></p>  <p><b>Part numbers :</b>            Size 12 : UTS612DCG            Size 14 : UTS614DCG</p>	<p><b>Colour coding rings</b></p>  <p><b>Part numbers for receptacle:</b>            Size 12 : UTS712CCR*            Size 14 : UTS714CCR*            * Add G for Green, Y for Yellow, Ro for Red</p> <p><b>Part numbers for plug:</b>            Size 12 : UTS612CCR*            Size 14 : UTS614CCR*            * Add G for Green, Y for Yellow, Ro for Red</p>
---	---	--

**UTS : your first choice in waterproof connectors !**



For further information, visit our web site [www.trimtrio.com](http://www.trimtrio.com),  
 or contact us at [contactindustry@souriau.com](mailto:contactindustry@souriau.com)