

PRODUCT NUMBER

5 4 2 0 2 - X X X X - X X X LF

PLATING

S=15μ"[0.38μm]GOLD
ON CONTACT AREA
100μ"[2.5μm]TIN
ON TAIL

G=30μ"[0.76μm]GOLD
ON CONTACT AREA
100μ"[2.5μm]TIN
ON TAIL

T=100μ"[2.5μm]TIN
ON CONTACT AREA
AND ON TAIL(SEE NOTE 11, 15)

F=2μ"[0.05μm]GOLD
ON CONTACT AREA
AND ON TAIL

LEAD FREE OPTION NOTE 9 & 10

POLARIZATION
NOTE 6

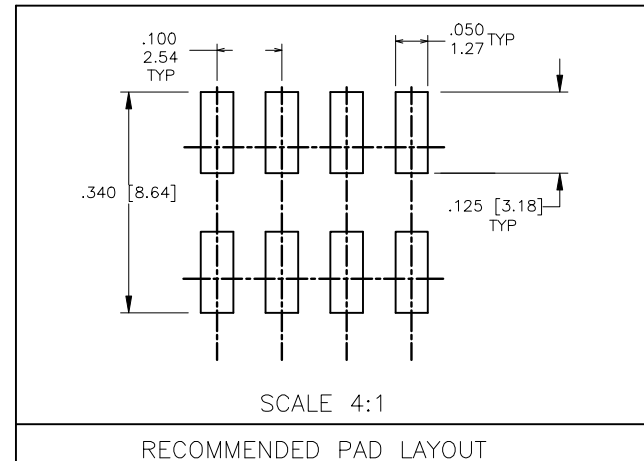
PACKAGING TYPE, NOTE 5

POSITIONS PER ROW
02 TO 20

LEAD STYLE	POST
08	0.230/5.84
30	0.318/8.08

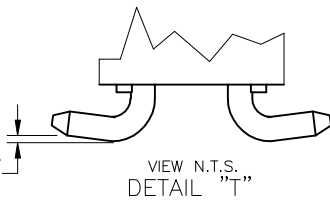
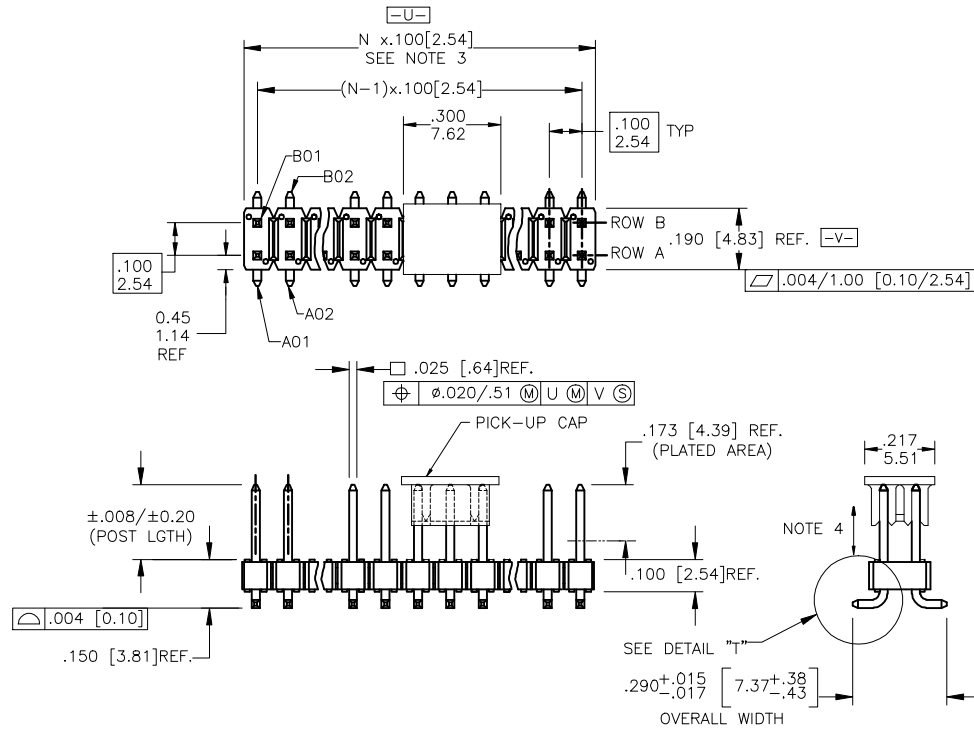
NOTES:

- HOUSING MAT'L: HIGH TEMPERATURE THERMOPLASTIC. FLAME RETARDANT PER UL 94V-0. COLOR: BLACK OR MINERAL FILLED LCP FLAME RETARDENT PER UL-94V-0. COLOR: BLACK.
- THESE PART NUMBERS WILL WITHSTAND EXPOSURE TO 260 C PEAK TEMPERATURE FOR 20 SECONDS IN WAVE SOLDER, INFRA-RED OR VAPOR PHASE SOLDER PROCESS.
- PIN MATERIAL: PHOSPHOR-BRONZE
- TO DETERMINE DIMENSIONS:
N = NUMBER OF POSITIONS PER ROW.
EXAMPLE: 10 POS., N x .100/2.54=1.00/25.4
- 2LBS/0.9KG MIN. PIN RETENTION IN EITHER DIRECTION.
- PACKAGING: _ =POLY BAGS WITHOUT PICKUP CAP.
T =TUBES (OMIT DASH IF NOT POLARIZED).
P =TUBES WITH PICKUP CAPS.
A =TAPE AND REEL WITH PICKUP CAPS.
- FOR POLARIZATION, SPECIFY POSITION NUMBER (i.e. A03=ROW A POS. 3) TO OMIT PIN. OMIT FROM PRODUCT NUMBER IF THIS FEATURE IS NOT APPLICABLE. PRODUCT MANAGEMENT APPROVAL REQUIRED PRIOR TO RELEASE OR SALE OF POLARIZED PRODUCTS.
- UNDERPLATING: 50μ"/1.2μm Ni.
- PIN TIPS ON Sn PLATED PRODUCT MAY HAVE BARE METAL ON TWO SIDES, BOTH ENDS.
- PART NUMBERS WITH "LF" SUFFIX AT THE END ARE LEAD FREE.
- THESE PRODUCTS MEETS EUROPEAN UNION DIRECTIVES AND OTHER COUNTRY REGULATION AS DESCRIBED IN GS-22-008.
- "THIS PRODUCT HAS 100% PURE TIN PLATING IN THE INTERFACE AND HAS NOT BEEN TESTED FOR WHISKER GROWTH IN ALL INTERCONNECT ENVIRONMENTS."
- THE HOUSING WILL WITHSTAND EXPOSURE TO 260°C PEAK TEMPERATURE FOR 20 SECONDS IN A CONVECTION, INFRA-RED OR VAPOR PHASE REFLOW OVEN. SEE APPLICATION NOTES/PROCEDURES IF THEY ARE AVAILABLE.



mat'l. code SEE NOTES 1 & 2		surface ISO 1902	tolerance ISO 406 ISO 1101	projection ISO 1001	product family BERGSTIK
ltr	ecn no	dr	date	tolerances unless otherwise specified	title
M	M08-0118	MHT	6/03/05	angles linear .XX±.01/XX±0.3	.100 UNSHROUDED HDR. DUAL ROW VERT. SMT.
N	M06-0268	MHT	7/17/06	.XXX±.006/XX±0.13	
P	M06-0439	MHT	10/31/06	0'±2'	scale 1:1
R	M07-0092	MHT	2/07/07	dr	D.INGRAM 05/17/99
S	M07-0361	MHT	8/14/07	engr	H.SUNDY 07/21/99
T	M08-0208	MHT	7/18/08	chr	H.SUNDY 07/21/99
U	M08-0279	MHT	9/30/08	appd	H.SUNDY 07/21/99
sheet	revision	u	u	u	FCJ
index	sheet	1	2	3	type Product Customer Drawing

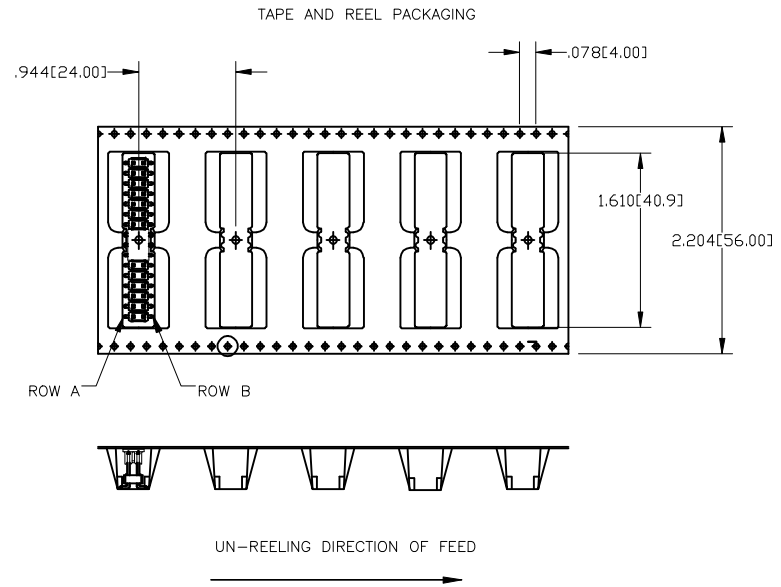
PRODUCT NUMBER
SEE TABLE



mat'l. code		surface ISO 1302	tolerance ISO 406 ISO 1101	projection 	product family BERGSTIK
ltr	ecn no	dr	date	tolerances unless otherwise specified	
U				linear	.XX±.01/XX±0.3
				angles	.XXX±.006/XX±0.13
				0'±2'	.XXX±.0020/XXX±0.051
		dr	D.INGRAM	05/17/99	
		engr	H.SUNDY	07/21/99	
		chr	H.SUNDY	07/21/99	
		appd	H.SUNDY	07/21/99	
sheet	revision				
index	sheet				
				scale	1:1
				INCH/MM	
				title	.100 UNSHROUDED HDR. DUAL ROW VERT. SMT.
				dwg no	54202
				sheet	2 of 3
				size	A3
				type	Product Customer Drawing

TAPE AND REEL PACKAGING

SIZE	LEAD STYLE 08 POST (0.230 [5.84])	LEAD STYLE 30 POST (0.318 [8.08])
2X2	YES	
2X3	YES	
2X4	YES	YES
2X5	YES	
2X6	YES	
2X7	YES	YES
2X8	YES	
2X9		
2X10	YES	
2X11	YES	
2X12		YES
2X13	YES	
2X14		
2X15	YES	
2X16		YES
2X17	YES	
2X18		
2X19		
2X20		



Cross Reference

CORE RANGE	EXTENDED RANGE
54202-X08XXLF	95278-X01-XXLF
54202-X30XXLF	95278-X02-XXLF

mat'l. code	surface ISO 1302	tolerance ISO 406 ISO 1101	projection 	product family BERGSTIK
ltr	ecn no	dr	date	title .100 UNSHROUDED HDR. DUAL ROW VERT. SMT.
u				scale 1:1
	angles	linear		INCH/MM
	0° ± 2'	.XX±.01/XX±0.3		
		.XXX±.006/XX±0.13		
		.XXX±.0020/XXX±0.051		
dr	D.INGRAM	05/17/99		dwg no
engr	H.SUNDY	07/21/99		sheet 3 of 3
chr	H.SUNDY	07/21/99		size
appd	H.SUNDY	07/21/99		A3
sheet	revision			type
index	sheet			Product Customer Drawing



Copyright FCI