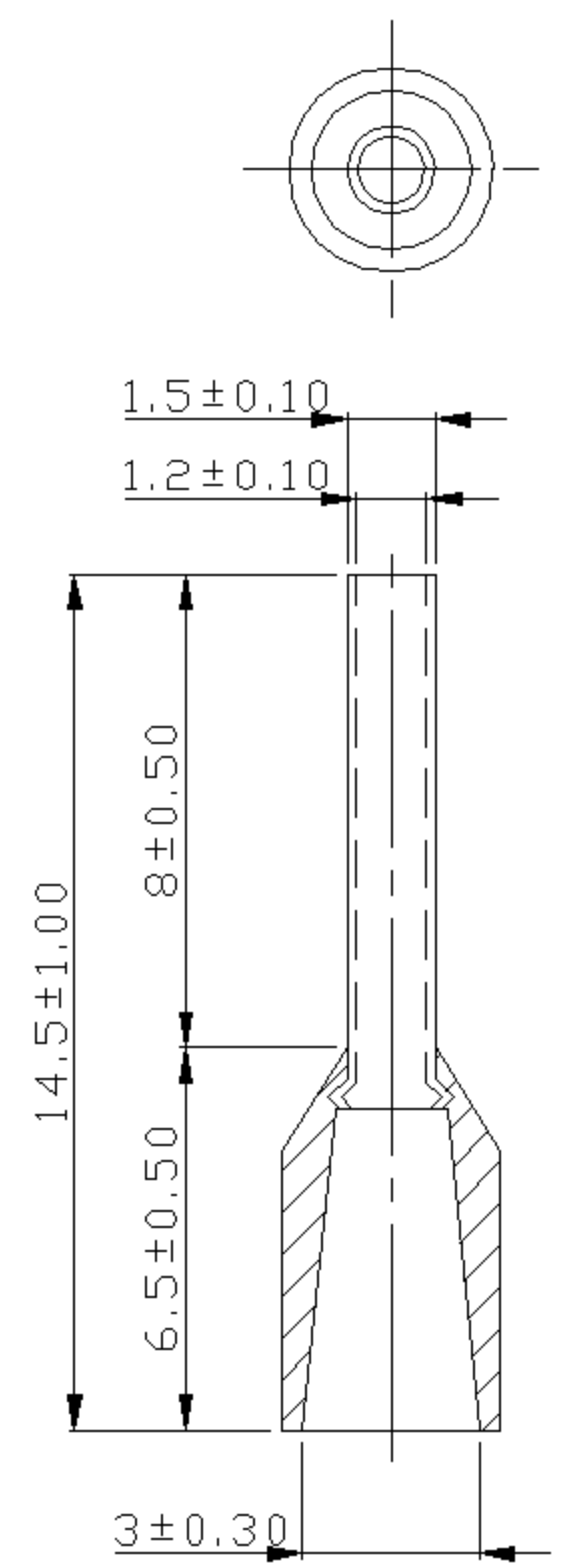


A B C D E F G H

REV	DESCRIPTION	DATE
-----	-------------	------



NOTE:

1. MAXIMUM ELECTRIC CURRENT : 

A.W.G.	20
AMP.	12
2. MAXIMUM ELECTRICAL RATING : 105°C 600 VOLTS MAX.
3. INSULATION MATERIAL : NYLON
4. INSULATION COLOR :  
 FRENCH COLOR : BLUE  
 GERMAN COLOR : WHITE  
 DIN COLOR : GREY
5. CONNECTOR MATERIAL : COPPER TUBE.
6. WIRE RANGE : 20 A.W.G.( 0.75 mm<sup>2</sup>)

Tolerance Unless Otherwise Specified	
0 > 6 mm	$\pm 0.20$ ANGLE
6 > 18 mm	$\pm 0.30$ 0° > ° REF ±
18 > 30 mm	$\pm 0.40$ ° ° ±
30 > 75 mm	$\pm 0.50$ ° ° ±

NAME	NYLON-INSULATED CORD END TERMINALS (E SERIES)			UNIT	mm	
PART NO.	E7508-L	MATERIAL	-----	APPROVE	張馨尹	
NUMBER	KA-95412-C	SCALE	SHEET	PAGE	CHECKED	
DATE	2006/05/10	5/1	1-0	10F1	DRAWN	張馨尹

**KST® K.S. TERMINALS INC.**

A B C D E F G H