

REV.	ZONE	LTR	DESCRIPTION	DATE	REVISER	APPD
------	------	-----	-------------	------	---------	------

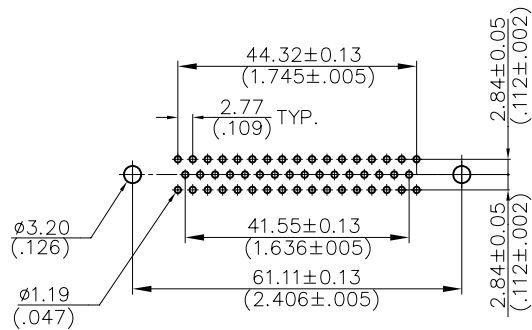
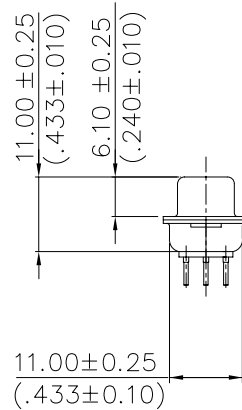
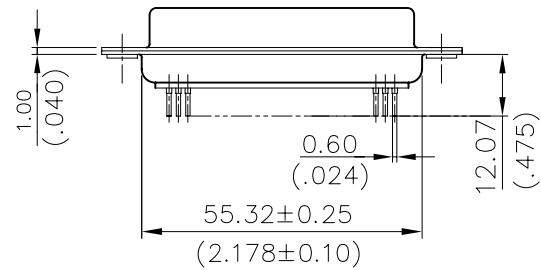
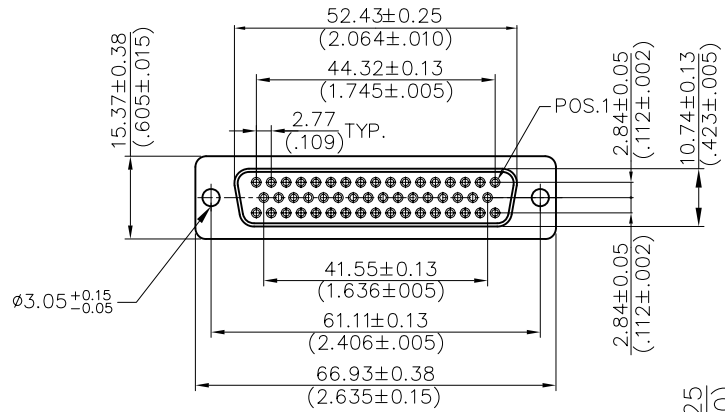
ORDERING INFORMATION:

8TO 050 SS - 3 4 4 S
 (1) (2) (3) (4) (5) (6) (7)

- SERIES
 * 8TO : D-SUB STRAIGHT P.C.B. CONNECTOR
- NUMBER OF CONTACTS
 * 050 - 50 POSITIONS
- CONTACT TYPES
 * SS : STAMPED CONTACT (RECEPTACLE)
- COLOR CODES
 * 1-BLUE * 3-BLACK
 * 2-GRAY * 4-WHITE
- CONTACT FINISH
 * 0 - GOLD FLASH OVER 30μ" NICKEL
 * 2 - SELECTIVED 15μ" GOLD OVER 50μ" NICKEL
 * 3 - SELECTIVED 30μ" GOLD OVER 50μ" NICKEL
 * 4 - GOLD FLASH WITH ALL CONTACT
 * 5 - 15μ" GOLD FOR CONTACT AREA,G/F FOR TERMINAL TAIL.
 * 6 - 30μ" GOLD FOR CONTACT AREA,G/F FOR TERMINAL TAIL.
- METAL SHELL FINISH
 * 4 - TIN PLATED SHELL WITHOUT GROUNDING INDENTS
 * 5 - NICKEL PLATED SHELL WITHOUT GROUNDING INDENTS
- MOUNTING TYPE
 * S-STANDARD HOLE.

SPECIFICATIONS :

- .CURRENT RATING : 3 amp.
- .INSULATION RESISTANCE : 5000 M Ω MIN. AT 500V DC
- .DIELECTRIC WITHSTANDING VOLTAGE : AC 1000V MIN. (FOR 1 MINUTE)
- .CONTACT RESISTANCE : 15 m Ω MAX. MATED
- .OPERATING TEMPERATURE : -25°C - +85°C
- .INSULATOR MATERIAL : P.B.T. & GLASS-FIBER REINFORCED UL 94V-0
- .CONTACT MATERIAL : PHOSPHOR BRONZE,GOLD OVER NICKEL
- .SHELL : STEEL,TIN OR NICKEL PLATED



P.C.B. LAYOUT

RoHS Compliance

			PART NO.	
MATERIAL	TOLERANCE UNSPECIFIED			
	.000 ±	SCALE	UNIT	
	.00 ± 0.25	1 : 1	mm(inch)	
	.0 ± 0.38			
	ANGLE ± 1°			
FINISH	DRAWN	NAME	SHEET	
	YuangBin 09/06/03	YuangBin	8TO SERIES D-SUB 50PIN STRAIGHT P.C.B CONN (FEMALE)	
	DESIGNER	Winder	1 / 1	
	CHECKED	Peterhu		
	APPROVED	DRAWING NO.	REV.	
		R-S18T0-S	1	
			A3	RS18T0S1