



General data

Sockets to accommodate filament lamps and LEDs with bases.

Content

Panel mounting sockets W 2 x 4.6d	3 - 56
Panel mounting sockets W 2 x 4.6d	3 - 57
Panel mounting sockets, tubular lamp holders	3 - 58
Panel mounting sockets, tubular lamp holders	3 - 58
Panel mounting sockets BA 15d	3 - 60
Panel mounting sockets BA 15d	3 - 60

Panel mounting sockets W 2 x 4.6d



Technical data

Mechanical design		Electrical characteristics	
Mounting	see order block	Limit values	42 V/1.5 W
Terminals	see order block	Other specifications	
Lamp socket	W 2 x 4.6d	Weight	1 g

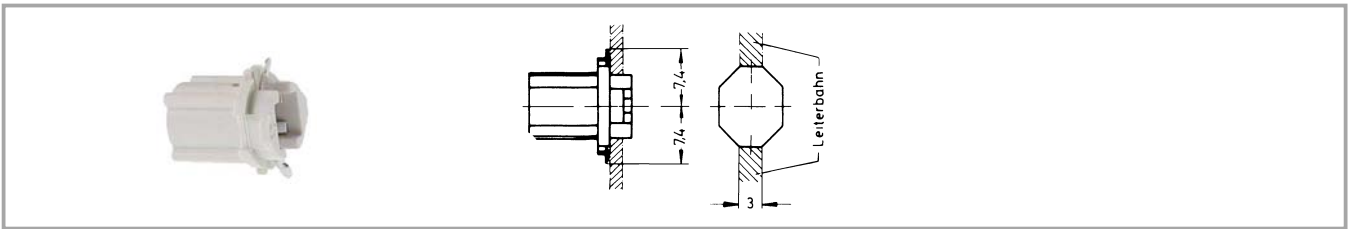
3

Accessories Panel mounting sockets W 2 x 4.6d

Description	Photo	Order no.	Page
Filament lamp, W 2 x 4.6d base, 24 - 30 V		1.90.120.005/0000	5 - 4
Filament lamp, W 2 x 4.6d base, 60 V		1.90.120.009/0000	5 - 4
Filament lamp, W 2 x 4.6d base, 48 V		1.90.120.010/0000	5 - 4
Filament lamp, W 2 x 4.6d base, 24 V		1.90.120.011/0000	5 - 4
Filament lamp, W 2 x 4.6d base, 6 V		1.90.120.013/0000	5 - 4
LED W 2 x 4.6d superbright, red, 24 V		1.90.690.361/0000	5 - 16
LED W 2 x 4.6d superbright, green, 24 V		1.90.690.362/0000	5 - 16
LED W 2 x 4.6d superbright, yellow, 24 V		1.90.690.363/0000	5 - 16
LED W 2 x 4.6d superbright, blue, 24 V		1.90.690.364/0000	5 - 16
LED W 2 x 4.6d superbright, white, 24 V		1.90.690.365/0000	5 - 16

Sockets

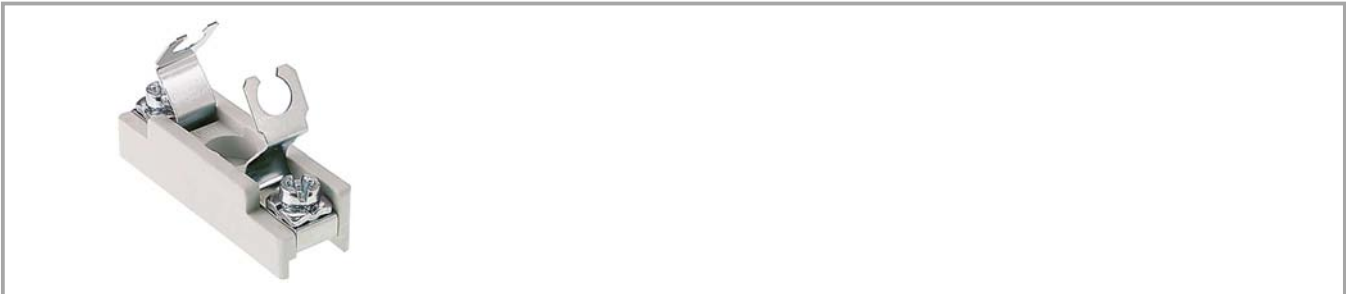
Panel mounting sockets W 2 x 4.6d



Lamp socket	Limit values	Terminals	Mounting	Order no.
W 2 x 4.6d	42 V/1.5 W	2 spring contacts	90° turn	1.72.401.021/0000

Technical data see page 3 - 56

Panel mounting sockets, tubular lamp holders



Technical data

Mechanical design

Mounting	cut-out in housing
Terminals	screw terminals
Lamp socket	S 8.5
Insulation group	according to VDE 0110 b/DIN 57110 b

Electrical characteristics

Limit values 2 A/42 V

Other specifications

Weight 11 g

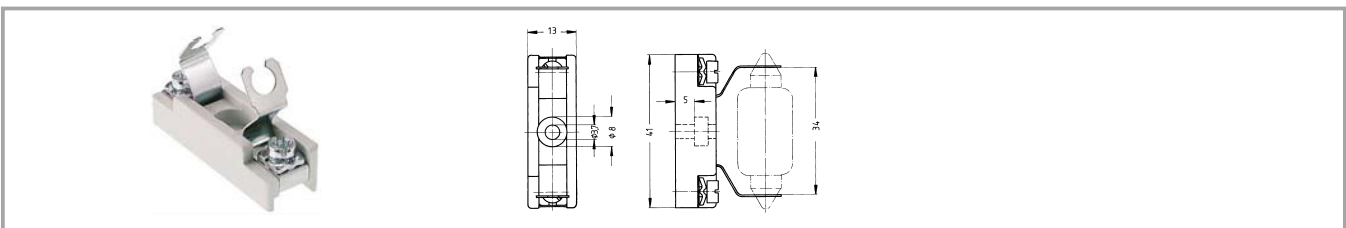
3

Accessories Panel mounting sockets, tubular lamp holders

Description	Photo	Order no.	Page
Filament lamp, S 8.5 base, 24 V, shape L		1.90.111.003/0000	5 - 14
Filament lamp, S 8.5 base, 24 V, shape K		1.90.111.103/0000	5 - 14

Panel mounting sockets, tubular lamp holders

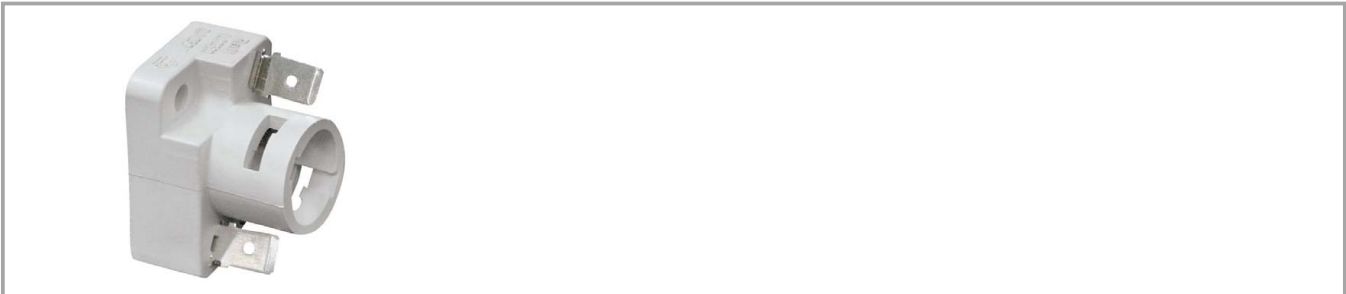
Sockets



Lamp socket	Limit values	Terminals	Mounting	Order no.
S 8.5	2 A/42 V	screw terminals	cut-out in housing	1.02.570.021/0000

Technical data see page 3 - 58

Panel mounting sockets BA 15d



Technical data

Mechanical design

Mounting see order block
 Terminals see order block
 Lamp socket BA 15 d

Electrical characteristics

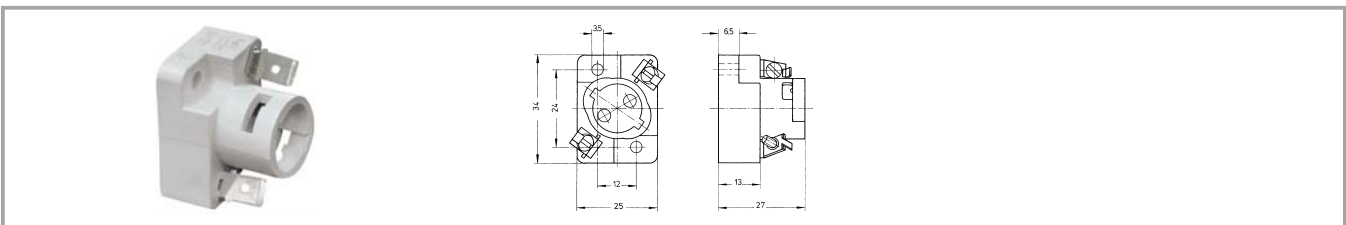
Limit values see order block

Other specifications

Weight see order block

3

Panel mounting sockets BA 15d



Lamp socket	Limit values	Terminals	Mounting	Order no.
BA 15 d	250 V/4 W	quick connector	cut-out in housing	1.02.582.002/0000

Sockets

Technical data see page 3 - 60

Approvals: VDE 2 A, T135°C.