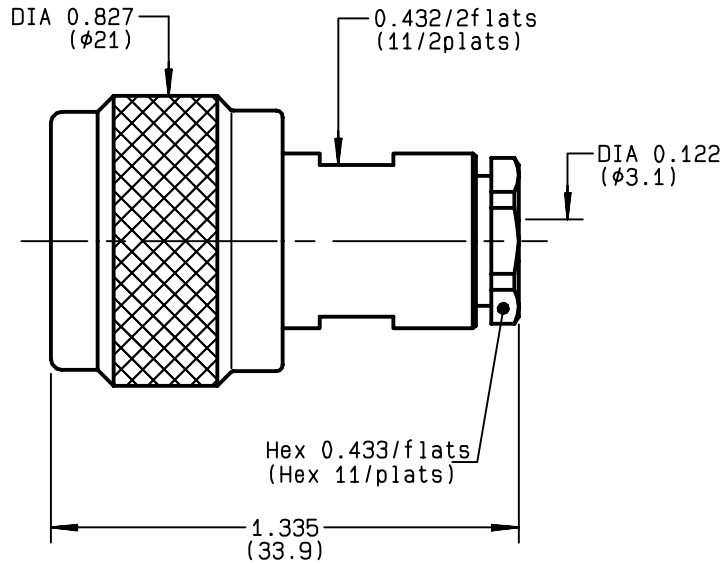


**STRAIGHT PLUG CLAMP TYPE
CABLE 2.6/50+75**

R161.004.000
SERIES N



NOMINAL IMPEDANCE	50 Ω	CABLES : K02252D
FREQUENCY RANGE	0-11 GHz	K02252D SPL
TEMPERATURE RATING	-55/+155 °C	KX 22A
V.S.W.R	1.40 + x F(GHz)Maxi	RD 316
RF INSERTION LOSS	0.048 √F(GHz) dB Maxi	RG 179
VOLTAGE RATING	250 Veff Maxi	RG 187
DIELECTRIC WITHSTANDING VOLTAGE	750 Veff Mini	RG 188
INSULATION RESISTANCE	5000 MΩMini	RG 316
HERMETIC SEAL	NA Atm.cm ³ /s	OTHERS CHARACTERISTICS
LEAKAGE (pressurized only)	NA	CABLE RETENTION 40 N Mini
MECHANICAL DURABILITY	500 Cycles	CENTER CONTACT RETENTION
WEIGHT	35.8 gr	Axial force - mating end 27 N Mini
SPECIFICATION		Axial force - opposite end 27 N Mini
		Torque NA cm.N Mini
		RECOMMENDED TORQUES
		Mating 130 cm.N
		Panel nut NA cm.N
		Clamp nut 150 cm.N

CONNECTOR PARTS	MATERIALS	FINISH	(all values are given in micrometers)
BODY	BRASS	BBR 2	
OUTER CONTACT	BRASS	BBR 2	
CENTER CONTACT	BRASS	GOLD 0.5 OVER NICKEL 2	
INSULATOR	PTFE	-	
GASKET	SILICONE RUBBER	-	
OTHERS PIECES	BRASS	BBR 2	

ISSUE	CREATION DATE	FILE PART-NUMBER
9812D01	12/10/1992	EPC 96-07



BONMINI

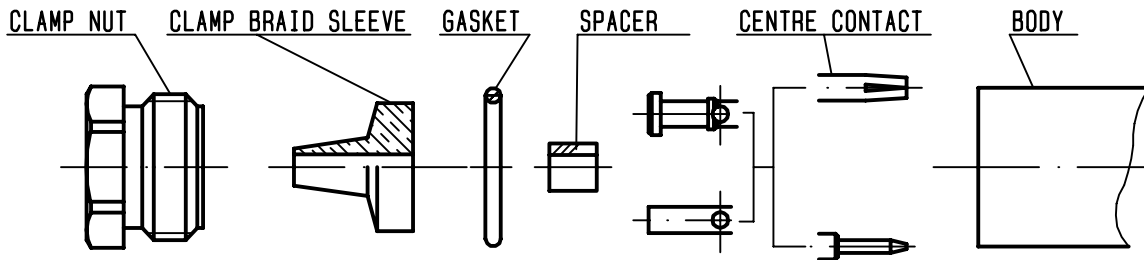
The information given here is subject to change without notice. Design changes may be in order to improve the product .

Connect to the future



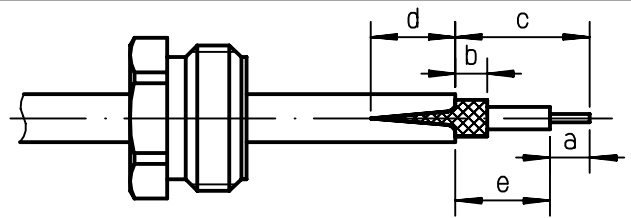
R161.004.000

ISSUE **9812D01** SERIES **N**



①

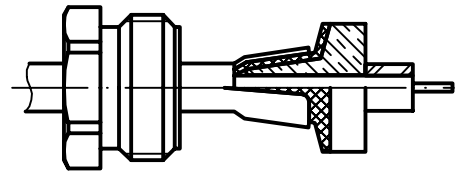
Slide clamp nut onto cable .
Strip the cable .
Cut the jacket (2 slots)
apart if necessary .
-



Stripping	a	b	c	d	e
inch	0.157	0.079	0.315	0.079	0.157
mm	4	2	8	2	4

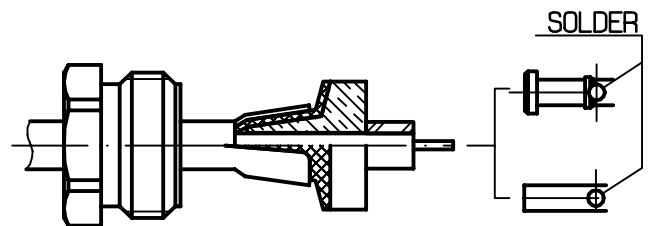
②

Slide the clamp braid sleeve between
cable dielectric and braid .
Cut the braid flush with the clamp
braid sleeve .
Slide the spacer .
-
-
-



③

Solder the cable inner conductor into
centre contact .
Slide the back nut over the clamp
assembly .
-
-
-
-



④

Mount the gasket into the connector .
Screw sub-assembly into the connector
body .
(recommended coupling torque 13.27 in.lb)
-

