

ALL RIGHTS RESERVED. NO PORTION OF THIS PUBLICATION, WHETHER IN WHOLE OR IN PART CAN BE REPRODUCED WITHOUT THE EXPRESS WRITTEN CONSENT OF SPC TECHNOLOGY.

		REVISIONS			DOC. NO. SPC-F005 * Effective: 12/21/98 * DCP No: 680			
DCP #	REV	DESCRIPTION	DRAWN	DATE	CHECKD	DATE	APPRVD	DATE
129	A	RELEASED	DJC	1/6/99	JC	1/8/99	JWM	1/11/99

30 PIECE UNIVERSAL ADAPTER  
KIT CONTAINS:

- 6 – Universal Adapters
- 2 – BNC–Male
- 2 – BNC–Female
- 2 – N–Male
- 2 – N–Female
- 2 – SMA–Male
- 2 – SMA–Female
- 2 – TNC–Male
- 2 – TNC–Female
- 2 – UHF–Male
- 2 – UHF–Female
- 2 – M–UHF Male
- 2 – M–UHF Female




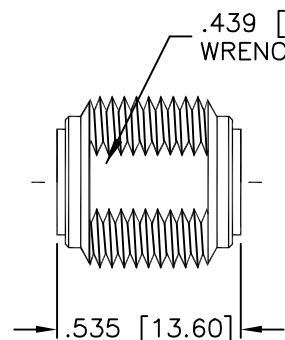
Create any inter-series or intra-series adapter you need.

Each fitting has a common connector end and a universal adapter end. Choose the two common connector ends you need, and screw them together with the universal adapter. Our adapter kits let you mix and match any 2 male or female coaxial fittings. Build the perfect adapter for the job – male to male, male to female, or female to female.

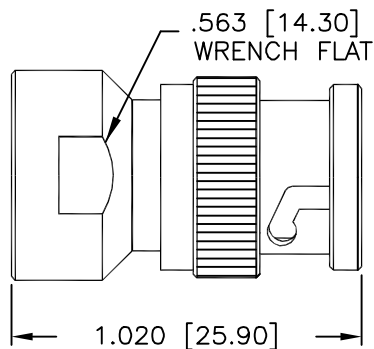
All sections are made of silver plated machined brass with a gold plated phosphor bronze contact anchored in a Teflon dielectric.

Thirty pieces are stored in a padded, soft zippered carrying case.

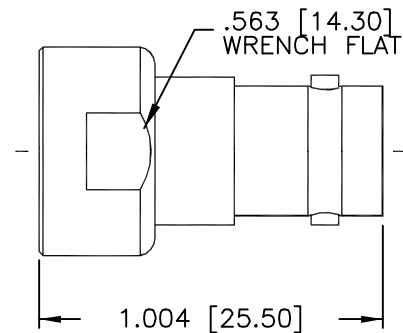
<small>DISCLAIMER: ALL STATEMENTS AND TECHNICAL INFORMATION CONTAINED HEREIN ARE BASED UPON INFORMATION AND/OR TESTS WE BELIEVE TO BE ACCURATE AND RELIABLE. SINCE CONDITIONS OF USE ARE BEYOND OUR CONTROL, THE USER SHALL DETERMINE THE SUITABILITY OF THE PRODUCT FOR THE INTENDED USE AND ASSUME ALL RISK AND LIABILITY WHATSOEVER IN CONNECTION THEREWITH.</small>		 <b>SPC TECHNOLOGY</b>			
UNLESS OTHERWISE SPECIFIED, DIMENSIONS ARE FOR REFERENCE PURPOSES ONLY.	DRAWN BY:	DATE:	DRAWING TITLE:		
	DANIEL CAREY	1/6/99	UNIVERSAL ADAPTER KIT, 30 PIECES, S, G, T		
	CHECKED BY:	DATE:	SIZE	DWG. NO.	
	JOHN COLE	1/8/99	A	8589-0863	
APPROVED BY:	DATE:	ELECTRONIC FILE		REV	
JEFF MCVICKER	1/11/99	16N2745.DWG		A	
		SCALE: NTS	U.O.M.: INCHES [mm]		SHEET: 1 OF 3



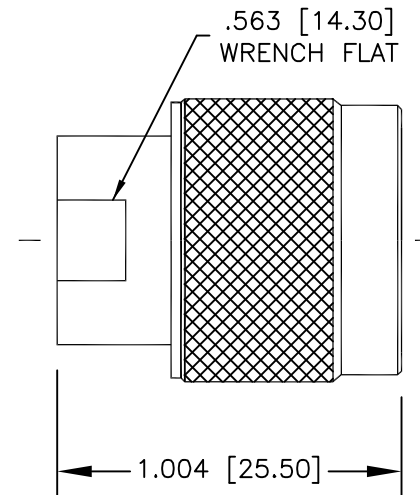
UNIVERSAL ADAPTER  
IMPEDANCE: 50 Ohms



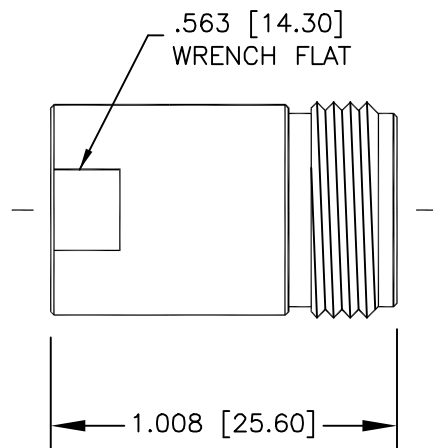
UNIADAPT FEMALE  
TO BNC MALE  
IMPEDANCE: 50 Ohms



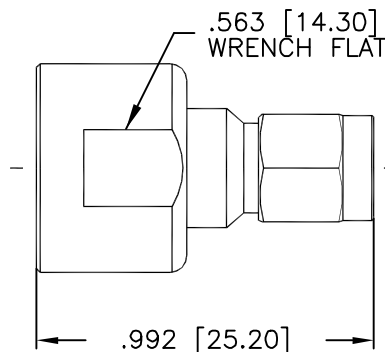
UNIADAPT FEMALE  
TO BNC FEMALE  
IMPEDANCE: 50 Ohms



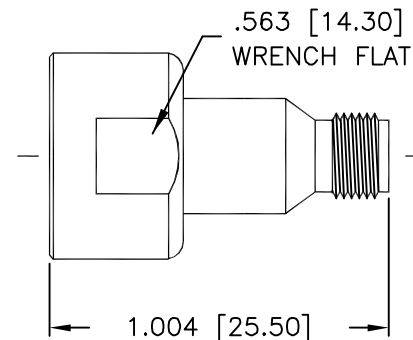
UNIADAPT FEMALE  
TO N MALE  
IMPEDANCE: 50 Ohms



UNIADAPT FEMALE  
TO N FEMALE  
IMPEDANCE: 50 Ohms

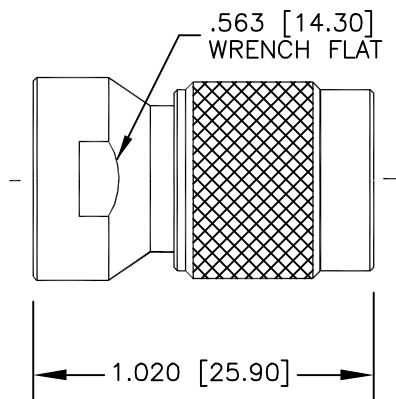


UNIADAPT FEMALE  
TO SMA MALE  
IMPEDANCE: 50 Ohms

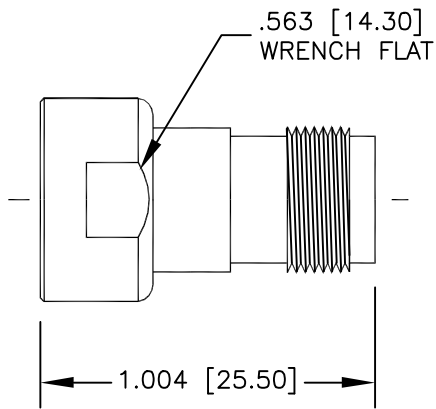


UNIADAPT FEMALE  
TO SMA FEMALE  
IMPEDANCE: 50 Ohms

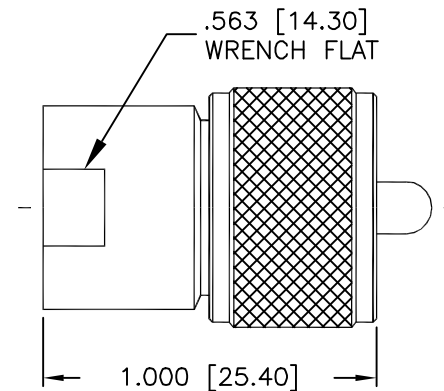
SIZE	DWG. NO.	ELECTRONIC FILE	REV
A	8589-0863	16N2745.DWG	A
SCALE:	U.O.M.:	SHEET:	
NTS	INCHES [mm]	2 OF 3	



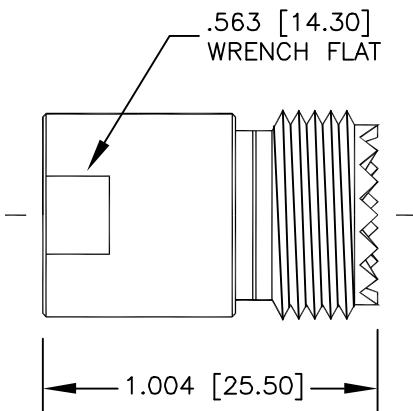
UNIADAPT FEMALE  
TO TNC MALE  
IMPEDANCE: 50 Ohms



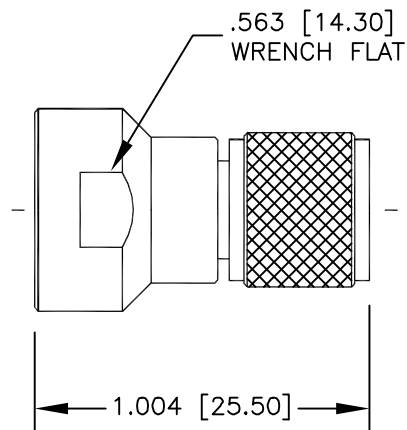
UNIADAPT FEMALE  
TO TNC FEMALE  
IMPEDANCE: 50 Ohms



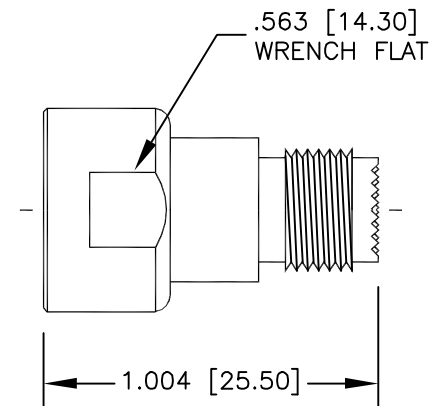
UNIADAPT FEMALE  
TO UHF MALE  
IMPEDANCE: Non Constant



UNIADAPT FEMALE  
TO UHF FEMALE  
IMPEDANCE: Non Constant



UNIADAPT FEMALE  
TO MINI UHF MALE  
IMPEDANCE: 50 Ohms



UNIADAPT FEMALE TO  
MINI UHF FEMALE  
IMPEDANCE: 50 Ohms

SIZE <b>A</b>	DWG. NO. <b>8589-0863</b>	ELECTRONIC FILE <b>16N2745.DWG</b>	REV <b>A</b>
SCALE: NTS	U.O.M.: INCHES [mm]	SHEET: 3 OF 3	