

# “High Frequency Ceramic Solutions”

## 5.77 GHz Chip Antenna

P/N 5775AT43A100

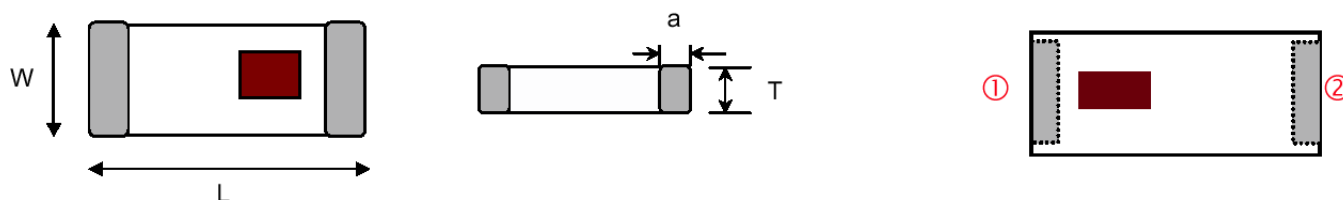
Detail Specification Page 1 of 3

Part Number	Frequency (MHz)	Peak Gain (XZ-V)	Ave. Gain (XZ-V)	Return Loss
5775AT43A100_	5725 - 5825	3.9 dBi typ.	-1.5 dBi typ.	9.5 dB min.

Input Power	Impedance	Operating Temperature Range	Reel Qty
3 Watts max	50 Ω	-40 to +85°C	1000

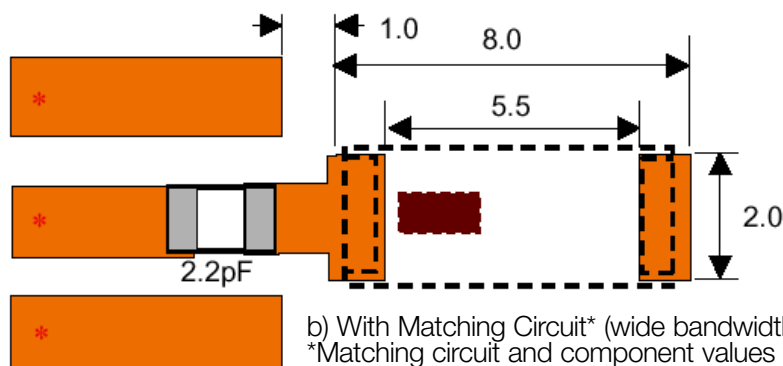
### Mechanical Dimensions

	L	W	T	a	Terminal Configuration	
Inches	0.276 ± .008	0.079 ± .008	0.047 +.004 / -.008	0.020 ± .012	1	INPUT
mm	7.0 ± 0.2	2.0 ± 0.2	1.20 +0.1 / -0.2	0.50 ± 0.3	2	NC



### Mounting Considerations

Mount these devices with brown colored side facing up. Line width should be designed to provide 50Ω impedance matching characteristics.



b) With Matching Circuit\* (wide bandwidth)  
 \*Matching circuit and component values will depend on PCB layout.

Johanson Technology, Inc. reserves the right to make design changes without notice.  
 All sales are subject to Johanson Technology, Inc. terms and conditions.

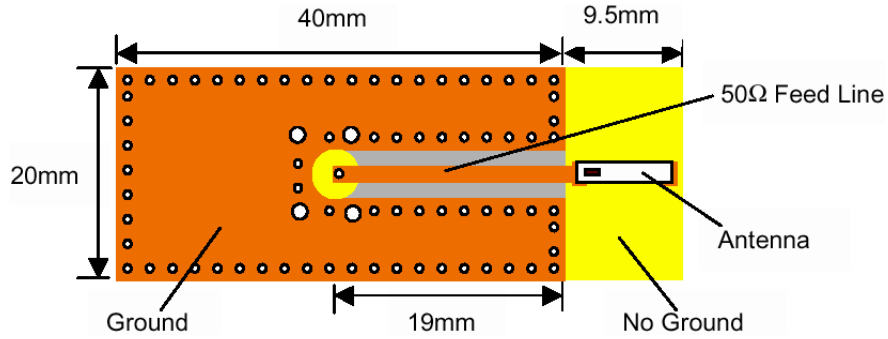
# “High Frequency Ceramic Solutions”

## 5.77 GHz Chip Antenna

P/N 5775AT43A100

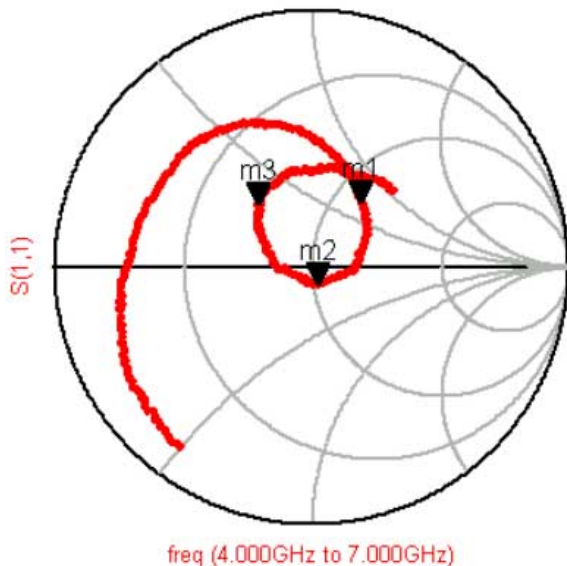
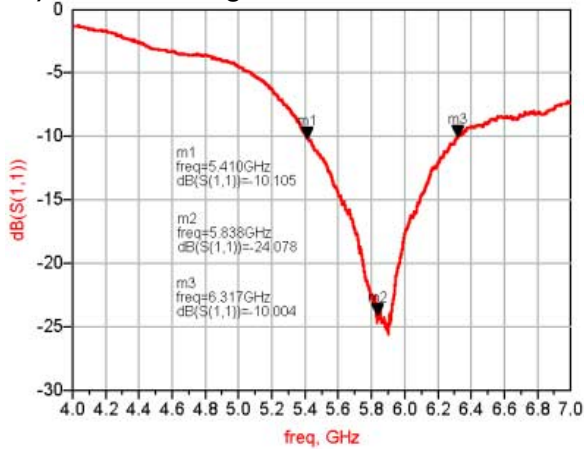
Detail Specification Page 2 of 3

### Test Board for Electrical Characteristic Measurements



Typical Return Loss for P/N 5775AT43A100

#### a) With Matching Circuit



# “High Frequency Ceramic Solutions”

## 5.77 GHz Chip Antenna

P/N 5775AT43A100

Detail Specification Page 3 of 3

Typical Radiation Patterns for P/N 5775AT43A100

