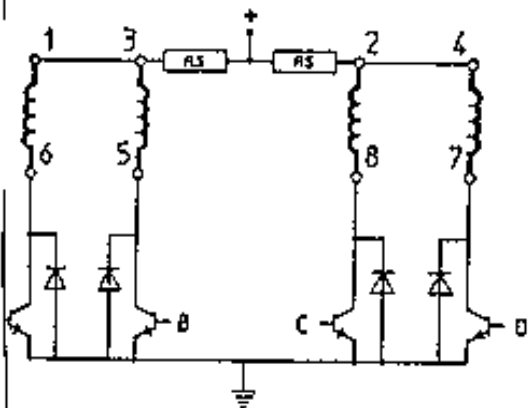




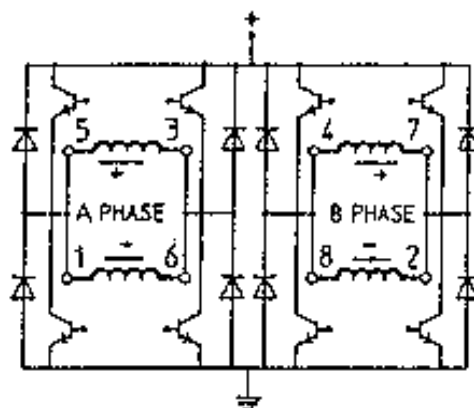
## Connection diagram

### UNIPOLAR



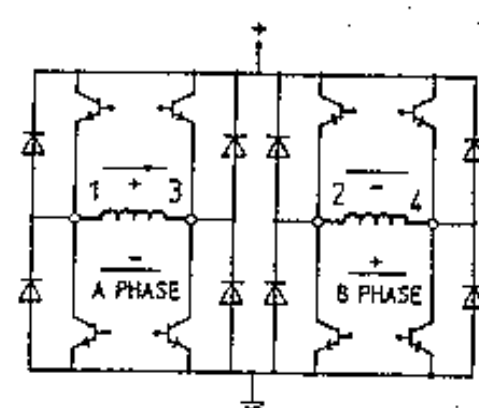
- 1=WHITE/BLACK      5=ORANGE
- 2=WHITE/RED        6=BLACK
- 3=WHITE/ORANGE    7=YELLOW
- 4=WHITE/YELLOW    8=RED

### BIPOLAR



- 1=WHITE/BLACK      5=ORANGE
- 2=WHITE/RED        6=BLACK
- 3=WHITE/ORANGE    7=YELLOW
- 4=WHITE/YELLOW    8=RED

### BIPOLAR



- 1=BLACK              3=ORANGE
- 2=YELLOW            4=RED

## Drive sequence

### UNIPOLAR

#### HALF-STEP

STEP	PHASES			
	A	B	C	D
1	+	0	0	+
2	+	0	0	0
3	-	0	+	0
4	0	0	+	0
5	0	+	+	0
6	0	+	0	0
7	0	-	0	+
8	0	0	0	+
1	+	0	0	+

#### FULL-STEP

STEP	PHASES			
	A	B	C	D
1	+	0	0	+
2	+	0	+	0
3	0	+	+	0
4	0	+	0	+
1	+	0	0	+

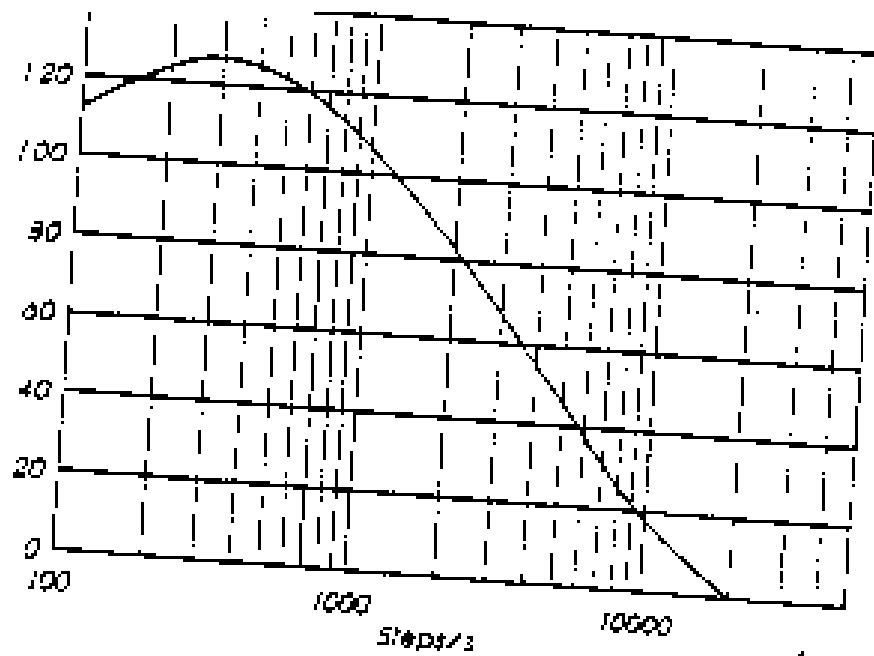
### BIPOLAR

#### HALF-STEP

STEP	PHASES	
	A	B
1	+	+
2	0	+
3	-	+
4	-	0
5	-	-
6	0	-
7	+	-
8	+	0
1	+	+

#### FULL-STEP

STEP	PHASES	
	A	B
1	+	-
2	+	+
3	-	+
4	-	-
1	+	-



DRIVE: BIPOLAR CHOPPER 65V - 2.4A/PH