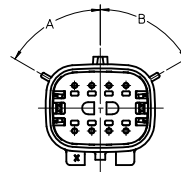
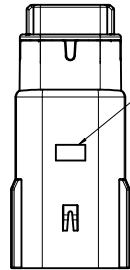


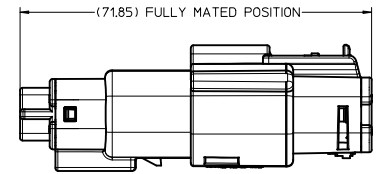
ASSEMBLY PART NUMBER	COLOR	KEYING OPTION	DIMENSIONS		CAVITY TYPE & STATUS (X = PLUGGED)															
			A	B	1	2	3	4	5	6	7	8								
33482-0801	BLACK	A	60	60																
33482-0802	LT.GRAY	B	25	60																
33482-0803	BROWN	C	60	25																
33482-0804	GREEN	D	25	25																
33482-0805	CUSTOM	TBD																		
33482-0806	BLACK	A	60	60									X							
33482-0807	LT.GRAY	B	25	60								X								
33482-0808	BROWN	C	60	25								X								
33482-0809	GREEN	D	25	25								X								
33482-0810	CUSTOM	TBD										X								
33482-0811	BLACK	A	60	60								X	X							
33482-0812	LT.GRAY	B	25	60								X	X							
33482-0813	BROWN	C	60	25								X	X							
33482-0814	GREEN	D	25	25								X	X							
33482-0815	CUSTOM	TBD										X	X							
33482-0816	BLACK	A	60	60	X							X	X							
33482-0817	LT.GRAY	B	25	60	X							X	X							
33482-0818	BROWN	C	60	25	X							X	X							
33482-0819	GREEN	D	25	25	X							X	X							
33482-0820	CUSTOM	TBD										X	X							
33482-0821	BLACK	A	60	60	X							X	X							X
33482-0822	LT.GRAY	B	25	60	X							X	X							X
33482-0823	BROWN	C	60	25	X							X	X							X
33482-0824	GREEN	D	25	25	X							X	X							X
33482-0825	CUSTOM	TBD										X	X							X
33482-0826	BLACK	A	60	60	X	X	X					X	X	X						X
33482-0827	BLACK	A	60	60								X	X							X
33482-0828	BLACK	A	60	60				X				X	X							X
33482-0829	BLACK	A	60	60			X	X	X	X	X	X	X							X
33482-0830	BLACK	A	60	60								X	X							X
33482-0831	BLACK	A	60	60				X				X	X							X
33482-0832	BLACK	A	60	60								X	X							X
33482-0833	BLACK	A	60	60	X			X	X	X	X	X	X	X						X
33482-0834	BLACK	A	60	60	X	X	X	X	X	X	X	X	X	X						X
33482-0835	BLACK	A	60	60								X	X							X
33482-0836	BLACK	A	60	60			X	X				X	X							X
33482-0837	BLACK	A	60	60	X						X	X								X
33482-0838	BLACK	A	60	60			X	X				X	X	X						X



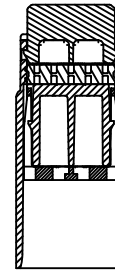
KEYING OPTION
SEE TABLE SCALE 2:1



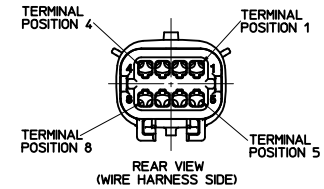
OPTIONAL TRACEABILITY
INFORMATION LOCATED IN
THIS AREA



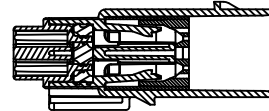
SCALE 1:1



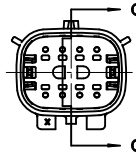
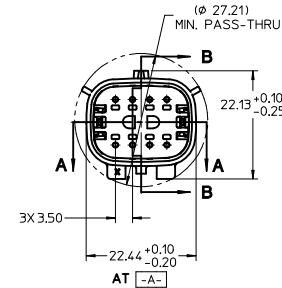
SECTION A-A



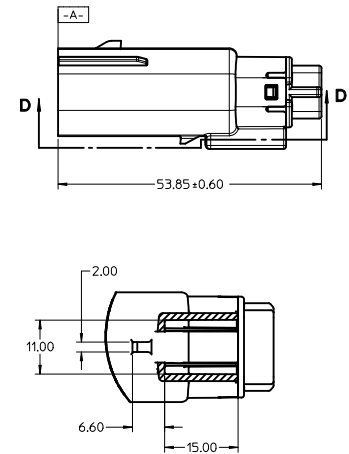
REAR VIEW
(WIRE HARNESS SIDE)



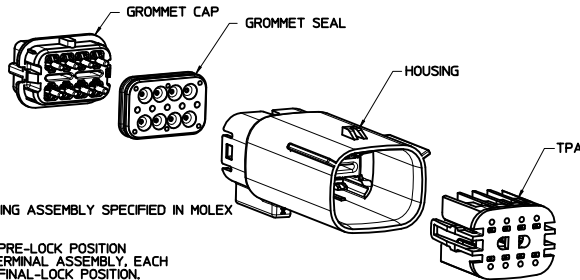
SECTION B-B
(BLADE SHOWN IN FULL-LOCK POSITION)
SEE NOTE 2



SECTION C-C
(BLADE SHOWN IN PRE-LOCK POSITION)
SEE NOTE 2



SECTION D-D



NOTES: UNLESS OTHERWISE SPECIFIED

- DESIGNED TO MATE WITH RECEPTACLE HOUSING ASSEMBLY SPECIFIED IN MOLEX CHARTED DRAWING SD-33472-081.
- ASSEMBLY SHIPPED WITH BLADE INSERT IN PRE-LOCK POSITION (SEE SECTION C-C PRE-LOCK). UPON FULL TERMINAL ASSEMBLY, EACH BLADE INSERT MUST BE SNAPPED INTO ITS FINAL-LOCK POSITION.
- FOR BLADE TERMINALS TO BE USED WITH THIS ASSEMBLY, SEE DRAWING SD-33000-001.
- SYSTEM TO BE USED WITH WIRE WITHIN DIAMETER RANGE OF 1.5mm TO 2.5mm.
- MATERIAL: SPS/NYLON BLEND, 20% GLASS FILLED.
- CHENGDU ASSEMBLIES SHALL CONFORM TO PACKAGING SPECIFICATION PK-31300-635
- SHALL CONFORM TO PRODUCT SPECIFICATION PS-33472-000.
- ASSEMBLY CONFORMS TO SAE/USCAR-2 REV 4 WITH THE FOLLOWING EXCEPTIONS:
TERMINAL INSERTION FORCE FOR WIRE SIZE ABOVE 2.5mm NOT EXCEEDING 2.69mm SHALL NOT EXCEED 45 NEWTONS.

ENTER DESCRIPTION IEC NO: UAU2010-1454 DRAWN BY: DRWN:AH01 CHECKED BY: CHYK:DR:FF:THS APPROV:IKOSHY 2010/02/04 2010/02/17 2010/02/17	QUALITY SYMBOLS	GENERAL TOLERANCES (UNLESS SPECIFIED)	DIMENSION STYLE	SCALE	DESIGN UNITS	THIRD ANGLE PROJECTION
	▽=0	mm INCH	MM ONLY	2:1	METRIC	☉
	▽=0	4 PLACES ± --- ± ---	DRAWN BY: DMARCOUX	DATE: 06-17-02	TITLE: MX150 BLADE CONNECTOR ASSEMBLY 2 ROW SEALED, 8 WAY	
	▽=0	2 PLACES ± 0.10 ± ---	CHECKED BY: DGRIFITHS	DATE: 06-17-02	MOLEX INCORPORATED	
	1 PLACE ± 0.3 ± ---	APPROVED BY: FHOLUB	DATE: 06-17-02	MATERIAL NO. SD-33482-081		SHEET NO. 1 OF 1
	ANGULAR ± 3 °	DRAFT WHERE APPLICABLE MUST REMAIN WITHIN DIMENSIONS				
		THIS DRAWING CONTAINS INFORMATION THAT IS PROPRIETARY TO MOLEX INCORPORATED AND SHOULD NOT BE USED WITHOUT WRITTEN PERMISSION				