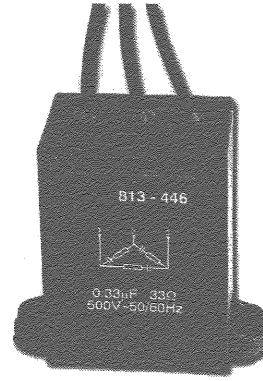


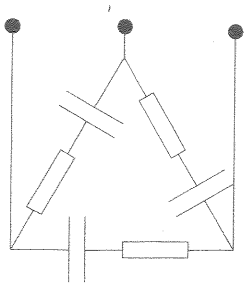
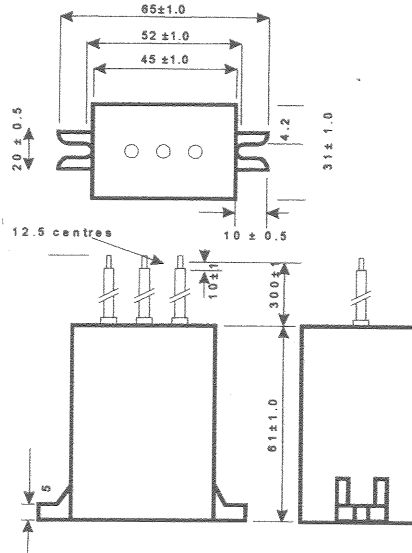
These resistor capacitor suppressors are designed to reduce contact arcing where inductive loads are involved, thereby increasing the life of their contacts.

They may also be used for reducing dv/dt across Thyristors or other solid state devices.



CHARACTERISTICS	
Capacitors :	0.01 - 0.33µF x 3
Capacitance Tolerance :	± 10 and 20%
Resistors :	47-470ohm ±30% 6watt x3
Operating Voltage :	500 V RMS (Max)
Supply Frequency :	50 / 60 Hz
Operating Temperature :	- 40°C to + 70°C
Insulation Resistance :	100 MΩ (500V)

PEAK PULSE CONDITIONS	
Peak to Peak Voltage :	1500 V (Max)
Repetition Frequency :	750 Hz (Max)



Circuit diagram, DELTA CONSTRUCTION

Other Capacitor / Resistor values, case shapes and terminations are available.

