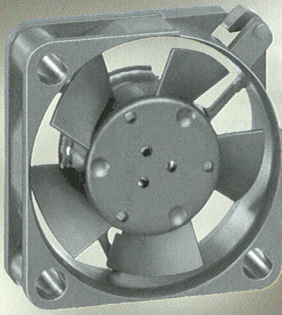


# DC Axial Fans

Series 250 25 x 25 x 8 mm



- DC micro-fans with electronically commutated external rotor motor. Fully integrated commutation electronics.
- With electronic protection against reverse polarity. The fan only operates when the polarity is correct. Impedance-protected against locking and overloading.
- Fan of fiberglass reinforced plastic. PBT housing, PA impeller.
- Air exhaust over struts. Rotational direction CCW looking at rotor.
- Electrical connection via 2 leads AWG 28. Stripped and tinned ends.
- Mass 5 g.

ebm-papst • St. Georgen

Nominal Data	Air Flow		Nominal Voltage	Voltage Range	Noise		Sinter-Sleeve Bearings Ball Bearings	Power Input	Nominal Speed	Temperature Range	Service Life L <sub>10</sub>		Curve	Specials
	m <sup>3</sup> /h	CFM			V DC	V DC					dB(A)	Bel		
255 M	2.1	1.2	5	4.5...5.5	5	< 3	■	0.2	6 000	-10...+70	45 000 / 14 000		1	
255 N	3.2	1.9	5	4.5...5.5	15	< 3	■	0.4	600	-10...+70	40 000 / 12 000		2	/2
255 H	4.5	2.6	5	4.5...5.5	23	4.4	■	0.6	12 000	-10...+55	35 000 / 10 000		3	/2
252 N	3.2	1.9	12	10...14	15	< 3	■	0.5	600	-10...+70	40 000 / 12 000		2	/2

