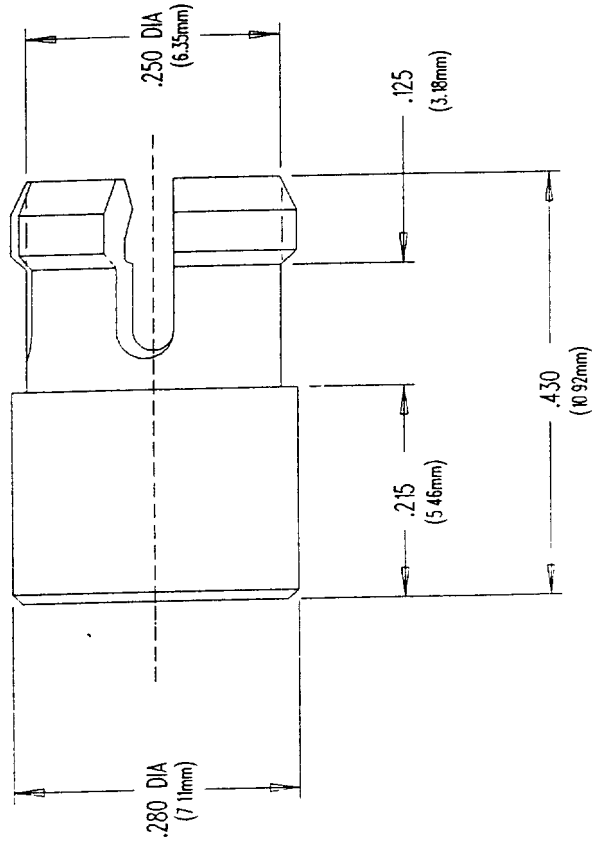
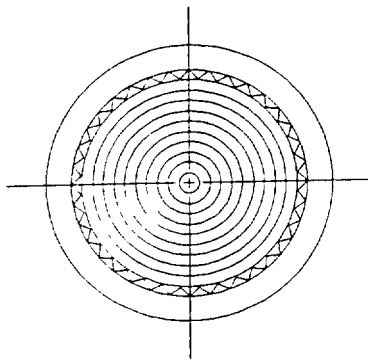


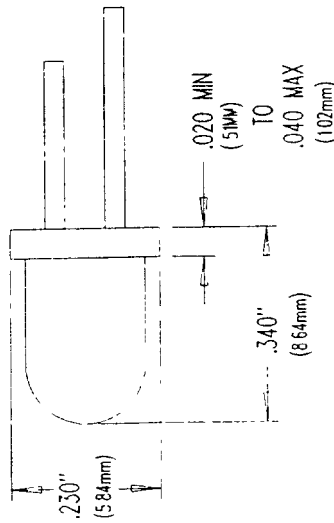
170-828 to 170-812



ACTUAL SIZE



RECOMMENDED LED
SIZE T-1 3/4



ORDERING CODES

MODEL CLF 280 RTP
COLOR

RTP Red Transparent BTP Blue Transparent
ATP Amber Transparent YTP Yellow Transparent
GTP Green Transparent CTP Clear Transparent

U.S. & Foreign Pat. Issued & Pend.

NOTES:

MATERIAL: Polycarbonate

DESIGN: Standard profile lens using fresnel rings and striated lines.

MOUNTING: Mounts thru the front of panel. Mounting holes should be deburred but not chamfered.
Lens mounts in a .250 ±.002 (6.35mm) hole on 3/8" centers
Panel thickness 1/16" to 1/8"
Standard metal or plastic washer can be used to increase panel thickness if necessary.

REVISIONS

NO	DESCRIPTION	DATE	BY
1			
2			
3			
4			
5			

TOLERANCES (EXCEPT AS NOTED)
DECIMAL ±.010
ANGLE ±.30°
DIAMETER .003 TIR
RADII .008 Max

CLIPLITE® CLF 280

VISUAL COMMUNICATIONS COMPANY, INC.

7820-G ARJONS DRIVE SAN DIEGO, CA 92128 U.S.A. (619) 549-8900

DRAWN BY	SCALE	MATERIAL	See Notes
JMS	5 X		
CHK'D	DATE	DRAWING NO	
	10/25/85		
TRACED	APP'D		
			CLF280A