

# ADAM-6052

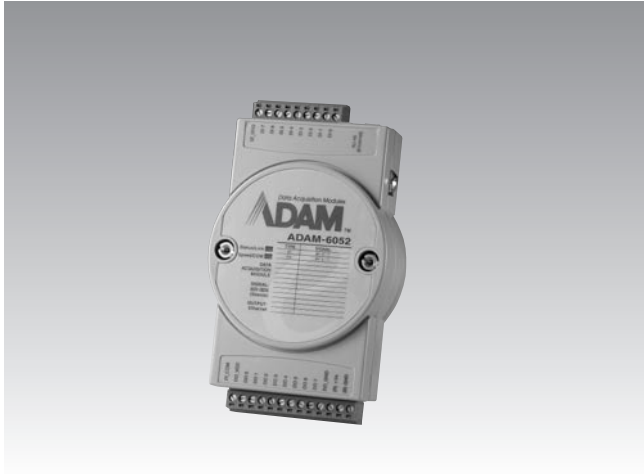
# ADAM-6060

# ADAM-6060W

16-ch Source-type Isolated Digital I/O Module

6-ch Digital Input and 6-ch Relay Module

6-ch Wireless Digital Input and 6-ch Relay Module



ADAM-6052



## Specifications

### General

- LAN 10/100 Base-T

### Digital Input

- Channels 8
- Dry Contact Logic level 0: close to GND  
Logic level 1: open
- Wet Contact Logic level 0: 0 ~ 3 V<sub>DC</sub>  
Logic level 1: 10 ~ 30 V<sub>DC</sub>

### Digital Output

- Channels 8
- Digital Output 10 ~ 35 V<sub>DC</sub> (Source Type)
- Current 1 A (per channel)
- Supports 5 kHz Pulse Output
- Supports Over Current Protection

## Ordering Information

- ADAM-6052 16-ch Source-type Isolated DI/O Module



ADAM-6060

ADAM-6060W



## Specifications

### General

- LAN ADAM-6060: 10/100 Base-T  
ADAM-6060W: IEEE802.11b WLAN

### Digital Input

- Channels 6
- Dry Contact Logic level 0: close to GND  
Logic level 1: open
- Wet Contact Logic level 0: 0 ~ 3 V<sub>DC</sub>  
Logic level 1: 10 ~ 30 V<sub>DC</sub>

### Relay Output (Form A)

- Channels 6
- Contact Rating AC: 120 V @ 0.5 A  
DC: 30 V @ 1 A
- Breakdown Voltage 500 V<sub>AC</sub> (50/60 Hz)
- Relay On Time 7 ms
- Relay Off Time 3 ms
- Total Switching Time 10 ms
- Insulation Resistance 1 GΩ min. at 500 V<sub>DC</sub>
- Maximum Switching Rate (at rated load) 20 operations/minute
- Supports Pulse Output

## Ordering Information

- ADAM-6060 6-ch DI and 6-ch Relay Module
- ADAM-6060W 6-ch Wireless DI and 6-ch Relay Module

## Common Specifications

### General

- Power Consumption 2 W @ 24 V<sub>DC</sub>
- Watchdog System (1.6 second) and Communication (programmable)
- Power Input Unregulated 10 ~ 30 V<sub>DC</sub>
- Supports Peer-to-Peer
- Supports GCL (ADAM-6052 and ADAM-6060)
- Supports Modbus/TCP, TCP/IP, UDP and HTTP Protocol

### Digital Input

- Supports 3 kHz Counter Input (32-bit + 1-bit overflow)
- Supports 3 kHz Frequency Input
- Supports Inverted DI Status

### Digital Output

- Supports High-to-Low and Low-to-High Delay Output

### Protection

- Power Reversal Protection
- Isolation Protection 2000 V<sub>DC</sub>

### Environment

- Operating Temperature ADAM-6052 and ADAM-6060: -10 ~ 70° C  
ADAM-6060W: -10 ~ 60° C
- Storage Temperature -20 ~ 80° C
- Humidity ADAM-6052 and ADAM-6060:  
Operating: 20 ~ 95% RH (non-condensing)  
Storage: 0 ~ 95% RH (non-condensing)  
ADAM-6060W: 5 ~ 95% RH (noncondensing)