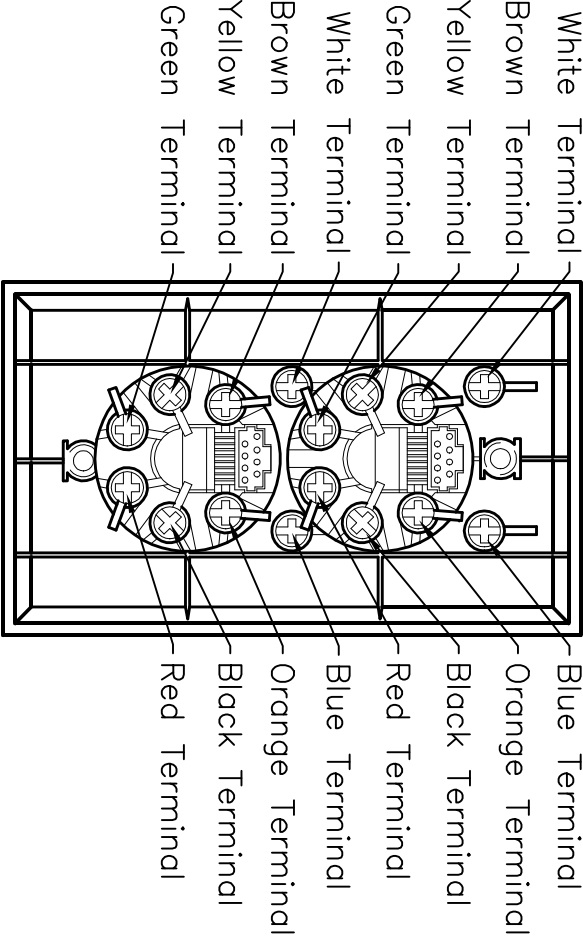
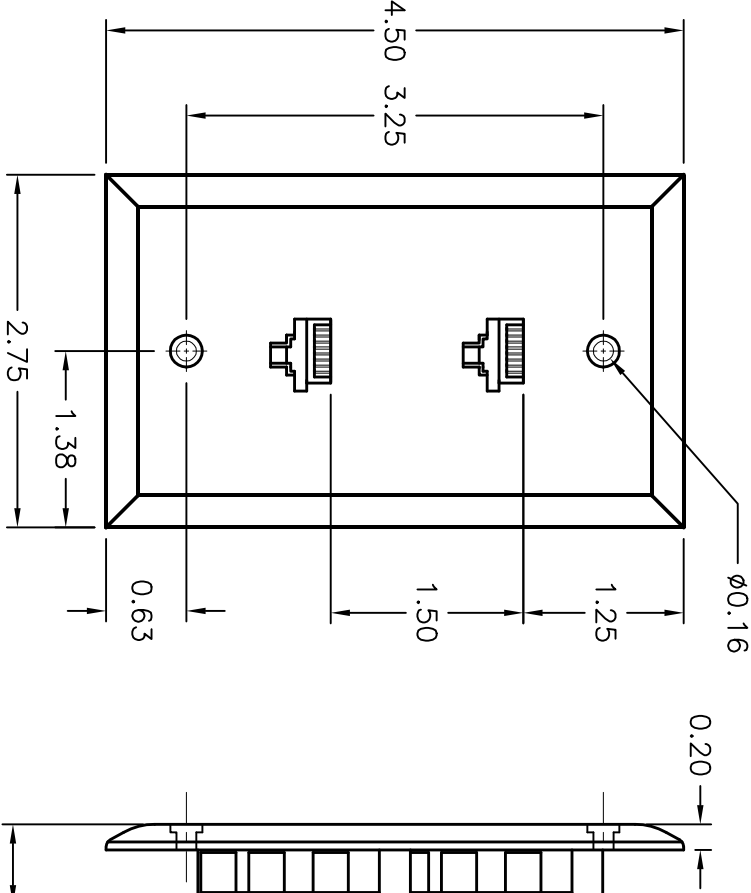


ALL RIGHTS RESERVED. NO PORTION OF THIS PUBLICATION, WHETHER IN WHOLE OR IN PART CAN BE REPRODUCED WITHOUT THE EXPRESS WRITTEN CONSENT OF SPC TECHNOLOGY.

REVISIONS			DOC. NO. SPC-F005 * Effective: 12/21/98 * DCP No: 680					
DCP #	REV	DESCRIPTION	DRAWN	DATE	CHECKD	DATE	APPRVD	DATE
788	A	RELEASED	HYO	3/9/01	JC	9/11/01	DJC	9/24/01



SPECIFICATIONS:

1. CONNECTOR: KEYED 8 POSITION / 8 CONDUCTOR
2. LEADWIRE: 26 AWG, 7 STRAND LEADWIRE COLORS: BLACK, RED, GREEN, YELLOW, BROWN, WHITE, ORANGE, BLUE
3. SPRING WIRE: .45mm (0.018 in) DIAMETER, PHOSPHOROUS BRONZE ALLOY
4. HOUSING MATERIAL: ABS AND POLYCARBONATE
5. COLOR: WHITE
6. HARDWARE: (2) #8-32 MACHINE SCREWS

7. INSULATION RESISTANCE: ≥ 500 MEGOHMS
8. DIELECTRIC STRENGTH: 500 V AC RMS, 60 Hz
9. CONTACT RESISTANCE: ≤ 15 MILLIOHMS
10. CURRENT RATING: 1-1/2 AMPS
11. RETENTION FORCE: 76 N (17 lbs)
12. CRIMPING STRENGTH: 2.0 Kg (4.4 lbs)

DISCLAIMER:
ALL STATEMENTS AND TECHNICAL INFORMATION CONTAINED HEREIN ARE BASED UPON INFORMATION AND/OR TESTS WE BELIEVE TO BE ACCURATE AND RELIABLE. SINCE CONDITIONS OF USE ARE BEYOND OUR CONTROL, THE USER SHALL DETERMINE THE SUITABILITY OF THE PRODUCT FOR THE INTENDED USE AND ASSUME ALL RISK AND LIABILITY WHATSOEVER IN CONNECTION THEREWITH.



UNLESS OTHERWISE SPECIFIED, DIMENSIONS ARE FOR REFERENCE PURPOSES ONLY.

DRAWN BY:	DATE:
HISHAM ODISH	3/9/01
CHECKED BY:	DATE:
JOHN COLE	9/11/01
APPROVED BY:	DATE:
DANIEL CAREY	9/24/01

DRAWING TITLE:
Molded Plastic, 8 Con. Dual Telephone Wall Plate

SIZE	DWG. NO.	ELECTRONIC FILE	REV
A	8588-0070	52N9427.DWG	A
SCALE:	NTS	U.O.M.: INCHES	SHEET: 1 OF 1