



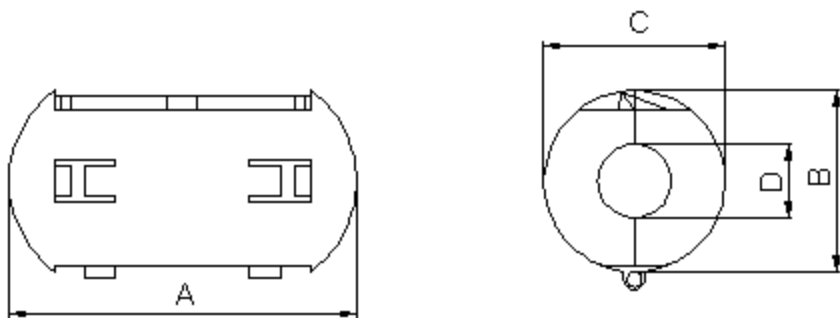
PART NO.

LF-35B

## REVISIONS

ECN #	REV	DESCRIPTION	DRAWN	DATE	CHECKD	DATE	APPRVD	DATE
-	A	RELEASED	S. R	8/5/06	K. S	8/5/06	N. K	22/5/06

## Hinged Clamp Cores



## Features:

- A range of easy to fit data line filters providing a simple solution to the problems of radiated noise emissions generated by electronic equipment.
- The filter simply clips around the cable to be shielded and locks closed with no need to disconnect the cable or remove connectors.
- No grounding is required unlike cable shields.

## Specifications:

Frequency range	: 10MHz to 300MHz.
Insulation resistance	: 10M $\Omega$ (minimum) between case and cores.
Case material	: Black nylon 66.

## Dimensions

	A	B	C	D
Maximum	25.2 $\pm$ 1.0	14.7 $\pm$ 1.0	14.5 $\pm$ 1.0	3.8 $\pm$ 0.7
Typical	24.89	14.93	14.77	3.93

Dimensions : Millimetres

This data sheet and its contents (the "Information") belong to the Premier Farnell Group (the "Group") or are licensed to it. No licence is granted for the use of it other than for information purposes in connection with the products to which it relates. No licence of any intellectual property rights is granted. The Information is subject to change without notice and replaces all data sheets previously supplied. The Information supplied is believed to be accurate but the Group assumes no responsibility for its accuracy or completeness, any error in or omission from it or for any use made of it. Users of this data sheet should check for themselves the Information and the suitability of the products for their purpose and not make any assumptions based on information included or omitted. Liability for loss or damage resulting from any reliance on the Information or use of it (including liability resulting from negligence or where the Group was aware of the possibility of such loss or damage arising) is excluded. This will not operate to limit or restrict the Group's liability for death or personal injury resulting from its negligence. MULTICOMP is the registered trademark of the Group. © Premier Farnell plc 2004.

## TOLERANCES:

UNLESS OTHERWISE SPECIFIED, DIMENSIONS ARE FOR REFERENCE PURPOSES ONLY.

DRAWN BY:

S. Ram

DATE:

08/05/06

CHECKED BY:

K. Suresh

DATE:

08/05/06

APPROVED BY:

N. Kiwomya

DATE:

22/05/06

DRAWING TITLE:

LF Series - Hinged Clamp Cores

SIZE  
A

DWG NO.

M10000204

ELECTRONIC FILE  
204024\_4\_DWGREV  
A

SCALE: NTS

U.O.M.: mm

SHEET: 1 OF 3



SHEET: 3 OF 3