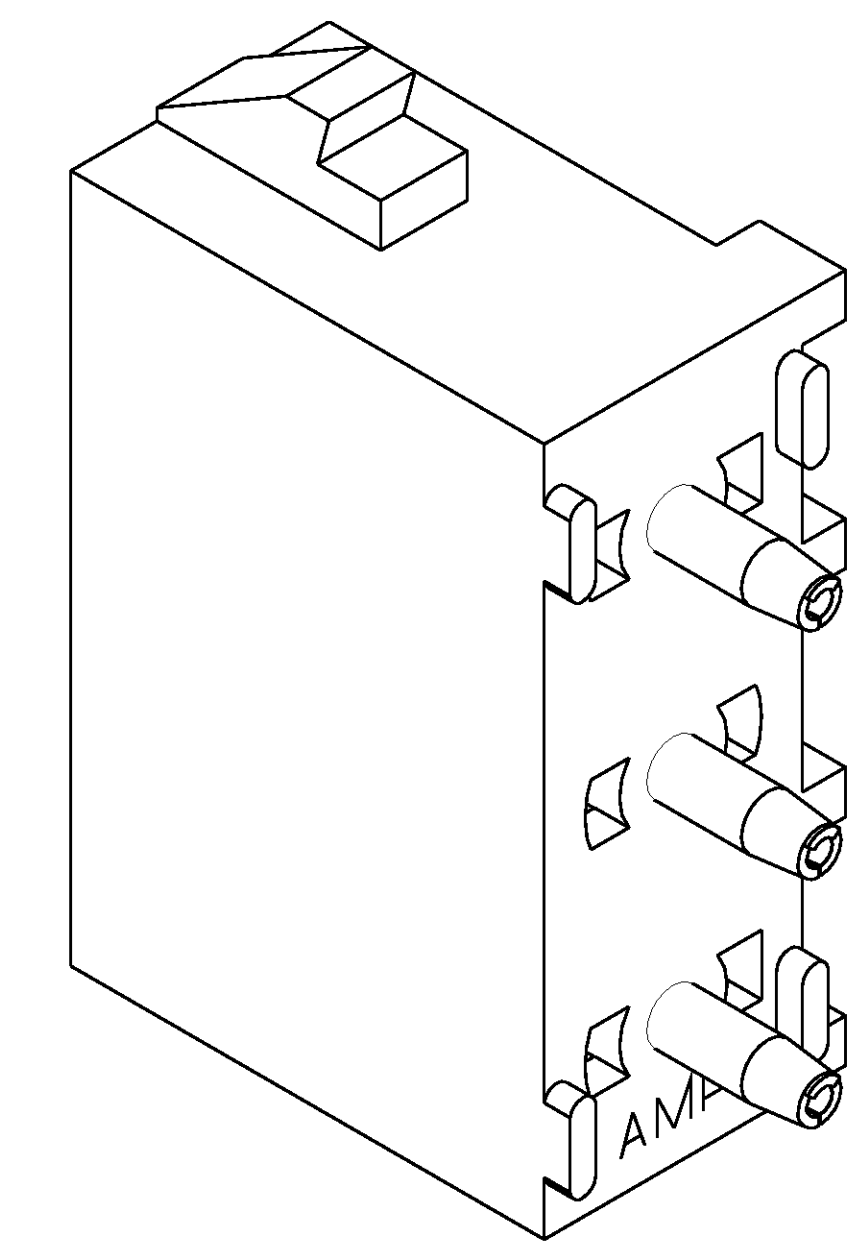
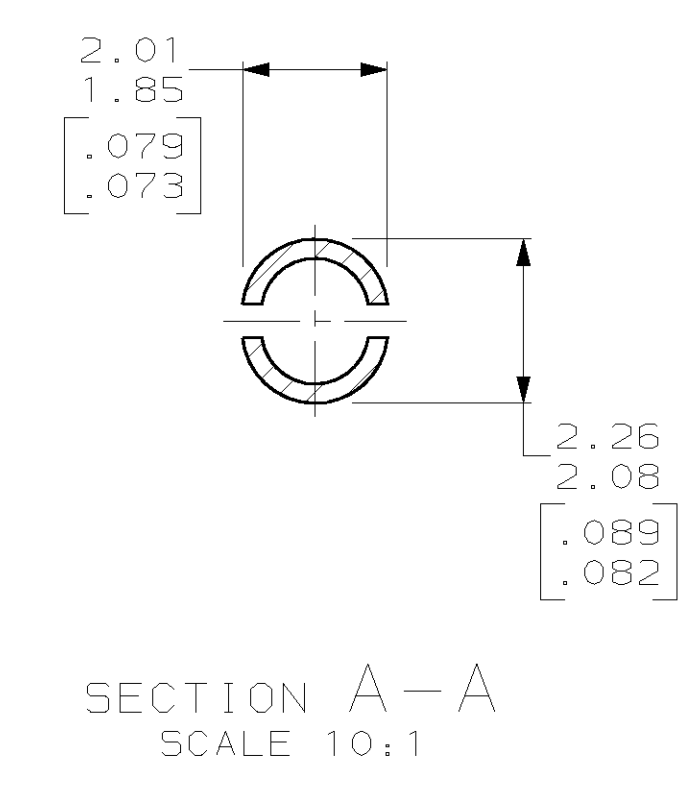
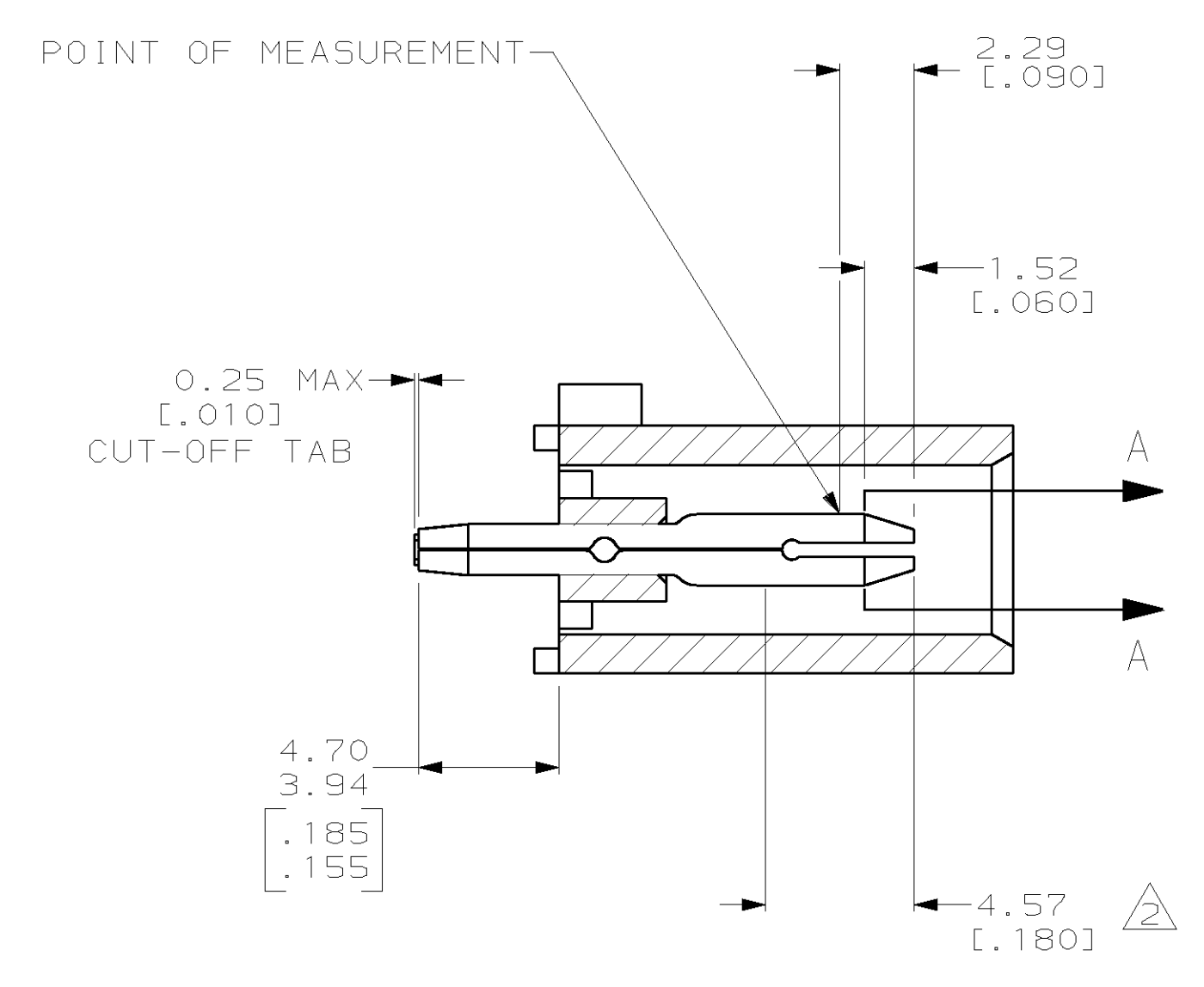
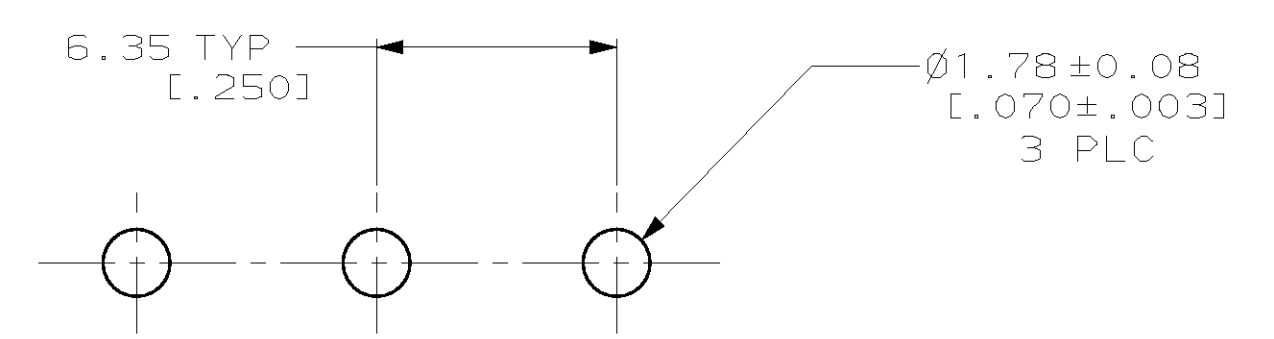


- PARTS COMPLY TO AMP SOLDERABILITY SPECIFICATION 109-11-3.
- CONTACT IS PLATED OVERALL WITH 0.00127 [0.00050] NICKEL, THEN 0.00076 [0.00030] GOLD OVER CONTACT LENGTH INDICATED AND MATTE TIN ON SOLDER TAIL END.
- CIRCUIT IDENTIFICATION CHARACTERS ARE ADJACENT TO THE INDICATED CAVITIES, BUT LOCATION AND ORIENTATION MAY DIFFER FROM PRINT.
- DIMENSIONS IN BRACKETS ARE IN INCHES.



3-DIMENSIONAL MODEL
NTS



RECOMMENDED MOUNTING HOLE PATTERN
FOR 1.57 [.062] THICK P.C. BOARD

PHOSPHOR BRONZE, GOLD	NYLON, UL94V-2, NATURAL	350429-2
PHOSPHOR BRONZE, PRE-TIN	NYLON, UL94V-2, NATURAL	350429-1
PIN CONTACT MATERIAL AND FINISH	HOUSING MATERIAL	PART NO

THIS DRAWING IS A CONTROLLED DOCUMENT.		DWN D. LEWIS 8-19-98	AMP Incorporated Harrisburg, PA 17105-3608
DIMENSIONS mm (INCHES)		CHK R. SWING 8-19-98	NAME M. TRULL 8-19-98
TOLERANCES UNLESS OTHERWISE SPECIFIED:		APVD M. TRULL 8-19-98	PRODUCT SPEC
0 PLC	±	APPLICATION SPEC	SIZE A1
1 PLC	±	WEIGHT	CAGE CODE 00779
2 PLC	±0.13 (.005)	CUSTOMER DRAWING	DRAWING NO C-350429
3 PLC	±	SCALE 5:1	SHEET 1 OF 1
4 PLC	±	REV W	
ANGLES	40°-30°		
MATERIAL	SEE TABLE		
FINISH	SEE TABLE		

