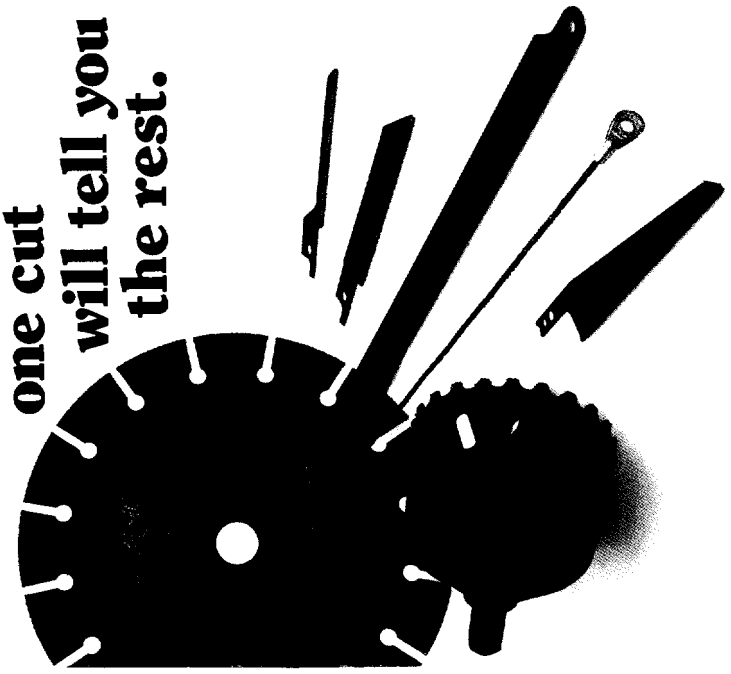


483-620

One look will tell you the difference, one cut will tell you the rest.



"Grit-Edge" blades cut materials conventional blades can't.

And custom capabilities, too!

RemGrit welcomes your comments, questions and requests for solutions to any cutting problem you encounter! Tools for difficult cutting are our primary business and we've made an aggressive commitment to applying "Grit-Edge" technology to a broad scope of applications.

"Grit-Edge" blade selection.

Matching the blade to the work is easier with "Grit-Edge" because fewer blades do more work. So there aren't as many blades to choose from! And that makes life easier — especially when it comes to bandsaw blade selection for your industrial cutting needs. Simply pick the size and type blade you need to fit your saw. Then, pick a fine, medium or coarse grit. The finer the grit, the finer the finish; the coarser the grit, the more aggressively the blade will cut through thick materials. Medium grit offers a compromise between cutting rate and workpiece finish. And that's all there is to it!

RemGrit™

Corporation
939 Barnum Avenue
Bridgeport, CT 06608
(203) 336-2525

A MEMBER OF
The InterTech Group

"Grit-Edge" and RemGrit are trademarks of the RemGrit Corporation.



They take the teeth out of the competition!

Compare the cutting power! "Grit-Edge" blades keep cutting in materials that cause most conventional toothed saw blades to fail.

Material to be cut	"Grit-Edge" blades	Conventional blades
Fiber reinforced cement	✓	✓
Beryllium	✓	✓
Brick	✓	✓
Carbon	✓	✓
Cast iron	✓	✓
Composites	✓	✓
Composition board	✓	✓
Fiberglass (FRP)	✓	✓
Foamed glass	✓	✓
Friction materials	✓	✓
Glass	✓	✓
Hardened steel	✓	✓
Hardwood flooring	✓	✓
Marble (natural)	✓	✓
Marble (synthetic)	✓	✓
Plaster	✓	✓
Plastic laminates	✓	✓
Plywood	✓	✓
Sheet steel (to 16ga)	✓	✓
Slate	✓	✓
Stainless steel	✓	✓
Stranded cable	✓	✓
Super alloys (iron)	✓	✓
Super alloys (nickel)	✓	✓
Tempered hardboard	✓	✓
Titanium	✓	✓
Tile (ceramic)	✓	✓

"Grit-Edge" blades from RemGrit™

Proving what looks naughty really is.

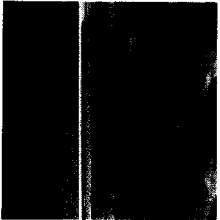
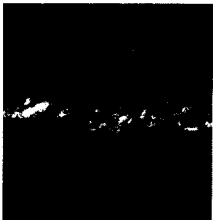
The "Grit-Edge" blades have one mean, nasty-looking cutting surface. Thousands of tiny tungsten carbide particles — one of the hardest materials known — are permanently bonded to alloy steel. The result is a superior cutting edge that handles jobs from mild to wild — from composition board to glass, sheet metal to slate, ceramic tile and marble. There are no teeth to dull, break or strip. And "Grit-Edge" will outlast conventional blades even on the toughest materials.

An idea so strong, it can stand alone!

Now "Grit-Edge" technology has cut out on its own! "Grit-Edge" blades are now the leading product of the new RemGrit Corporation.

And what better line could an eager young company have than "Grit-Edge"! The engineering is simply unsurpassed. And it's easy to understand why when you know who developed "Grit-Edge" blades. Remington. With its reputation for exceptional metallurgy. And DuPont. Internationally known for technological breakthroughs.

But today's "Grit-Edge" blades are just the beginning of what you can expect from RemGrit. We're working right now to extend the patented "Grit-Edge" tungsten carbide bonding technology to exciting new products. Soon you'll look to RemGrit for best results no matter what material you're cutting!



"Grit-Edge" tungsten carbide blades cut where other blades just can't compete!

Hard. Abrasive. Brittle. Snaggy. "Grit-Edge" blades cut such a wide variety of tough-to-saw materials, they extend the range of sawing equipment in the field and at the shop. For example, a "Grit-Edge" rod saw mounted in a standard hacksaw frame can often replace cable cutters, bolt cutters, acetylene torches, shears, glass cutters, files, abrasive wheels, chisels and even diamond blades!

Solid "Grit-Edge" advantages!

Cuts longer.

Almost as hard as diamond blades, but much less expensive, "Grit-Edge" tungsten carbide blades outlive ordinary toothed blades by a wide margin! They resist dulling and gain longer life because they cut on both the forward and reverse strokes. The direction of travel can even be reversed on "Grit-Edge" rod saw, hacksaw and circular saw blades.

Cuts more for less.

"Grit-Edge" blades cost less to use over the long run, though they initially cost more. Cost per cut is exceptionally low because "Grit-Edge" blades simply don't want to quit! Over the course of months, "Grit-Edge" can save so much blade changing downtime that it can be measured in days. And since time is money, that makes "Grit-Edge" even more economical.

Cuts smoother.

Still another economy can be realized by the characteristically smooth cuts produced by "Grit-Edge" blades. Their tungsten carbide particles have a "sanding" effect that can often eliminate finishing steps when materials such as honeycomb and veneered panels are being cut. "Grit-Edge" blades can even contour expensive counter top materials without chipping!

Won't chatter; won't shatter.

Because "Grit-Edge" blades have no teeth to bind or snag, vibration is minimized. Permanent bonding of the tungsten carbide chips to tough alloy steel means "Grit-Edge" blades won't snap under stress — they're virtually unbreakable and consequently, extremely safe to use!

All the blade types you need.

Rod saw, hacksaw, saber saw, reciprocating saw, hole saw, circular saw and even portable bandsaw blades. In sizes to fit standard sawing equipment. In fine, medium and coarse grits to match the difficulty of the work. And all, of course, with the superior "Grit-Edge" tungsten carbide cutting edge!

Prove it to yourself!

Write us on your company letterhead. Once your application is qualified, we'll rush you a free "Grit-Edge" sample. We think you'll be impressed with the quality and capability.

