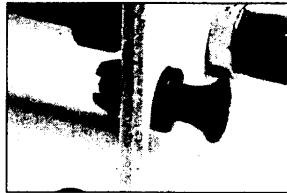
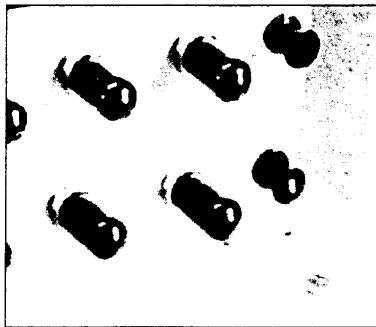
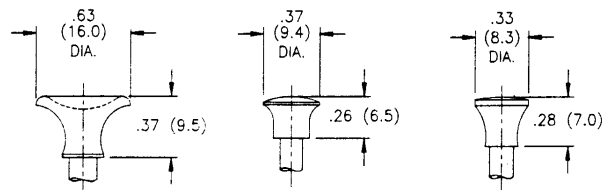
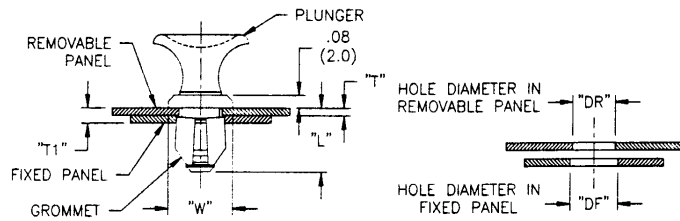


RIVETS, BUMPERS & FEET

SLPL/SLPB/SLG Series Snap Latch



LATCHED POSITION



PLUNGER HEAD STYLES

SLPL-1L/SLPL-2L

SLPB-1L

SLPB-2M/SLPB-3M

NOTE:
Plunger and Mating Grommet sold separately

Material: Plunger- Nylon 6, RMS-62 • Grommet - Polycarbonate, RMS-72 • Color: Black or White.

Part No.				Standard Pack: 1000 per bag					
Plunger		Mating Grommet		Removable Panel Thickness "T"(Max.)	Total Panel Thickness Range "T"	Removable Panel Hole Dia. Range "DR"	Fixed Panel Hole Dia. Range "DF"	"L" Ref."	"W" ±.010 (0.25)
Black	White	Black	White						
SLPL-1L-B	SLPL-1L-W	SLG-1L-B	SLG-1L-W	.062 (1.57)	.079 (2.0) - .165 (4.2)	.295 (7.5) - .303 (7.7)	.315 (8.0) - .323 (8.2)	.354 (9.0)	.425 (10.8)
SLPB-1L-B	SLPB-1L-W	SLG-1L-B	SLG-1L-W	.100 (2.54)	.118 (3.0) - .205 (5.2)			.394 (10.0)	
SLPL-2L-B	SLPL-2L-W	SLG-2L-B	SLG-2L-W	.062 (1.57)	.079 (2.0) - .165 (4.2)	.234 (5.95) - .240 (6.1)	.250 (6.35) - .256 (6.5)	.334 (8.5)	.334 (8.5)
SLPB-2M-B	SLPB-2M-W	SLG-2M-B	SLG-2M-W	.098 (2.50)	.118 (3.0) - .205 (5.2)			.374 (9.5)	

SRT Series Snap Rivet, T-Type



Features

- Push/pull knob lets rivet snap in and out up to 25 times

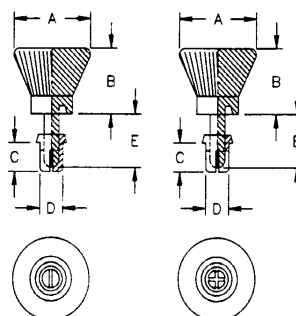
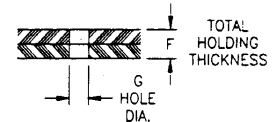


FIG. 1

FIG. 2



Material: Nylon 6, RMS-28 or RMS-62 (see table) • Color: Black

Part No.	Standard Pack: 1000 per bag							Fig No.	RMS
	Hole Dia. "G"	Thickness "F"	"A"	"B"	"C"	"D"	"E"		
SRT-3035B		.039 (1.0) - 0.079 (2.0)			.14 (3.6)				
SRT-3045B		.079 (2.0) - 0.118 (3.0)			.18 (4.6)		.26 (6.6)		
SRT-3055B	.122 (3.1) - .126 (3.2)	.118 (3.0) - 0.157 (4.0)			.22 (5.6)	.118 (3.0)		1	
SRT-3065B		.157 (4.0) - 0.197 (5.0)			.26 (6.6)		.35 (8.9)		62
SRT-3080B		.217 (5.5) - 0.256 (6.5)		.394 (10.0)	.32 (8.1)				
SRT-3545B		.079 (2.0) - 0.118 (3.0)			.18 (4.6)		.26 (6.6)		
SRT-3555B	.142 (3.6) - .146 (3.7)	.118 (3.0) - 0.146 (3.7)			.22 (5.6)	.139 (3.5)			
SRT-3570B		.150 (3.8) - 0.205 (5.2)			.28 (7.1)		.35 (8.9)		28
SRT-4050B		.098 (2.5) - 0.138 (3.5)			.20 (5.1)		.30 (7.6)	2	62
SRT-4060B		.138 (3.5) - 0.177 (4.5)			.24 (6.1)				
SRT-4070B		.177 (4.5) - 0.216 (5.5)		472 (12.0)	.28 (7.1)	.157 (4.0)			
SRT-4080B	.161 (4.1) - .165 (4.2)	.216 (5.5) - 0.256 (6.5)			.32 (8.1)		.44 (11.2)		28
SRT-4100B		.295 (7.5) - 0.335 (8.5)			.39 (9.9)				62

Part available in white by special order. To order, replace "B" with "W".