

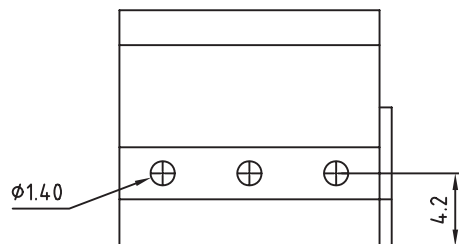
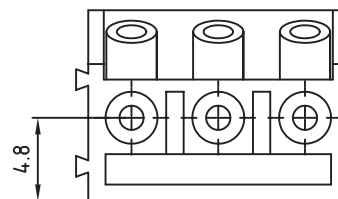
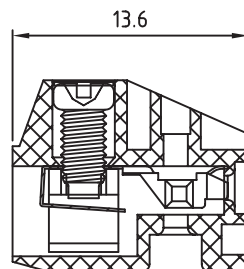
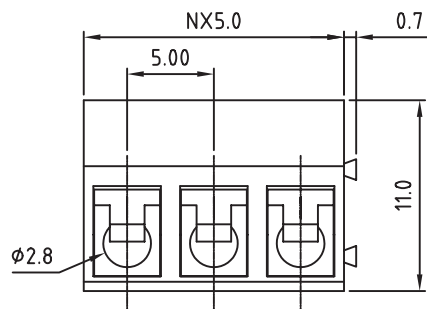
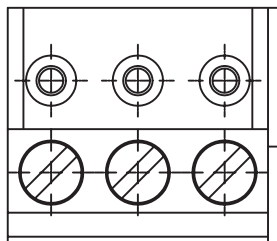
1

2

3

4

5



#### TECHNICAL CHARACTERISTICS

##### MATERIAL

INSULATOR: NYLON 66  
 MAX TEMPERATURE: WAVE SOLDERING COMPATIBLE  
 COLOR: BLUE  
 METAL HOUSING: BRASS (CuZn)  
 TERMINAL SCREW: STEEL ZINC PLATING "-" SLOT TYPE  
 WIRE GUARD: PhBz

##### ENVIRONMENTAL

OPERATING TEMPERATURE: -30 UP TO 105°C  
 FLAMABILITY RATING: UL94-V0  
 COMPLIANCE: LEAD FREE AND ROHS

##### ELECTRICAL

	cULus	VDE
CURRENT RATING:	15A	12A
WORKING VOLTAGE:	300VAC	300VAC
WITHSTANDING VOLTAGE:	1.6KV	2.5KV

##### MECHANICAL

SOLID WIRE:	14-22 AWG	0.34-1.5MM <sup>2</sup>
STRANDED WIRE:	14-22 AWG	0.34-1.5MM <sup>2</sup>
TORQUE :	3.5Lb.In	0.4Nm

WIRE STRIPE LENGTH: 5-6MM

SCREW: M2.6

PITCH: 5.0MM

SOLDERING: WAVE PROCESS ONLY

PACKAGING  
BOX

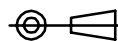
SERIE 301

CERTIFICATION



RoHS Compliant

PROJECTION:



GENERAL TOLERANCE

.X = +/- 0.2

.XX = +/- 0.15



APPROVAL: RJ

UNIT: MM

SCALE:

SHEET: 1/1

DRAW: MARVIN

DESCRIPTION: 5.0MM MODULAR BLUE PLUG HORIZONTAL ENTRY  
WITH RISING CAGE CLAMP

WERI PART NO: 691 301 710 0xx

SIZE

**A4**

G			
F			
E			
D			
C			
B			
A	30-OCT-07	PDF	EC
REV	DATE	FILE	BY