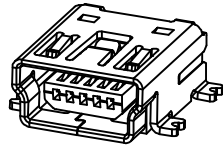


**REVISION P**

DO NOT SCALE FROM THIS PRINT



MUSB-05-X-B-SM-A-XX

NO. OF CONTACTS

-05

PLATING

-F: FLASH GOLD ON MATING AREA, BRIGHT ACID TIN ON TAILS WITH NICKEL UNDERPLATING

-S: .000030" GOLD ON MATING AREA, BRIGHT ACID TIN ON TAILS WITH NICKEL UNDERPLATING

OPTION

-TR: TAPE & REEL PACKAGING (LEAVE BLANK FOR TRAY PACKAGING)  
-K: KAPTON PAD

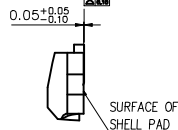
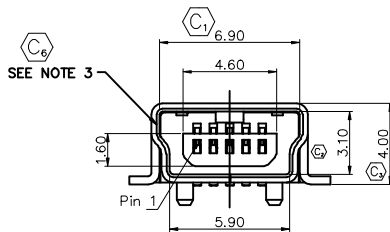
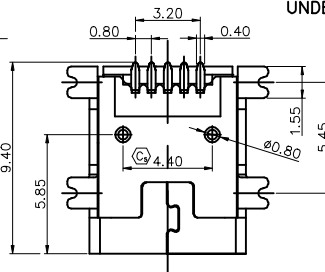
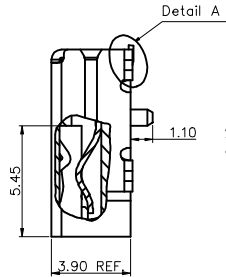
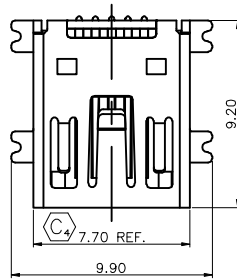
ALIGNMENT PINS

RA TERMINATION

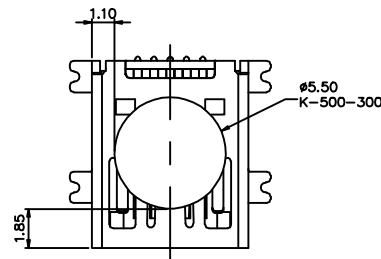
-SM\* SURFACE MOUNT

TYPE

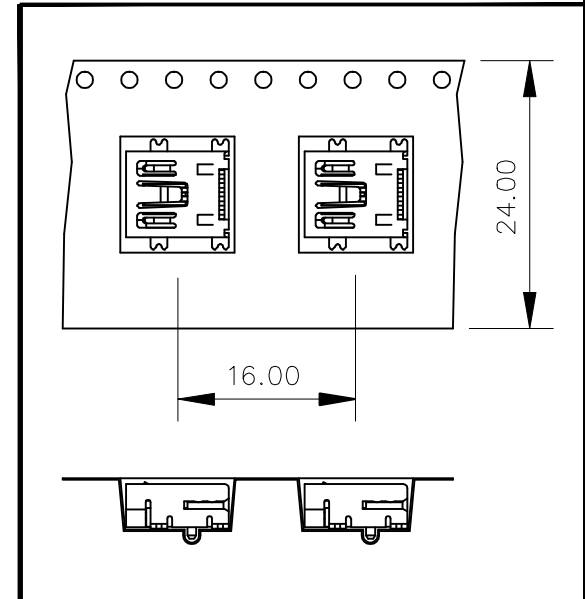
-B



DETAIL A  
SCALE 2:1

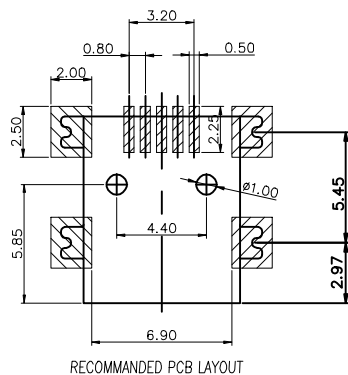


KAPTON PAD PLACEMENT



USER DIRECTION OF UNREELING ———  
POCKET NOT DETAILED

—TR: TAPE & REEL OPTION



RECOMMENDED PCB LAYOUT

NOTES:

1.  $\text{C}$  REPRESENTS CRITICAL DIMENSION.
2. NOTE DELETED.
3. CONFIRM THAT PARTS FACE MATCH THIS PRINT.
4. ALL PARTS ROHS COMPLIANT AS OF REVISION M.

UNLESS OTHERWISE SPECIFIED, DIMENSIONS ARE IN MILLIMETERS TOLERANCES ARE:

DECIMALS ANGLES  
.X:  $\pm 0.15$  3'  
.XX:  $\pm 0.08$   
.XXX:  $\pm 0.03$

**PROPRIETARY NOTE**  
THIS DOCUMENT CONTAINS INFORMATION CONFIDENTIAL AND PROPRIETARY TO SAMTEC INC. AND SHALL NOT BE REPRODUCED OR TRANSFERRED TO OTHER DOCUMENTS OR DISCLOSED TO OTHERS OR USED FOR ANY PURPOSE OTHER THAN THAT FOR WHICH IT WAS OBTAINED WITHOUT THE EXPRESSED WRITTEN CONSENT OF SAMTEC INC.

DO NOT SCALE DRAWING  
INSULATOR: PA9T, RATED UL 94V-0, BLACK  
CONTACT: PHOS BRONZE  
SHELL: STEEL, NICKEL PLATED

SHEET SCALE: 1:2

MAX FLASH ALLOWED: .051  
MAX GATE VESTIGE: .051

F:\DWG\EXISPROD\ASSEMBLY\10\USB

**samtec**

520 PARK EAST BLVD. NEW ALBANY, IN 47150  
(812) 944-6733 P.O. BOX 1147 TWX: 810-540-4085

DESCRIPTION:  
Mini USB, RA, 5 Pin, Type B, Single, SMT

DWG. NO.  
MUSB-05-X-B-SM-A-X-XX

BY: J. WOOL 12/26/03 SHEET 1 OF 1

CODE: 55322