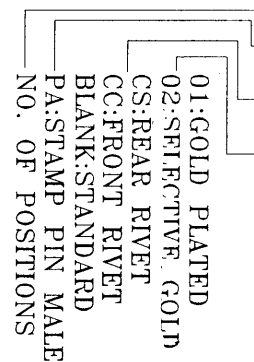


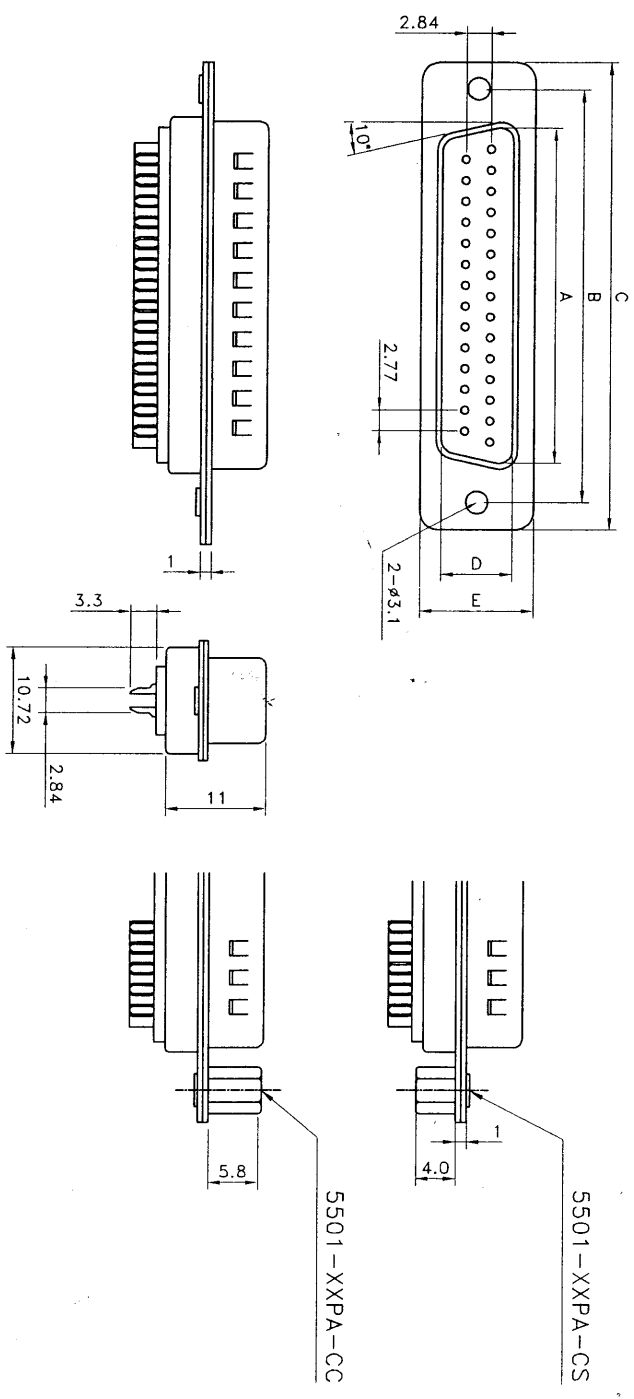
1 2 3 4

POSITIONS	A	B	C±0.5	D	E
9	16.92	24.99	30.81	8.38	12.50
15	25.25	33.32	39.14	8.38	12.50
19	30.60	38.86	44.80	8.38	12.50
23	35.90	44.30	50.30	8.38	12.50
25	38.96	47.04	53.04	8.38	12.50
37	55.42	63.50	69.32	8.38	12.50
50	52.81	61.11	66.93	11.07	15.37

HOW TO ORDER  
5501-XXPA-XX-XX



SPECIFICATIONS:  
CONTACT RESISTANCE: 30MΩ MAX. AT DC 100mA  
INSULATOR RESISTANCE: 100Ω/MIN. AT DC 500V  
CURRENT RATING: 3 AMP  
DIELECTRIC WITHSTANDING:  
VOLTAGE: AC 1000V FOR 1 MINUTE  
OPERATING TEMPERATURE: -55°C~+105°C  
CONTACT: BRASS  
HOUSING: PBT & 3% GLASS FIBER (UL 94V-0)  
UL FILE NO: E144392



DRAWN: Jerry Chen		CHECKED: Peter Huang		GENERAL TOLERANCE: ±0.2		DESCRIPTION: D-SUB SOLDER MALE		SIZE: A4
E		D		UNIT: MM		PART NO: 5501-XXPA-XX-XX		D
C		B		SCALE: 1 / 1		REV		
A		DATE: 10-06-2000		SHEET: 1 / 1		FILE		
		BY: Jerry Chen		PROJECTION:				

**NELTRON INDUSTRIAL CO., LTD**