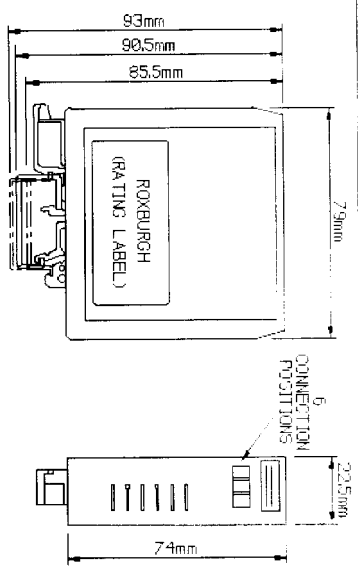


552-64)

552-616 to 641.



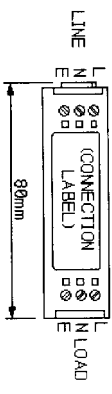
MECHANICAL SPECIFICATION



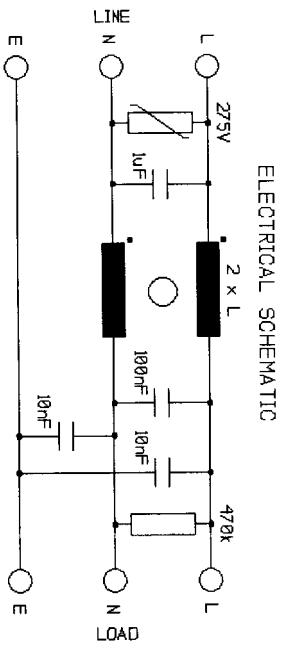
ALL DIMENSIONS MILLIMETRES

ELECTRICAL SPECIFICATION

RATED VOLTAGE 250V AC
 LINE FREQUENCY DC TO 440Hz
 TEMPERATURE RANGE -25 TO +85DegC
 TEST VOLTAGE 20kV DC
 MOUNTING EN 50 022 (TOP HAT) & EN 50 035 (G PROFILE)
 SCREW TERMINALS 2.5sqmm (12 AWG)



ELECTRICAL SCHEMATIC



PRODUCT RANGE

TYPE	CURRENT (Amps) @ 40°C	INDUCTANCE (mH)	RESISTANCE (R) PER WINDING
DRF01	1.0	18	640
DRF03	3.0	3.2	7.1
DRF06	6.0	1.4	19
DRF08	8.0	1.5	15
DRF10	10.0	0.85	12

ROXBURGH

Roxburgh Electronics Ltd
 Roxburgh House
 Foxhills Industrial Park
 Scunthorpe
 South Humberside DN15 8QJ
 Tel: 0724 281770
 Fax: 0724 270230
 Telex: 52405

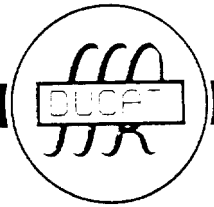
Title

GENERAL SPECIFICATION
DIN RAIL MOUNTED FILTER

Drg No. DRF-GS
 pages 1

ISSUE	QTY	DATE	DRAWN	APPROVED
1	--	3/9/93	AT	
2	384	28/6/94	SW	
3	669	25/3/96	SW	

552-628



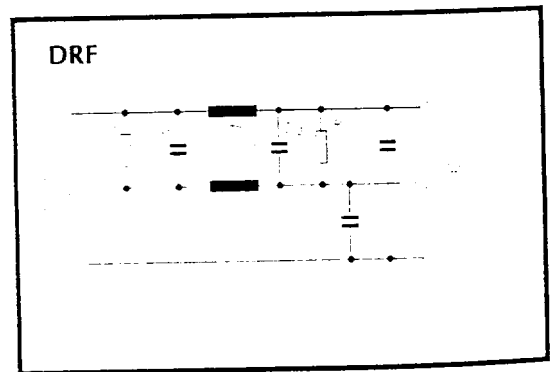
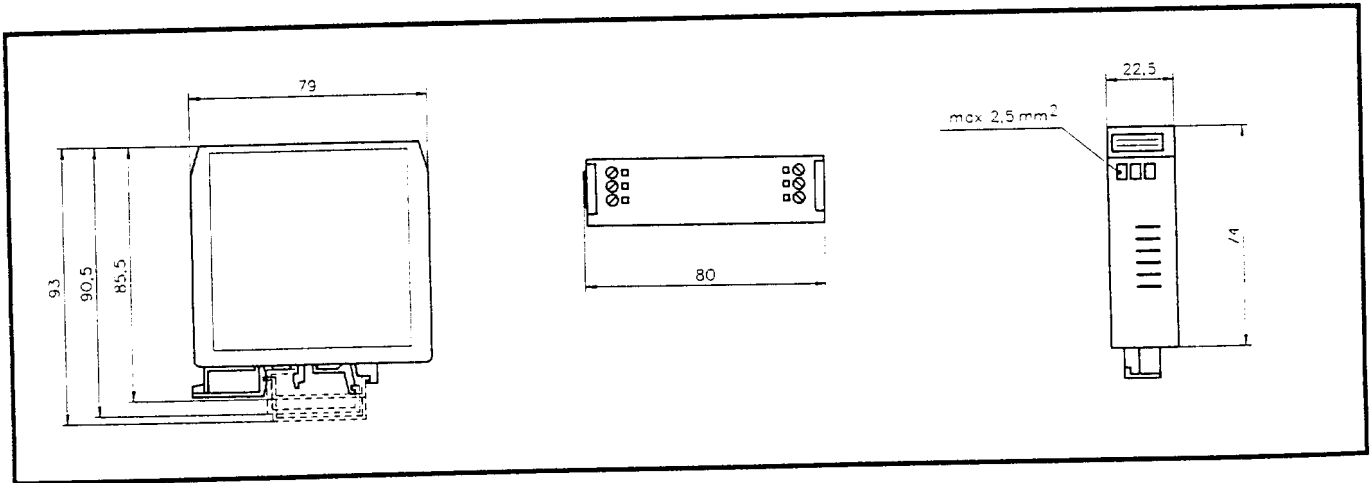
DRF

Railmounted filters for industrial application

DRF is a serie of DIN rail mounted filters. The DRF range is suitable for both "Top Hat" and "G-type" rails. The filtering performance has been optimized to provide effective filtering in the frequency range from 150 kHz to 30 MHz, with a maximum temperature rise of 30 °C at full load. These filters can be used for all AC and DC applications up to line voltage and frequency and also include voltage spike protection across the line.

Electrical specifications

Operating voltage	250 V _{AC} max. 400 Hz
Leakage current	See technical data
Rated current	See technical data
Test voltage (100% test)	P,N-E 2500 V _{AC} 50Hz, 2s
Temperature range	-25...+85 °C



Technical data

Type	Rated current [A]	Max leakage current [mA]	Terminals	L [mH]	CX1 [μF]	CX2 [μF]	CY [pF]	R [MΩ]	Weight [G]
DRF01	1	2x0.95	S	2x18	1.0	0.1	2x10000	0.47	110
DRF02	2	2x0.95	S	2x3.2	1.0	0.1	2x10000	0.47	110
DRF03	3	2x0.95	S	2x1.4	1.0	0.1	2x10000	0.47	110

Connectors: S = Screw
Terminals for 2,5mm² (AWG 12), wire maximum.