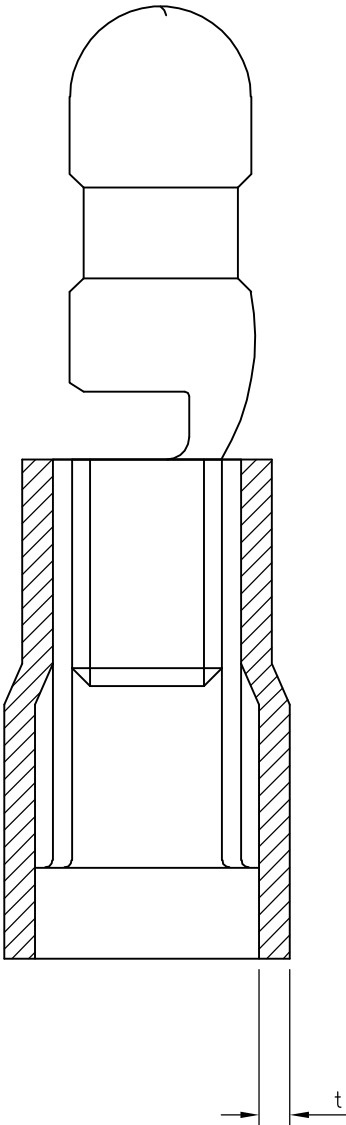
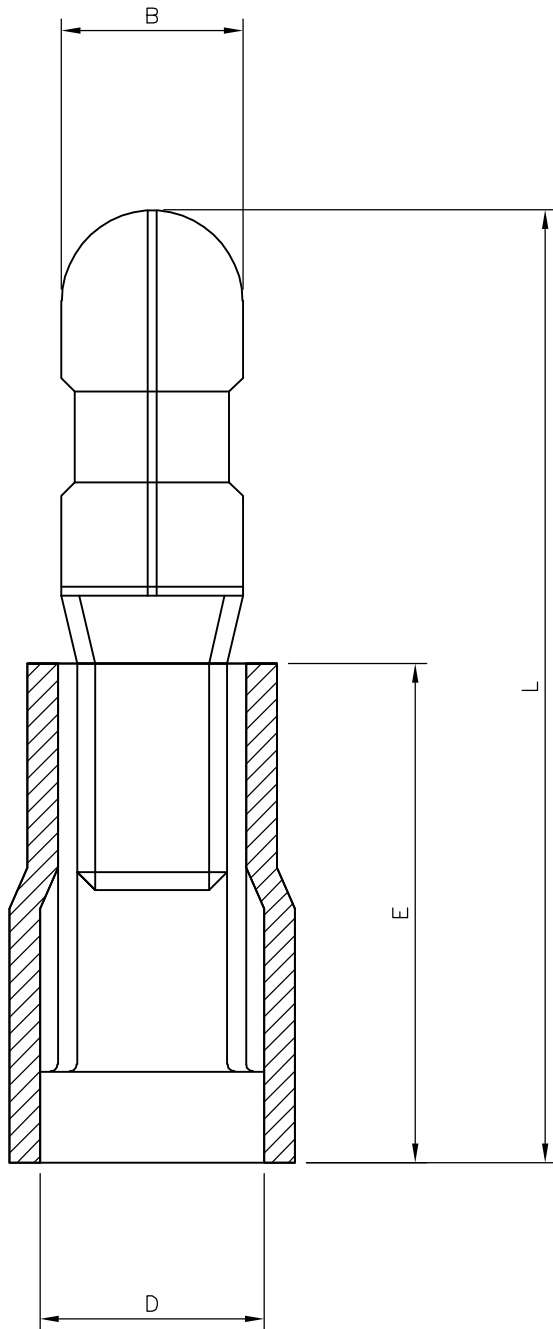
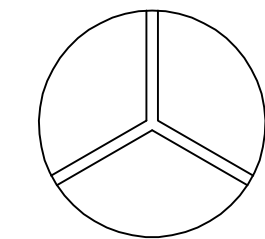


LOC	DIST	REVISIONS				
E	B	P	LTR	DESCRIPTION	DATE	APVD
			A	FIRST ISSUE	23AUG05	KR FWK



- NOTES:
- FOR TECHNICAL DATA REFER TO YOUR LOCAL TYCO ELECTRONICS SALES OFFICE.
 - ALL DIMENSIONS ARE NOMINAL FOR REFERENCE ONLY UNLESS OTHERWISE STATED.
 - FOR PACKAGING DETAILS SEE SHEET 2.
 - MATERIAL: BODY – BRASS
SLEEVE – PVC (K65), 94V-0
 - APPLICATION SPEC 114-13196

NOTE: TERMINAL COPPER THICKNESS: t

2-1838231-0	0.5mmsq – 1.5mmsq	4x11mm STANDARD ENTRY	RED MALE BULLET TERMINAL	3000	1000	4.00	21.50	4.10	10.50	0.40	0.80	0.5mmsq – 1.5mmsq	4.0 X 11.0	RED MALE BULLET TERMINAL	2-1838231-0
1-1838231-0	22-16(AWG)		(INSULATED)	3500	100							22-16(AWG)		(INSULATED)	1-1838231-0
STOCK NUMBER	PACKING LABEL DESCRIPTION LINE 3	PACKING LABEL DESCRIPTION LINE 2	PACKING LABEL DESCRIPTION LINE 1	INNER CARTON QTY	QTY	B (±0.30)	L (±1.50)	D (±0.50)	E (±0.50)	t (±0.10)	t1 (±0.20)	WIRE SIZE (mmsq) & (AWG)	SIZE (mm)	DESCRIPTION	PART No
						DIMENSIONS									

THIS DRAWING IS A CONTROLLED DOCUMENT.

DIMENSIONS: mm

MATERIAL -

TOLERANCES UNLESS OTHERWISE SPECIFIED:

0 PLC ± 0.5
1 PLC ± 0.2
2 PLC ± 0.1
3 PLC ± 0.015
4 PLC ± -
ANGLES ± -
FINISH -

DWN K.Raghunandan 23AUG05
CHK S. Parlow 03/04/07
APVD F. Wheeler-King 03/04/07
PRODUCT SPEC -
APPLICATION SPEC -
WEIGHT -

tyco Electronics

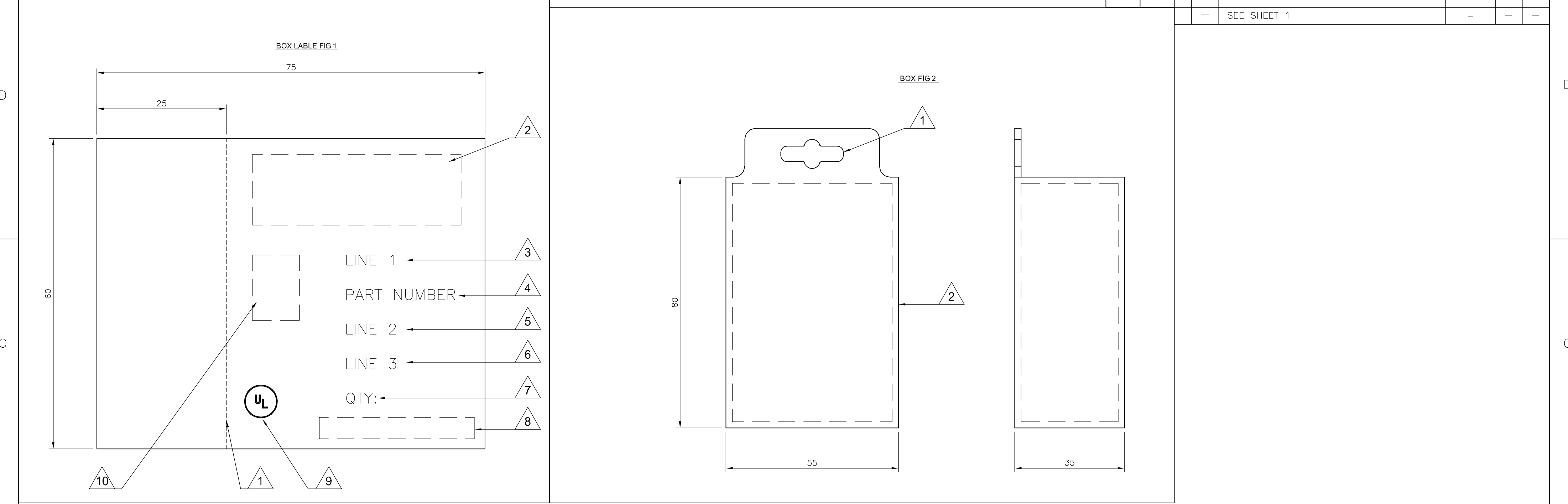
Tyco Electronics Corporation
Bideford, UK, EX39 4HE

NAME EURO-CRIMP INSULATED RED MALE BULLET TERMINAL
0.5mmsq – 1.5mmsq / 22-16 AWG RANGE

SIZE A2 CAGE CODE 00779 DRAWING NO C=1838231 RESTRICTED TO -

CUSTOMER DRAWING SCALE NTS SHEET 1 OF 2 REV A

AMP 1471-9 REV 31MAR2000



- LABEL NOTES:

1. PERFORATED LINE:

DOTTED LINE TO BE ALIGNED WITH OPENING EDGE & FOLDED TO LEFT SIDE OF BOX.

2. LOGO:

USE LATEST REVISION OF TYCO COMPANY LOGO.

3. LINE1:

SEE SHEET 1, USE TEXT FROM COLUMN PACKAGING LABEL DESCRIPTION LINE 1.

4. PART NUMBER:

FOR 1--0 & 2--0 USE TYCO PART NUMBER.
1--0 = 1-1838231-0
2--0 = 2-1838231-0

5. LINE 2:

SEE SHEET 1, USE TEXT FROM COLUMN PACKAGING LABEL DESCRIPTION LINE 2.

6. LINE 3:

SEE SHEET 1, USE TEXT FROM COLUMN PACKAGING LABEL DESCRIPTION LINE 3.

7. QTY:

SEE SHEET 1, USE NUMBER FROM THE COLUMN QTY.

8. EAN BARCODE.

USE LATEST TYCO BARCODE SUPPLIED.
1--0 = TYCO BARCODE
2--0 = TYCO BARCODE

9. UL:

WHERE APPLICABLE USE UL LOGO, SEE SHEET 1.

10. PRODUCT PICTURE:

A PRODUCT PICTURE IS REQUIRED.
- BOX NOTES:

1. EURO SLOT:

TO BE POSITIONED TO CENTRE ON FRONT COVER.

2. BOX HINGE:

FRONT COVER TO BE HINGED ON RIGHT SIDE.

3. SPECIFICATION:

COVER TO BE FREE FROM POSSIBLE WARPING & CAPABLE OF BEING RE-SEALED MIN 100 TIMES.

4. LABEL:

CORRECT CUSTOMER BOX LABEL TO BE POSITIONED ON THE FRONT COVER WITH THE PERFORATED EDGE ON THE LEFT HAND SIDE.
- PACK SPECIFICATION:

1. CLEAR PLASTIC BOX:

PART NUMBER 1--0 TO BE PACKED 100 PARTS PER CLEAR PLASTIC BOX (FIG2) WITH THE CORRECT CUSTOMER LABEL (FIG1), 35 CLEAR PLASTIC BOXES OF THE SAME PART NUMBER ARE TO BE PACKED INTO A SUITABLE INNER CARTON BOX.

2. CLEAR PLASTIC BAG:

PART NUMBER 2--0, USE A SUITABLE CLEAR PLASTIC BAG FOR A 1000 PARTS, POSITION AN APPROPRIATE LABEL AS IN FIG1 BUT WITHOUT THE PERFORATED SIDE, CENTRE OF BAG. 3 BAGS ARE THEN TO BE PACKED INTO A SUITABLE INNER CARTON BOX.

3. INNER CARTON LABEL:

LABEL AS PER CLEAR PLASTIC BAG NOTE 2 BUT WITH INNER CARTON QTY 3000 TO BE POSITIONED ON THE SIDE OF THE BOX FOR VIEWING WHEN STORED.