

CUSTOMER: S068
PART NUMBER: T3718ST



APPROVAL SHEET

OF

SWITCHING ADAPTER

MODEL NO.

DSA-0421S-24 2 42

ORDER NO: YS3-00073

承認書确认后請簽回一份

CUSTOMER APPROVED SIGNATURE			

DEE VAN ENTERPRISE CO., LTD (Head-Quarter)

NO. 5, PAO-KAO RD, HSIN-TIEN, TAIPEI COUNTY, TAIWAN, R.O.C
TEL: +886-2-2917-7002 (12 LINES), FAX: +886-2-2915-4370, +886-2-2918-7244

DEE VAN ELECTRONICS (SHEN ZHEN) CO., LTD (Factory)

5 th Industrial District, Gong Ming Town, Baoan County, Shen Zhen, Guang Dong, CHINA
TEL: +86-755-2773-6530 ~ 7, FAX: +86-755-2773-6538 ~ 9

CONTENT OF APPROVAL SHEET

0. REVISION CONTROL LIST -----	3
1. SPECIFICATION -----	4-7
0. REVISION CHANGE DESCRIPTION -----	4
1. GENERAL DESCRIPTION -----	4
2. INPUT REQUIREMENT -----	4
3. OUTPUT REQUIREMENT -----	5
4. MECHANICAL REQUIREMENT -----	5
5. ENVIRONMENTAL REQUIREMENT-----	6
6. SAFETY REQUIREMENT -----	6
7. RELIABILITY -----	7
2. RATING LABEL DRAWING -----	8
3. DC OUTPUT CORD DRAWING -----	9
4. PRODUCT OUTLINE DRAWING -----	10
5. PACKING DRAWING -----	11

APPROVAL BY	SAFETY	DIRECTOR	ENGINEER	PREPARED
周軍 2005/12/08	/	鄧俊高 2005/12/08	姜海濤 2005/12/08	葛米芝 2005/12/06

0. REVISION CONTROL LIST

DATE	REVISION CONTROL ITEMS					
	CONTENT OF APPROVAL SHEET	SPECIFICATION	RATING LABEL DRAWING	DC OUTPUT CORD DRAWING	PRODUCT OUTLINE DRAWING	PACKING DRAWING
2005,12, 06	A	A	A	A	A	A

REVISION CHANGE DESCRIPTION

ITEM	REV	DESCRIPTION

1. SPECIFICATION

-- 1 / 4

0. REVISION CHANGE DESCRIPTION

Revision	Description	Date
A	Initial release	2005,12,06

1. GENERAL DESCRIPTION

This specification defines the input, output, performance characteristics, environment, noise and safety requirements for a 42 watts switching type power adapter. The adapter input/output are full range AC input and +24.0V DC with 42 watts maximum output.

2. INPUT REQUIREMENT

2-1 AC INPUT VOLTAGE

MINIMUM	NOMINAL	MAXIMUM
90 VAC	100 – 240 VAC	264 VAC

2-2 AC INPUT FREQUENCY

MINIMUM	NOMINAL	MAXIMUM
47 Hz	50 / 60 Hz	63 Hz

2-3 AC INPUT CURRENT

115 VAC INPUT	1.0 A maximum
230 VAC INPUT	0.6 A maximum

2-4 AC INRUSH CURRENT

AT FULL LOAD, 25 DEGREE C, COLD START

115 VAC, 60Hz INPUT	No damage shall be occurred and the input fuse shall not be blown up.
230 VAC, 50Hz INPUT	

2-5 PRIMARY CURRENT PROTECTION

An adequate internal fuse on the AC input line is provided.

2-6 CONFIGURATION

2 Conductor, < Live, Neutral >

2-7 POWER CONSUMPTION ON POWER SAVING MODE

LOAD	INPUT CONDITION	INPUT POWER REQUIREMENT
0 A	110 VAC 60 Hz	0.50 W maximum
	230 VAC 50 Hz	0.75 W maximum

1. SPECIFICATION

-- 2 / 4

3. OUTPUT REQUIREMENT

3-1	DC OUTPUT VOLTAGE	+ 24.0 V
3-2	MINIMUM LOAD CURRENT	0 A
3-3	MAXIMUM LOAD CURRENT	1.75A
3-4	MAXIMUM OUTPUT POWER	42W
3-5	TOTAL OUTPUT REGULATION	+/- 5 %
3-6	LINE REGULATION	+/- 2 %
		At nominal input voltage and full load
3-7	RIPPLE AND NOISE	240 mVp-p maximum
		At 20 MHz, and output parallel with 0.1uF & 10uF capacitors to ground Temperature at 25 °C, and 115V/230V AC input voltage
3-8	EFFICIENCY	80% minimum
		At nominal input voltage and full load
3-9	DROP-OUT	With half cycle input voltage drop-out, the unit shall operate within the prescribed voltages with a drop-out pulse repetition rate of 500mS. Conditions: Full load and nominal input AC voltage Limits: Meet the regulation requirement
3-10	PROTECTION	
	OVER-CURRENT PROTECTION	3.5 A maximum with auto-recovery function
	OVER-VOLTAGE PROTECTION	37 VDC maximum with zener clamp
	SHORT-CIRCUIT PROTECTION	The adapter shall not be damaged by short the DC output to Ground.
	OPEN CIRCUIT PROTECTION	When primary power is applied with no load on any output level, no components damaged or hazardous conditions should be occurred.
3-11	REMARK	Unless otherwise specification output load Must be set at CC mode.

4. MECHANICAL REQUIREMENT

4-1 DIMENSION

115.2 (L) * 58.5 (W) * 33.8 (H) mm maximum

1. SPECIFICATION

-- 3 / 4

4-2 WEIGHT

290 g maximum

4-3 INPUT PLUG TYPE

2-PIN

4-4 OUTPUT CORD

WIRE: 18AWG/2C,1800 mm

PLUG: JACK PLUG 5.5*2.1*12mm

5. ENVIRONMENTAL REQUIREMENT

5-1 COOLING

Cooling shall be with natural convection cooling

5-2 OPERATING TEMPERATURE

0 °C TO 40 °C

5-3 STORAGE TEMPERATURE

-20 °C TO +60 °C

5-4 OPERATING HUMIDITY

20 ~ 85 % RH. NON-CONDENSING

5-5 STORAGE HUMIDITY

5 ~ 95 % RH. NON-CONDENSING

6. SAFETY REQUIREMENT

6-1 DIELECTRIC WITHSTANDING VOLTAGE TEST (HI-POT TEST)

Primary To Secondary: 3000VAC 10mA 1 minute or 4242VDC 10mA 1 minute.

6-2 INSULATION RESISTANCE

Insulation resistance shall be more than 100M Ω at 500Vdc between Primary Live, Neutral line and secondary.

6-3 LEAKAGE CURRENT

0.25mA maximum, at nominal AC input voltage and frequency

6-6 COMPLY SAFETY STANDARDS

Designed to meet CE

6-4 EMI STANDARDS

Designed to meet CE

1. SPECIFICATION

-- 4 / 4

7. RELIABILITY

7-1 MEAN TIME BETWEEN FAILURE (MTBF)

The power supply shall be designed and produced to have a mean time between failures (MTBF) of 50000 operating hours at 90% confidence-level while operating under the following conditions:80% maximum load at 25°C, nominal input voltage.

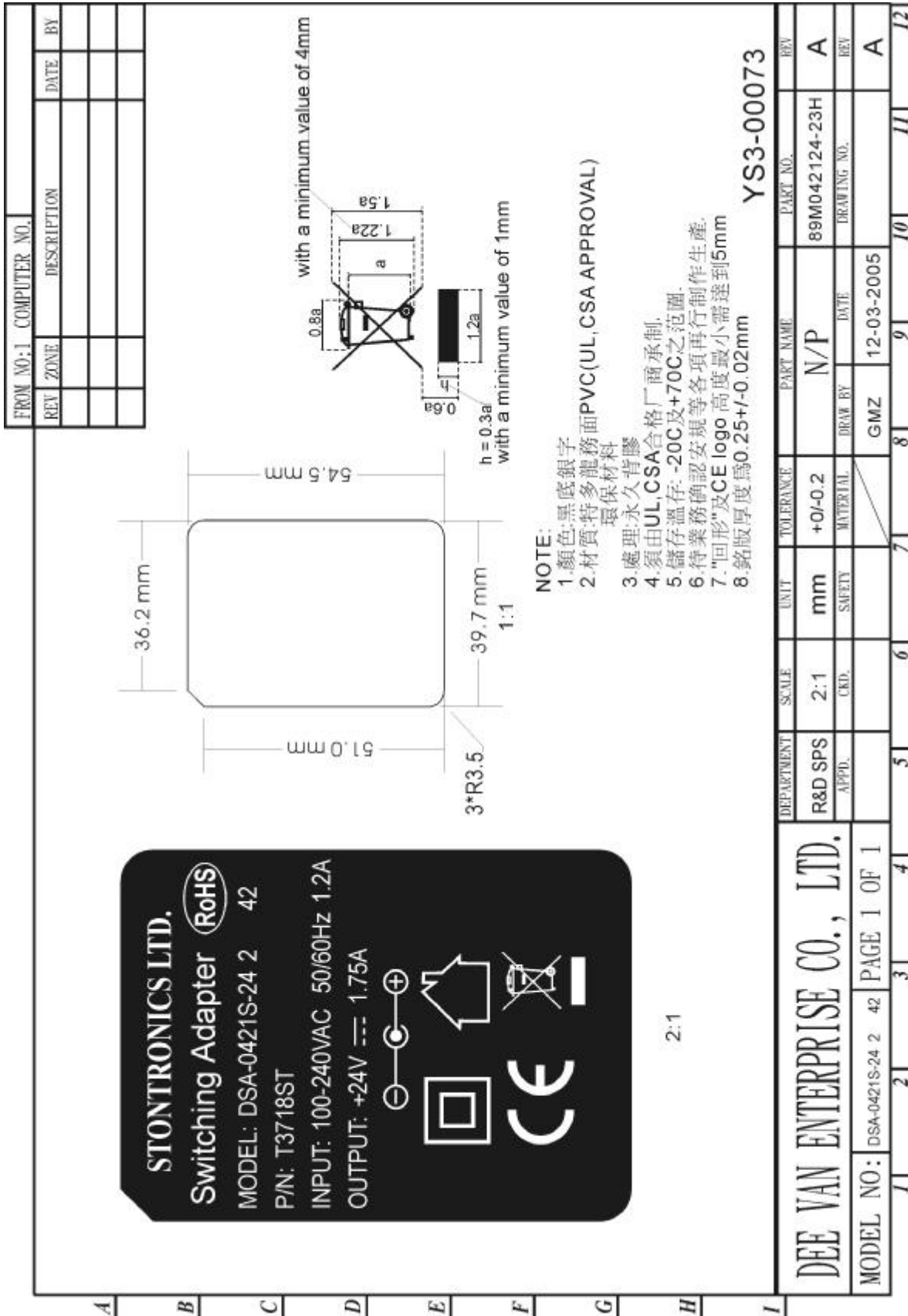
Standard:MIL-HDBK-217F

7-2 BURN-IN TEST

4 hours at 40°C maximum, nominal input voltage, 80% of maximum load.

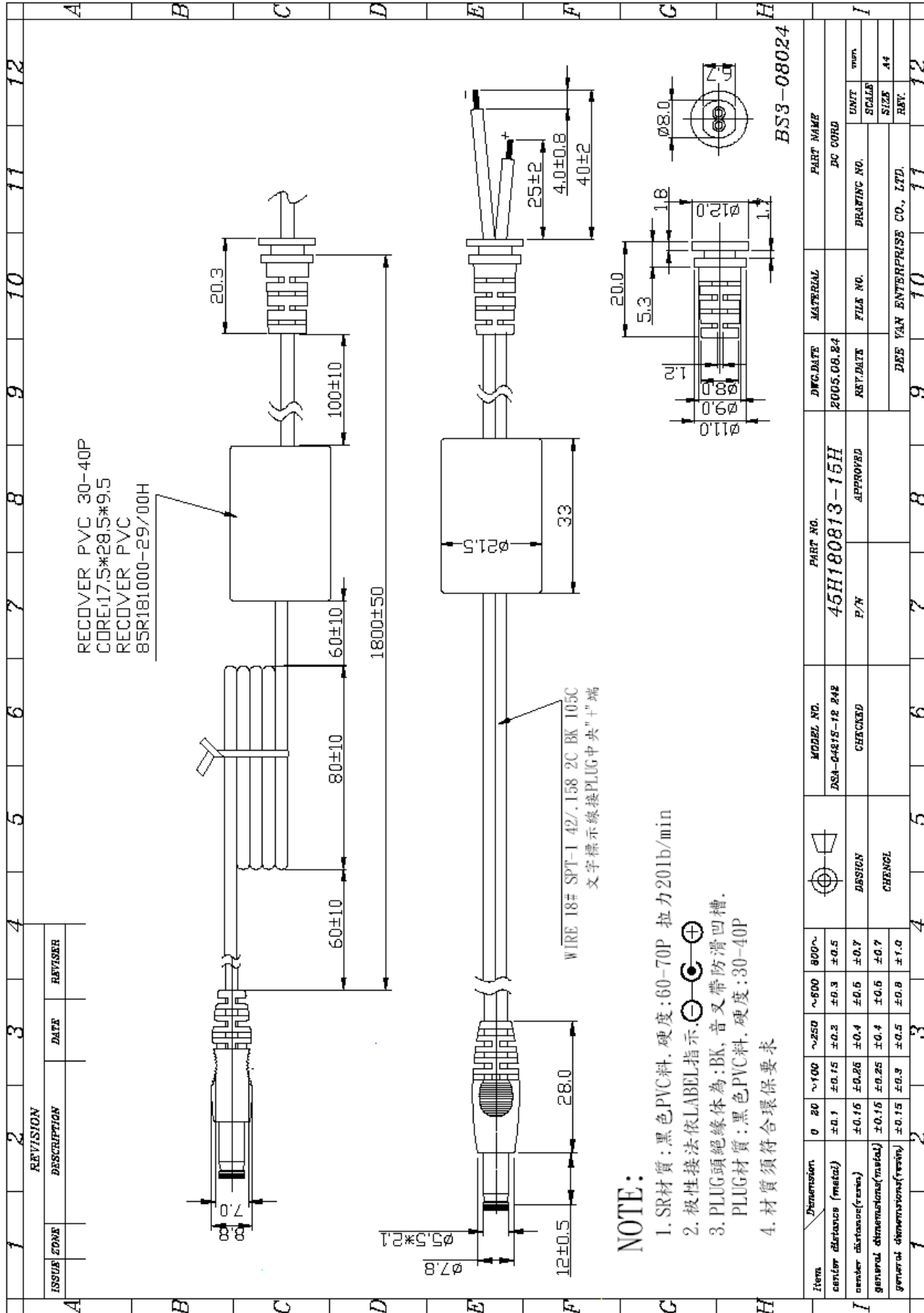
2. RATING LABEL DRAWING

-- 1 / 1



3.DC OUTPUT CORD DRAWING

-- 1 / 1



Item	Dimension	0-20	~100	~250	~500	800~
center distance (metal)	±0.1	±0.15	±0.3	±0.3	±0.5	±0.5
center distance (resin)	±0.15	±0.25	±0.4	±0.5	±0.7	±0.7
general dimensions (metal)	±0.15	±0.3	±0.5	±0.5	±0.8	±1.0
general dimensions (resin)	±0.15	±0.3	±0.5	±0.5	±0.8	±1.0

REV. NO.	DATE	BY	CHK	APP
1	2005.06.24			

ISSUE ZONE	REVISION	DESCRIPTION	DATE	REVISOR

MODEL NO.	CHECKED	P/N	APPROVED	PART NO.	DATE	MATERIAL	PART NAME
DSA-6481S-12 P4E <td> <td> <td> <td>45H180813-15H <td>2005.06.24 <td></td> <td>PC CORD</td> </td></td></td></td></td>	<td> <td> <td>45H180813-15H <td>2005.06.24 <td></td> <td>PC CORD</td> </td></td></td></td>	<td> <td>45H180813-15H <td>2005.06.24 <td></td> <td>PC CORD</td> </td></td></td>	<td>45H180813-15H <td>2005.06.24 <td></td> <td>PC CORD</td> </td></td>	45H180813-15H <td>2005.06.24 <td></td> <td>PC CORD</td> </td>	2005.06.24 <td></td> <td>PC CORD</td>		PC CORD

FILE NO.	DRAWING NO.	UNIT	SCALE	SIZE	REV.
		mm	A4		

DEE VAN ENTERPRISE CO., LTD.	9	10	11	12

