

## FEATURES AND SPECIFICATIONS

### Features and Benefits

- Sizes 2 to 16 circuits
- High voltage
- Rising cage pressure clamp
- 130°C operating rating
- High flammability rating

### Electrical

Voltage: 600V  
Maximum Current: 20 Amp  
Insulation Resistance: >5000 Gigaohms

### Mechanical

Max. Tightening Torque: 8 in. lbs, .90 Nm  
Operating Temperature: 130°C  
Wire Strip Length: 1/4" or 6mm

### Physical

Insulator: Polymide UL94V-0, Black  
Screws: Steel  
Screw Plating: Zinc chromate  
Pressure Clamp: Brass  
Pressure Clamp Plating: Nickel  
Contacts: Copper Alloy  
Contact Plating: Bright Tin Dip  
Wire Range: 12 to 22 AWG, 2.5 to 0.5mm<sup>2</sup>

### Reference Information

UL : File No. E48521  
Guide No. XCFR2  
CSA: File No. 025562

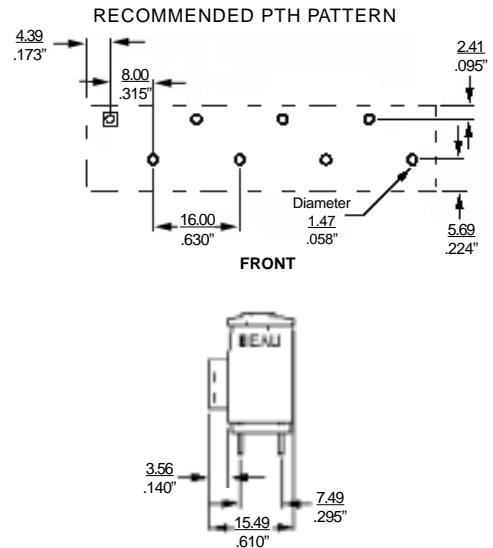
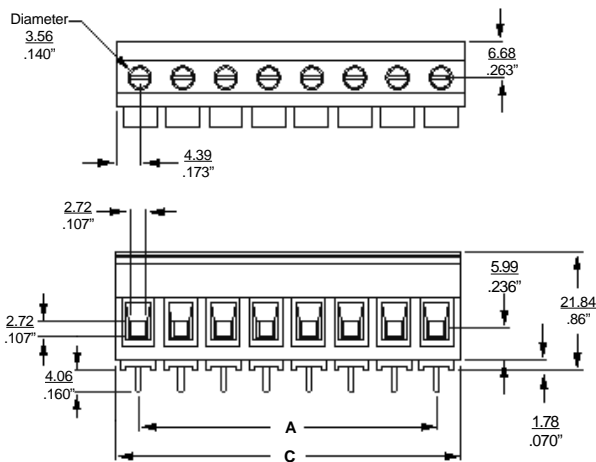


8.0 mm (.315") Pitch  
Beau Eurostyle®  
Fixed Blocks

39950  
High Voltage



## CATALOG DRAWING (FOR REFERENCE ONLY)



## ORDERING INFORMATION AND DIMENSIONS

Part Number *		# of Circuits	A		B	
Order #	Engineering #		in	mm	in	mm
39950-0103	950503	3	.63	16.0	.98	24.9
39950-0104	950504	4	.94	24.0	1.29	32.8
39950-0105	950505	5	1.26	32.0	1.61	40.9
39950-0106	950506	6	1.58	40.0	1.92	48.8
39950-0107	950507	7	1.89	48.0	2.24	56.9
39950-0108	950508	8	2.20	56.0	2.55	64.8
39950-0109	950509	9	2.52	64.0	2.87	72.9
39950-0110	950510	10	2.84	72.0	3.18	80.8
39950-0111	950511	11	3.15	80.0	3.50	88.9
39950-0112	950512	12	3.46	88.0	3.81	96.8
39950-0113	950513	13	3.78	96.0	4.13	104.9
39950-0114	950514	14	4.10	104.0	4.44	112.8
39950-0115	950515	15	4.41	112.0	4.76	120.9
39950-0116	950516	16	4.72	120.0	5.07	128.8

\* Consult factory for sequential numbering and special marking