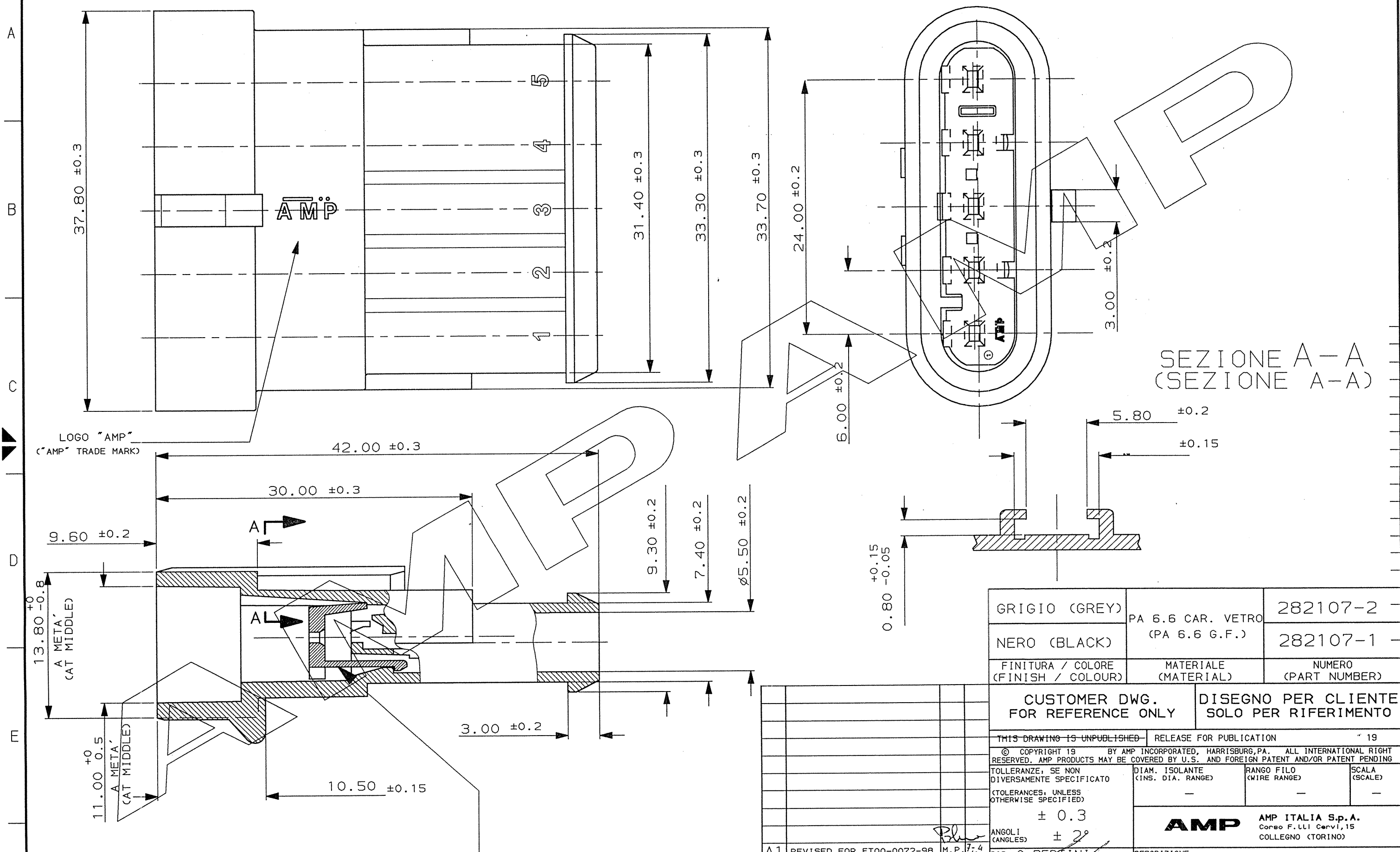


SCALA NON IMPEGNATIVA  
(DO NOT SCALE)  
DIMENSIONI IN mm  
(DIMENSIONS IN mm)

**METRIC**

PROIEZIONE EUROPEA  
(EUROPEAN PROJECTION)



SEZIONE A-A  
(SEZIONE A-A)

LOGO "AMP"  
("AMP" TRADE MARK)

A META'  
(CAT MIDDLE)

A META'  
(CAT MIDDLE)

GRIGIO (GREY)	PA 6.6 CAR. VETRO	282107-2
NERO (BLACK)	(PA 6.6 G.F.)	282107-1
FINITURA / COLORE (FINISH / COLOUR)	MATERIALE (MATERIAL)	NUMERO (PART NUMBER)

CUSTOMER DWG. FOR REFERENCE ONLY  
DISEGNO PER CLIENTE SOLO PER RIFERIMENTO

THIS DRAWING IS UNPUBLISHED - RELEASE FOR PUBLICATION		19
© COPYRIGHT 19 BY AMP INCORPORATED, HARRISBURG, PA. ALL INTERNATIONAL RIGHT RESERVED. AMP PRODUCTS MAY BE COVERED BY U.S. AND FOREIGN PATENT AND/OR PATENT PENDING		
TOLLERANZE, SE NON DIVERSAMENTE SPECIFICATO (TOLERANCES, UNLESS OTHERWISE SPECIFIED)	DIAM. ISOLANTE (INS. DIA. RANGE)	RANGO FILO (WIRE RANGE)
± 0.3	-	-

**AMP** AMP ITALIA S.p.A.  
Corso F.lli Cervi, 15  
COLLEGNO (TORINO)

AGGANCIO SECONDARIO, COLORE ROSSO, PRE-ASSEMBLATO  
(SECONDARY LOCK, RED COLOUR, IN PRE-ASSEMBLED POSITION)

A1	REVISED FOR ET00-0072-98	M.P. 7-4 '98	DIS. C. BERTINI (DR.) 2-90	DESCRIZIONE (DESCRIPTION) 5 POS TAB ASS'Y
A	ADDED NEW POLARIZ.KEY (0146-94)	c.B 30-5 '94		AMP SUPERSEAL 1.5 SERIES CONNECTORS
5	UP-DATED	C B 10 '92	CONT. (CHK)	LOC. SIZE NUMERO (DWG NO)
4	ADDED PN ...-2	C.B 8-92	APP. (APP.)	REV. FOGLIO (SHEET)
REV.	REVISIONI	DIS. DATA	APP. (APP.)	IA-3 C-282107 A111

TRIBUZIONE  
(PRINT DIST.)